



Jõudluskontrolli Keskus
Estonian Animal Recording Centre

Kreutzwaldi 48A
Tartu 50094
Eesti

Tel. 738 7700
Fax 738 7702

Olukord piimakarjades jõudluskontrolli tulemuste põhjal

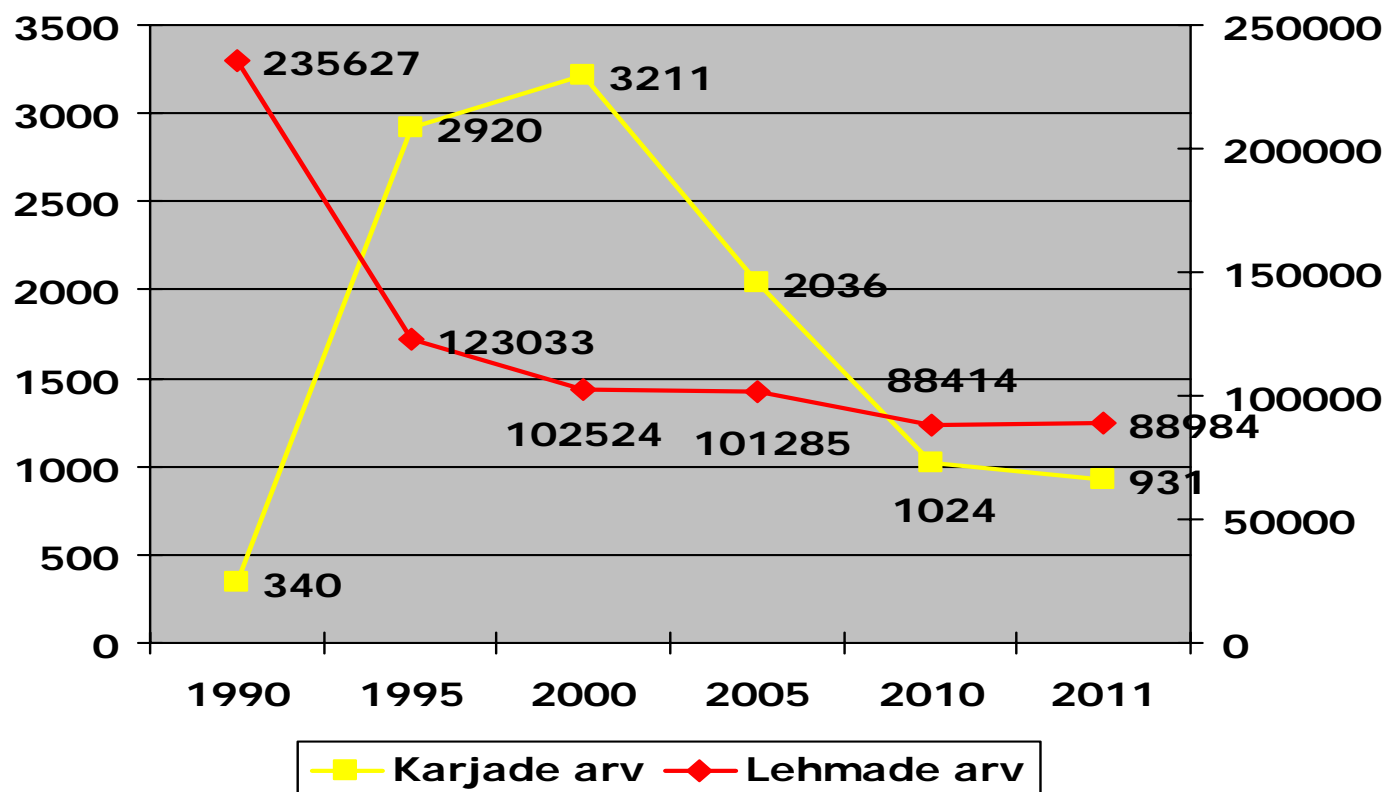
Aire Pentjärv

JKK väliteenistuse osakonna
juhataja

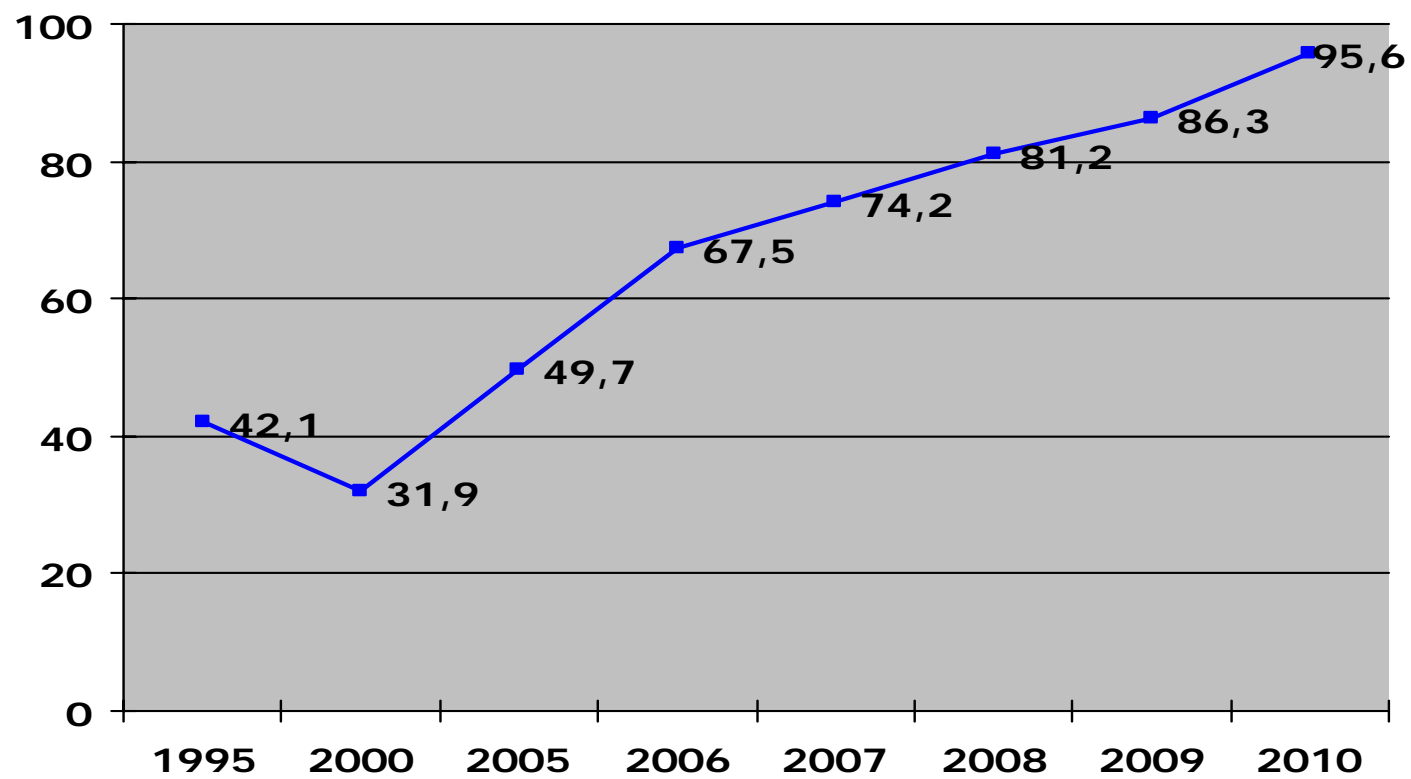


Maaelu Arengu Euroopa
Põllumajandusfond:
Euroopa investeeringud
maapiirkondadesse

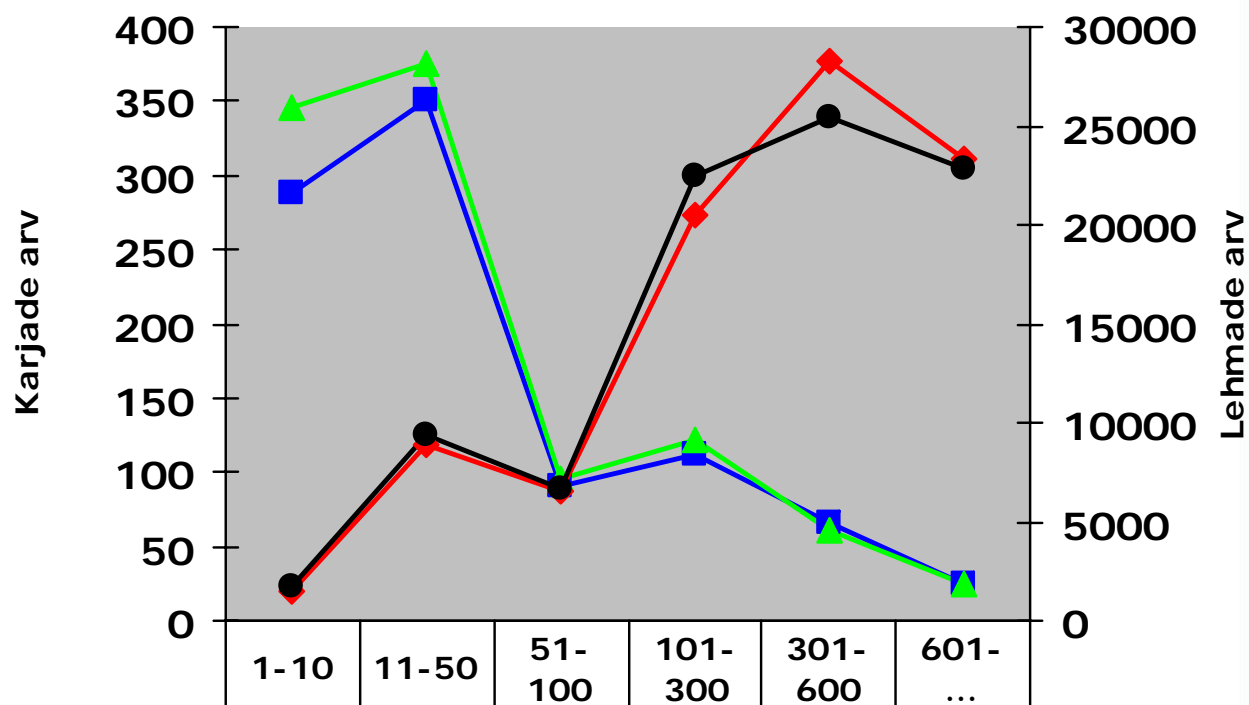
Karjade ja lehmade arv 1. jaanuaril



Lehmade arv karjas

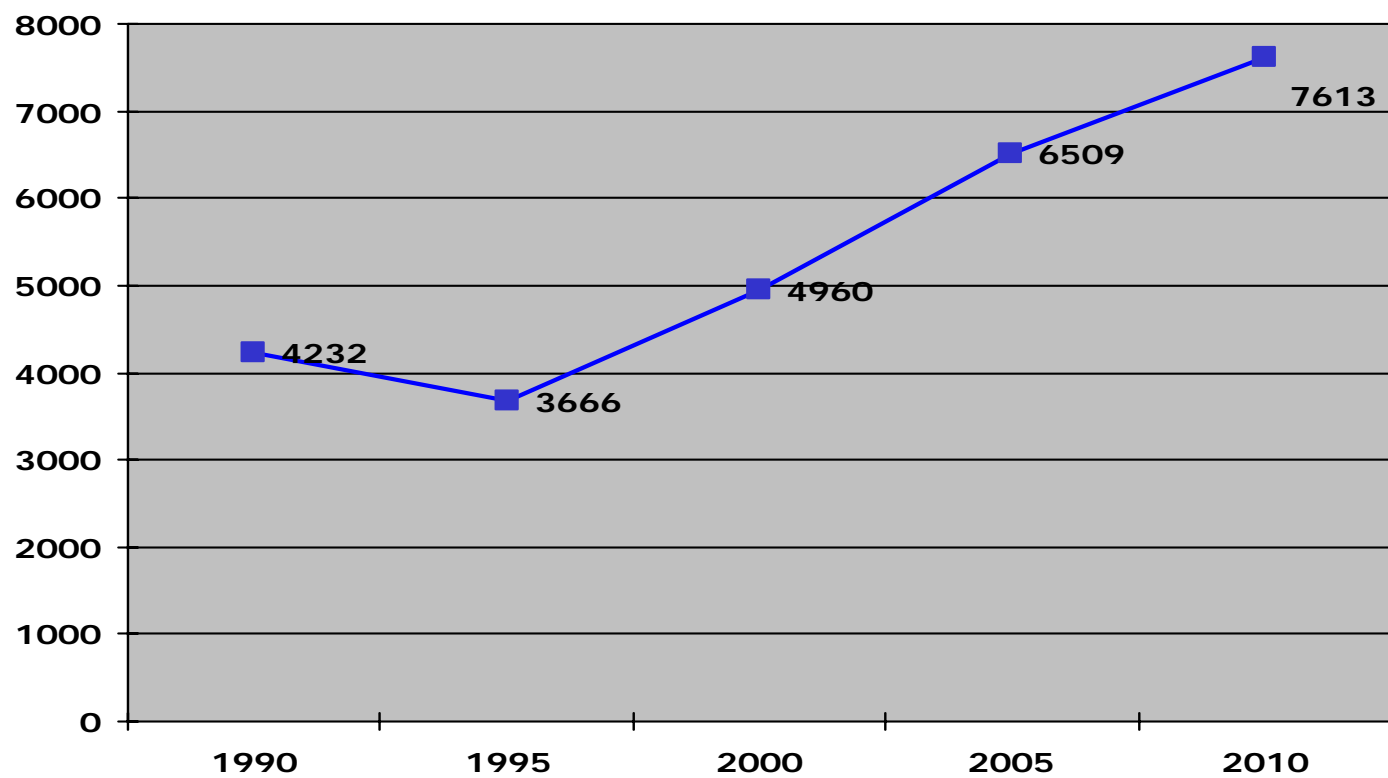


Karjade struktuur

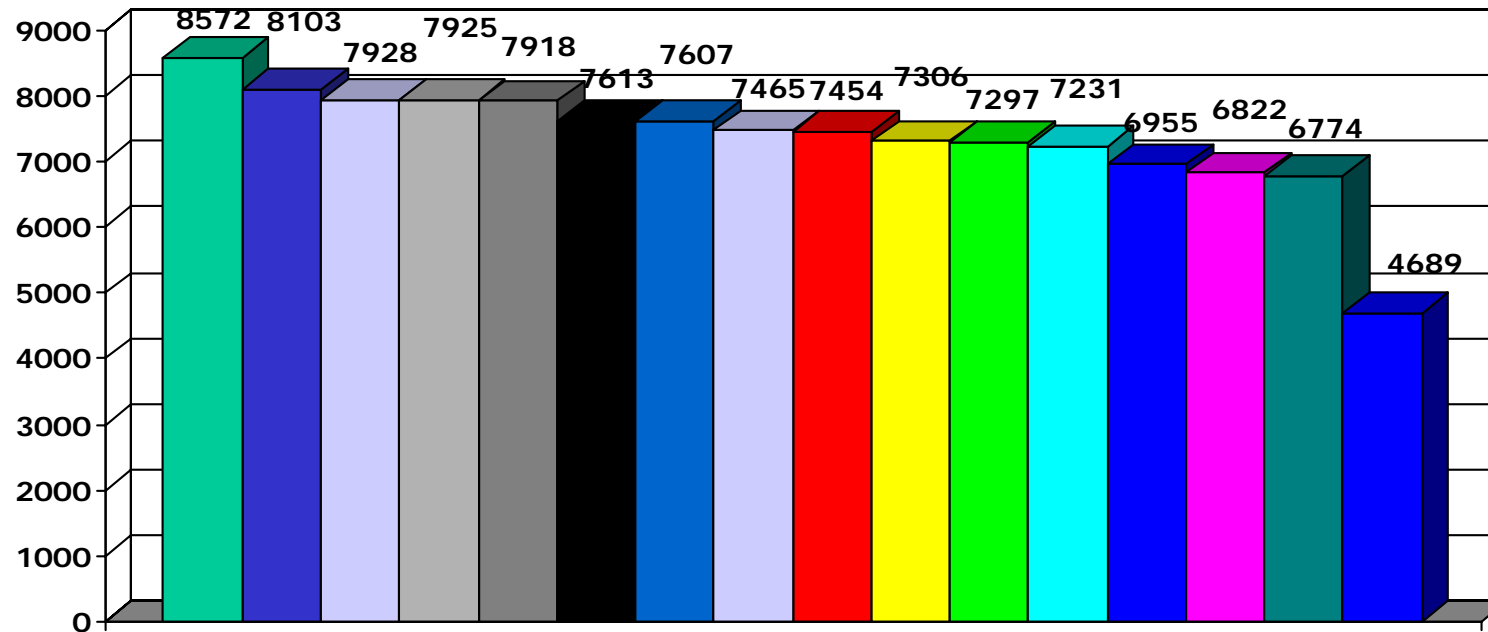


■ Karjade arv 01.01.11	288	350	90	112	66	25
▲ Karjade arv 01.01.10	346	375	95	122	61	25
◆ Lehmade arv 01.01.11	1426	8920	6494	20469	28315	23360
● Lehmade arv 01.01.10	1700	9331	6623	22412	25487	22861

Piimatoodang lehma kohta (kg)

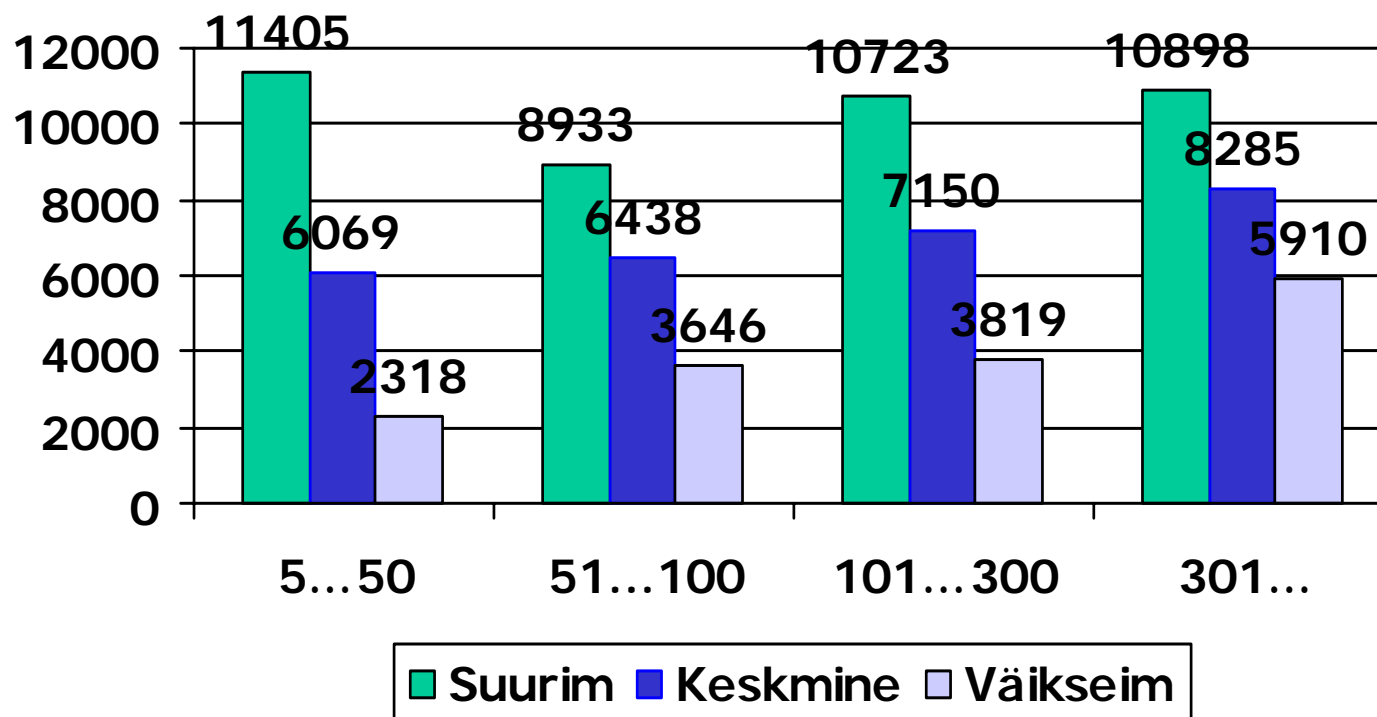


Piimatoodang lehma kohta maakondades 2010. a

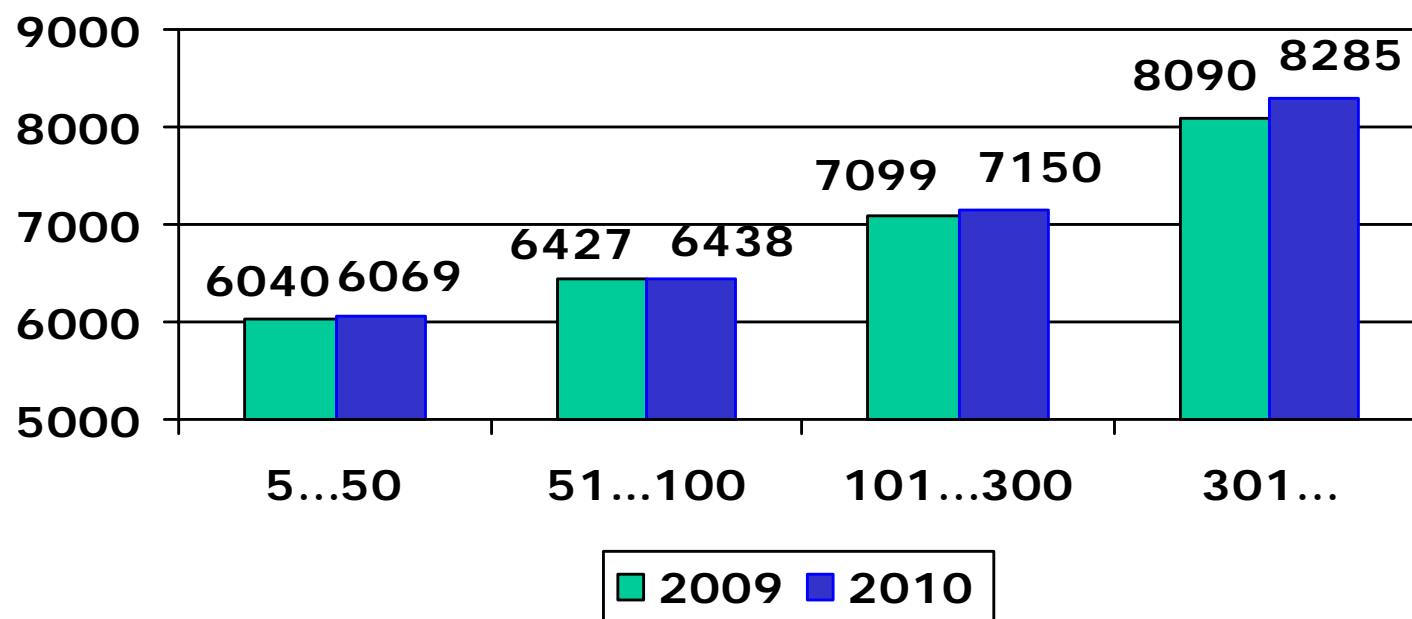


Tartu	Põlva	Lääne-Viru	Rapla	Jõgeva	Eesti
Järva	Pärnu	Võru	Viljandi	Valga	Ida-Viru
Saare	Harju	Lääne	Hiiu		

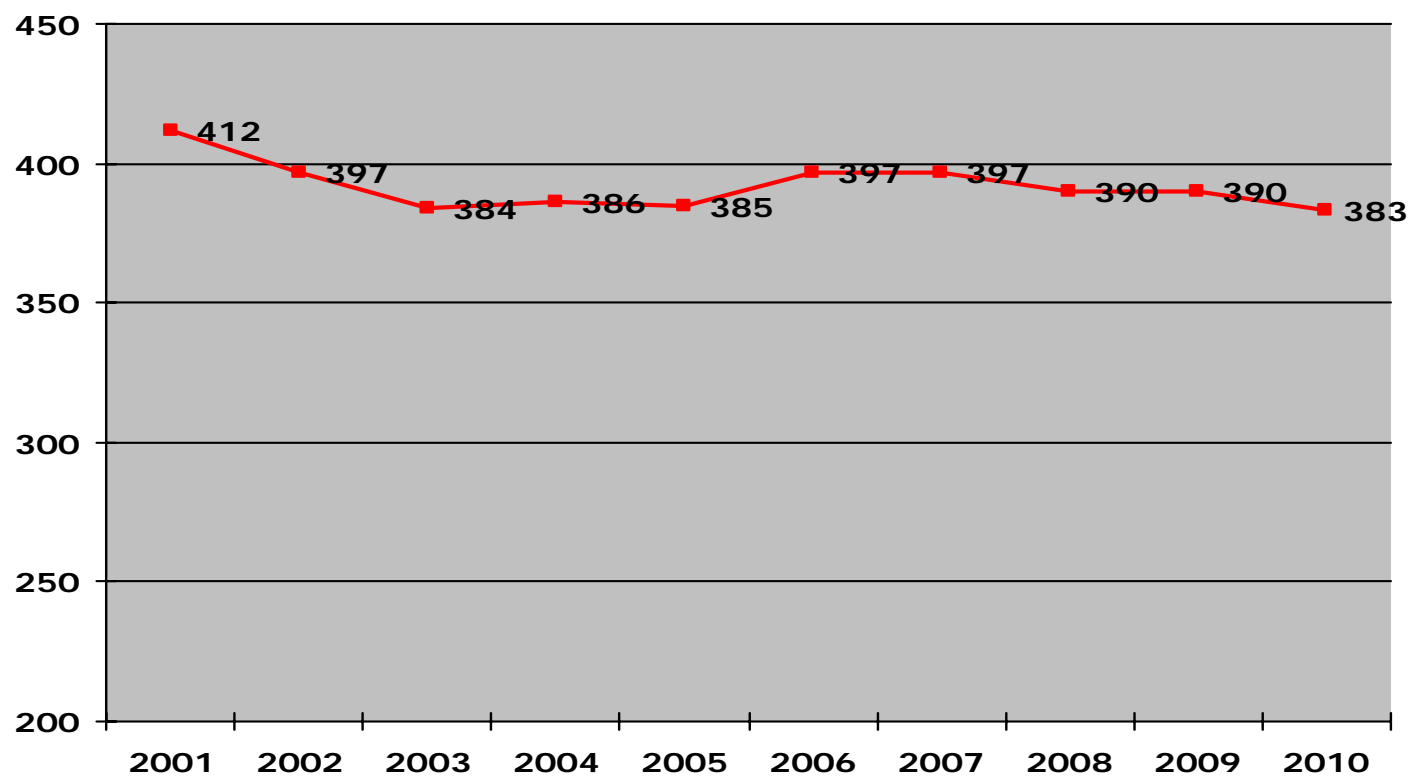
Piimatoodang erineva suurusega karjades



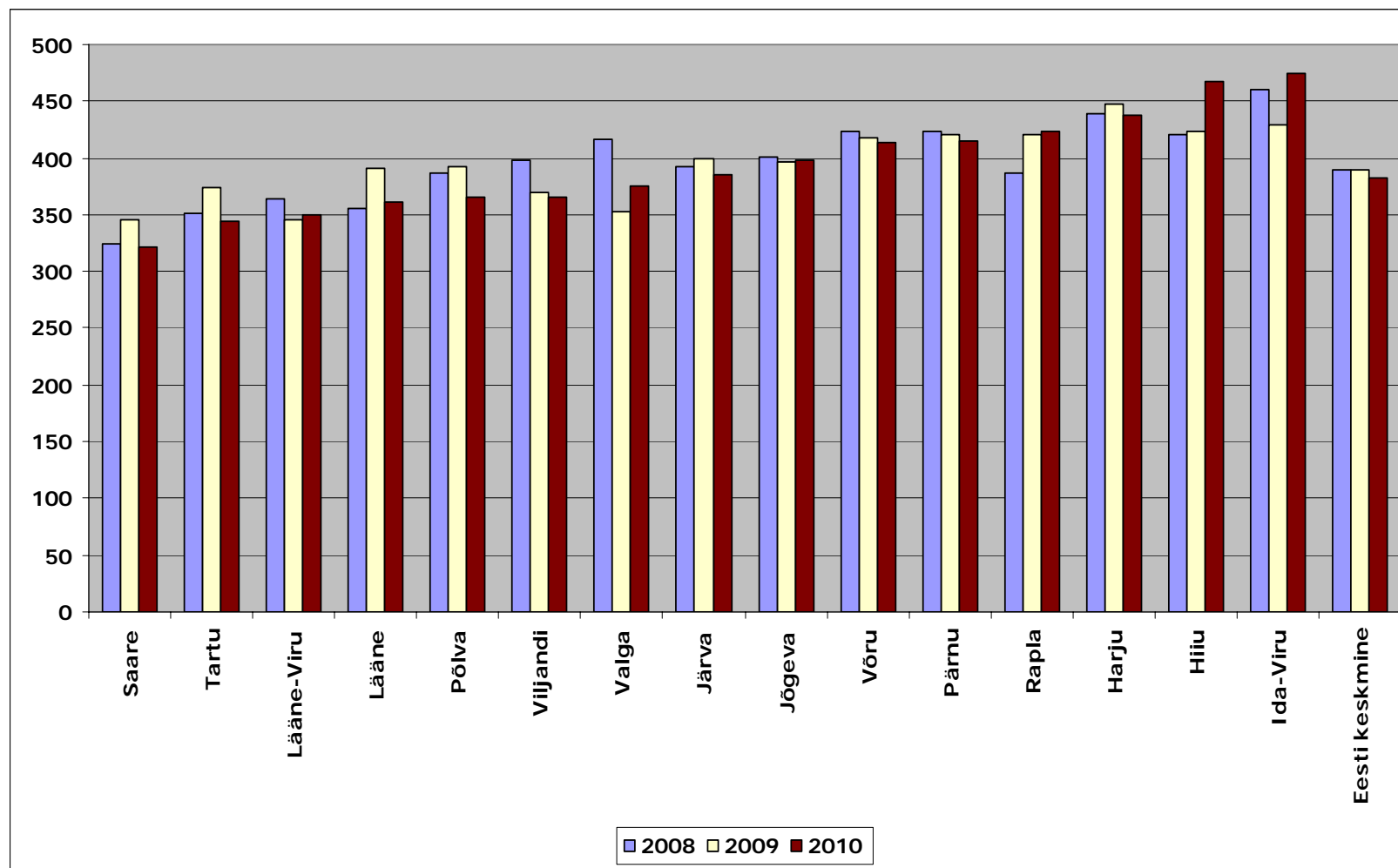
Piimatoodang 2009 ja 2010



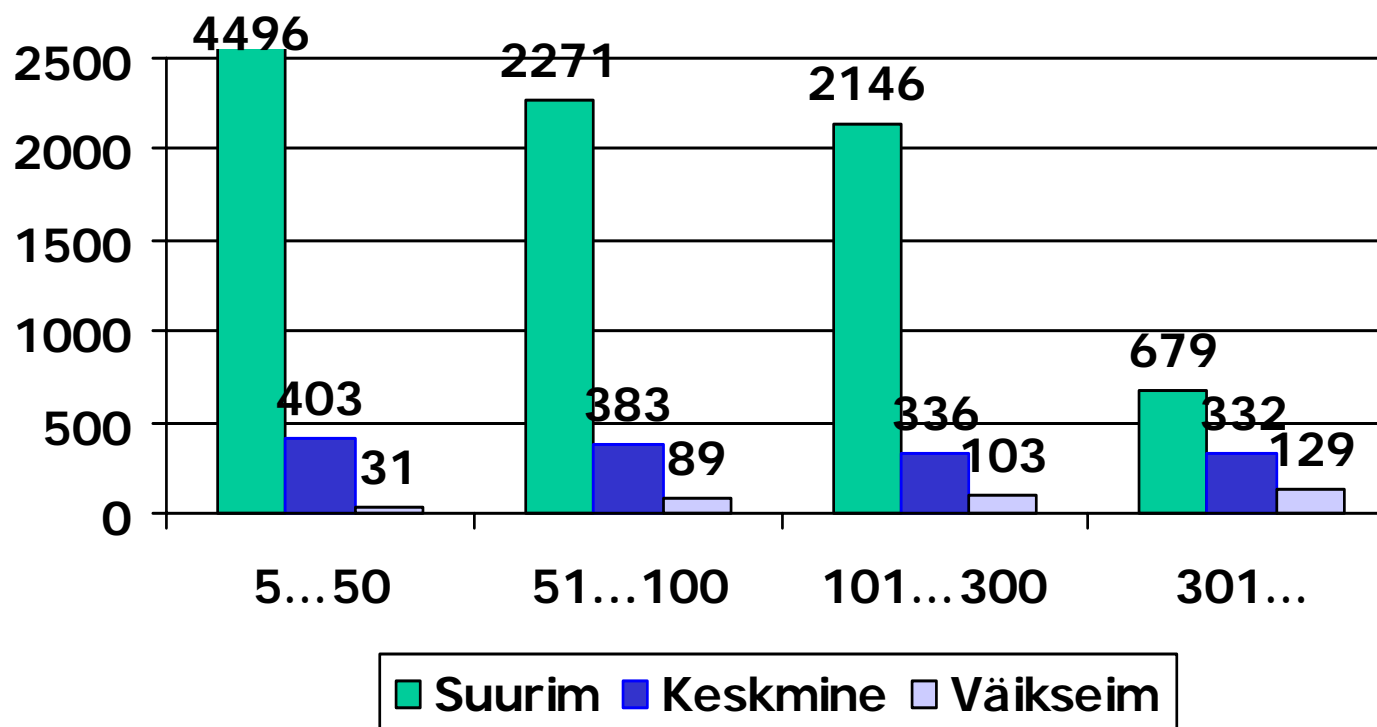
Keskmine SRA piimas (tuh/ml)



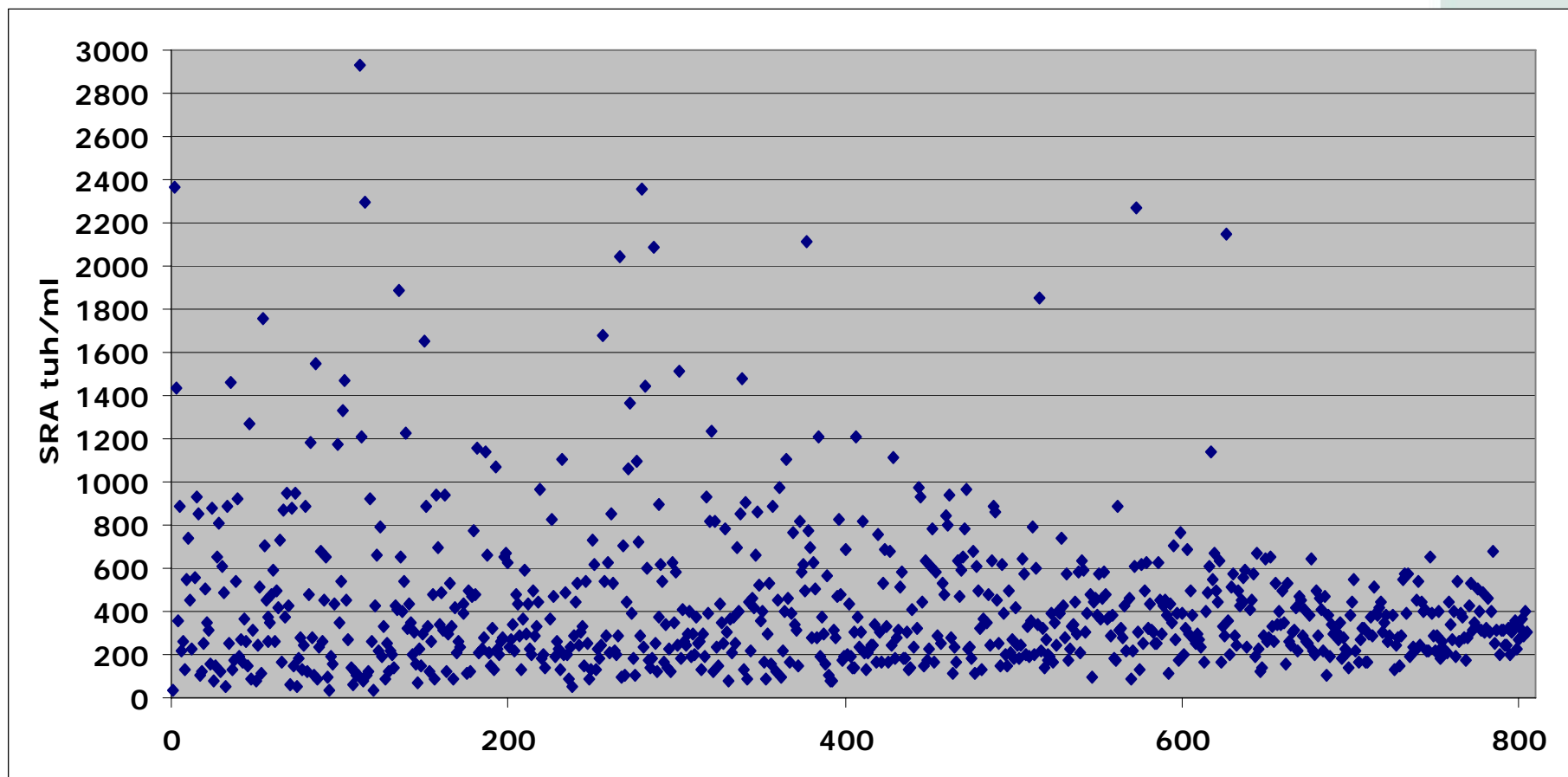
Keskmine SRA maakondade lõikes



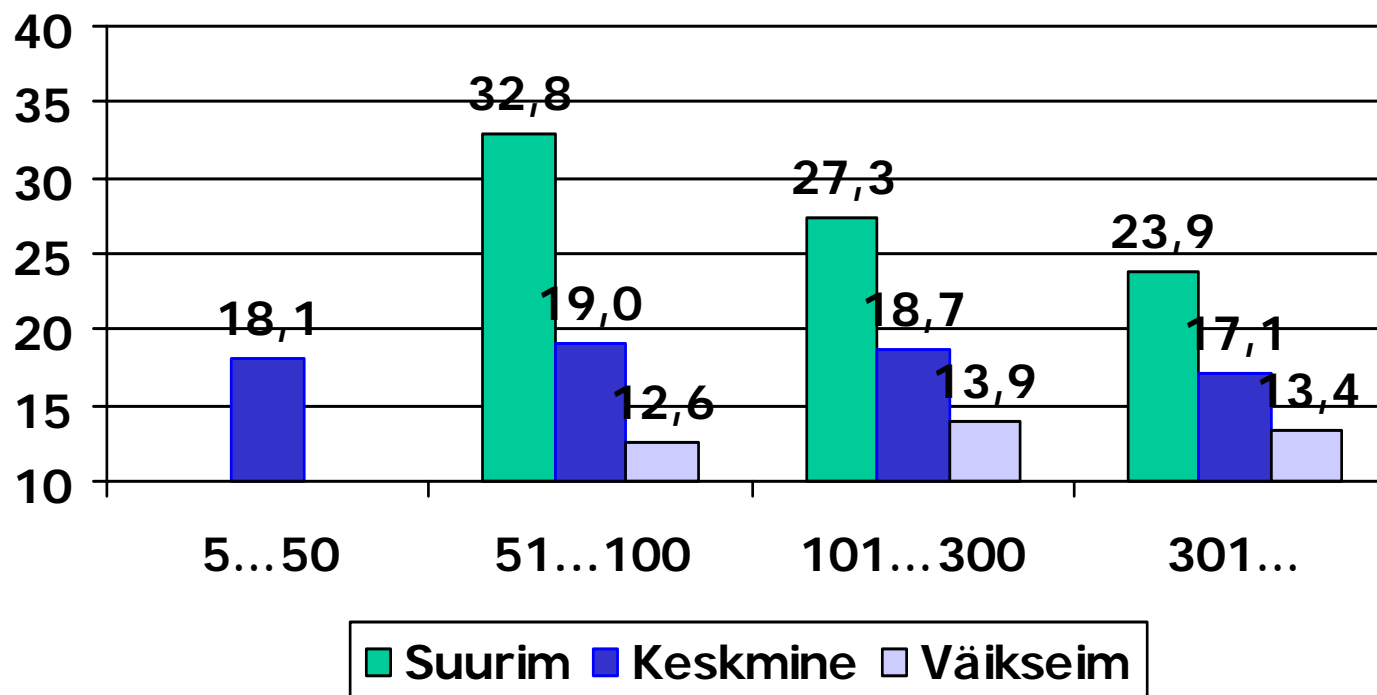
Keskmine SRA (tuh./ml) karjades 2010. a detsembri kontroll-lüpsil



Karjade jaotus SRA järgi 2010. a detsembri kontroll-lüpsil

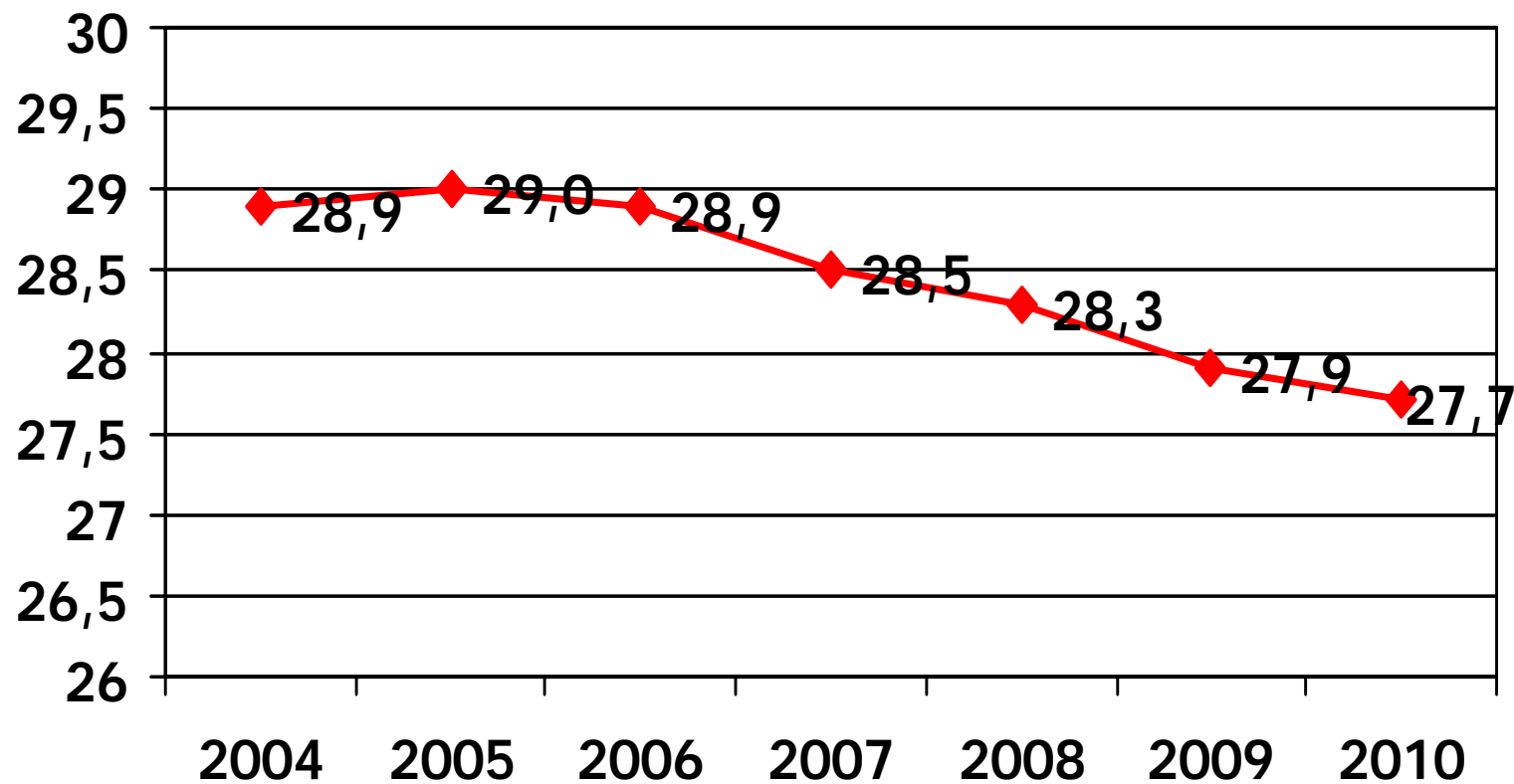


Lehmikute vanus esimesel seemendusel



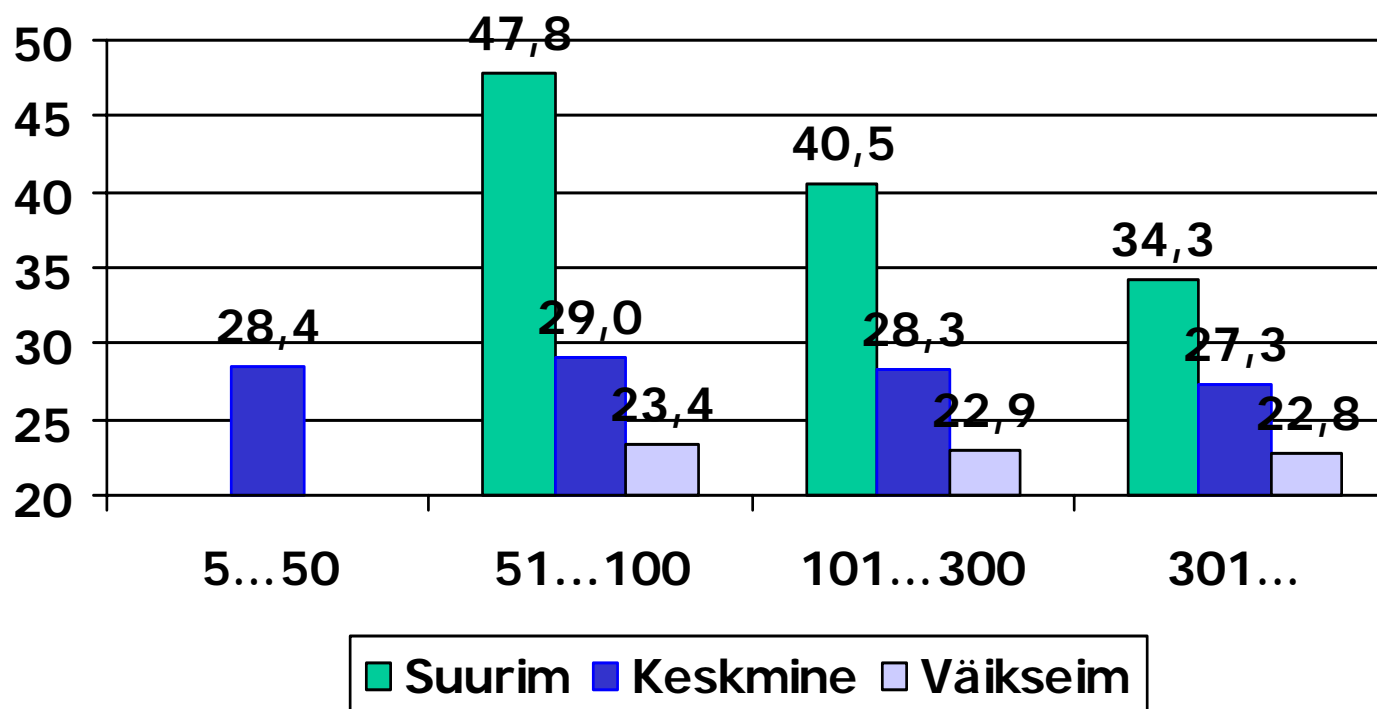
Soovituslik: 14-15 k (Veepro)

Esmaspoegimisi

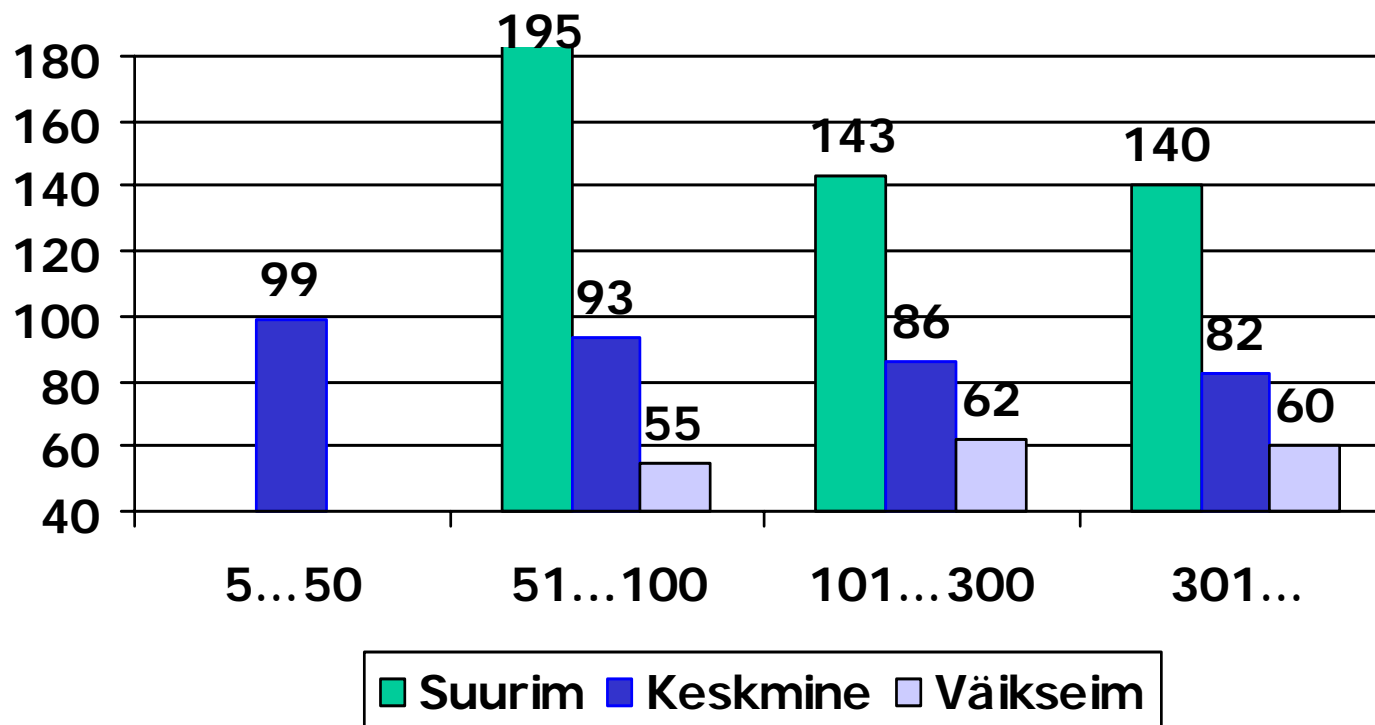


Soovituslik: 22-24 k (A. Brand et al: Herd Health and Production Management in Dairy Practice, 2001)

Esmaspoegimisiga erineva suurusega karjades

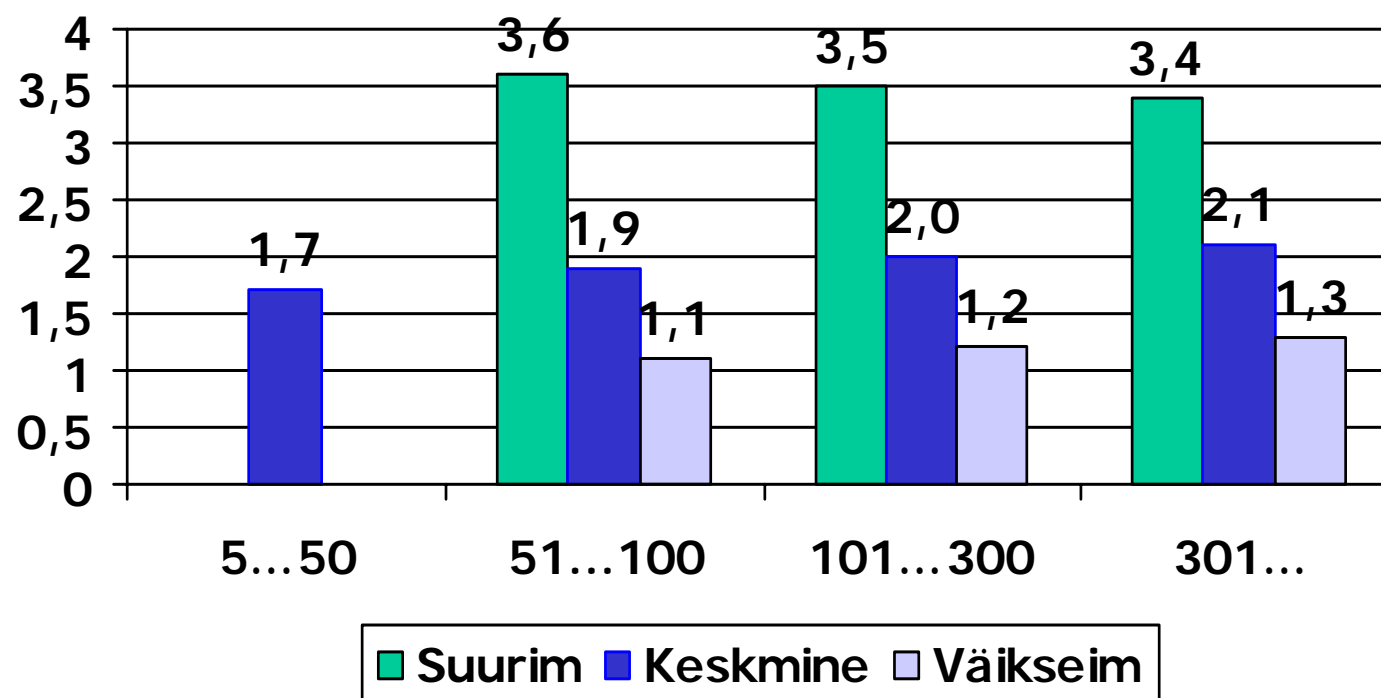


Päevi poegimisest esimese seemenduseni



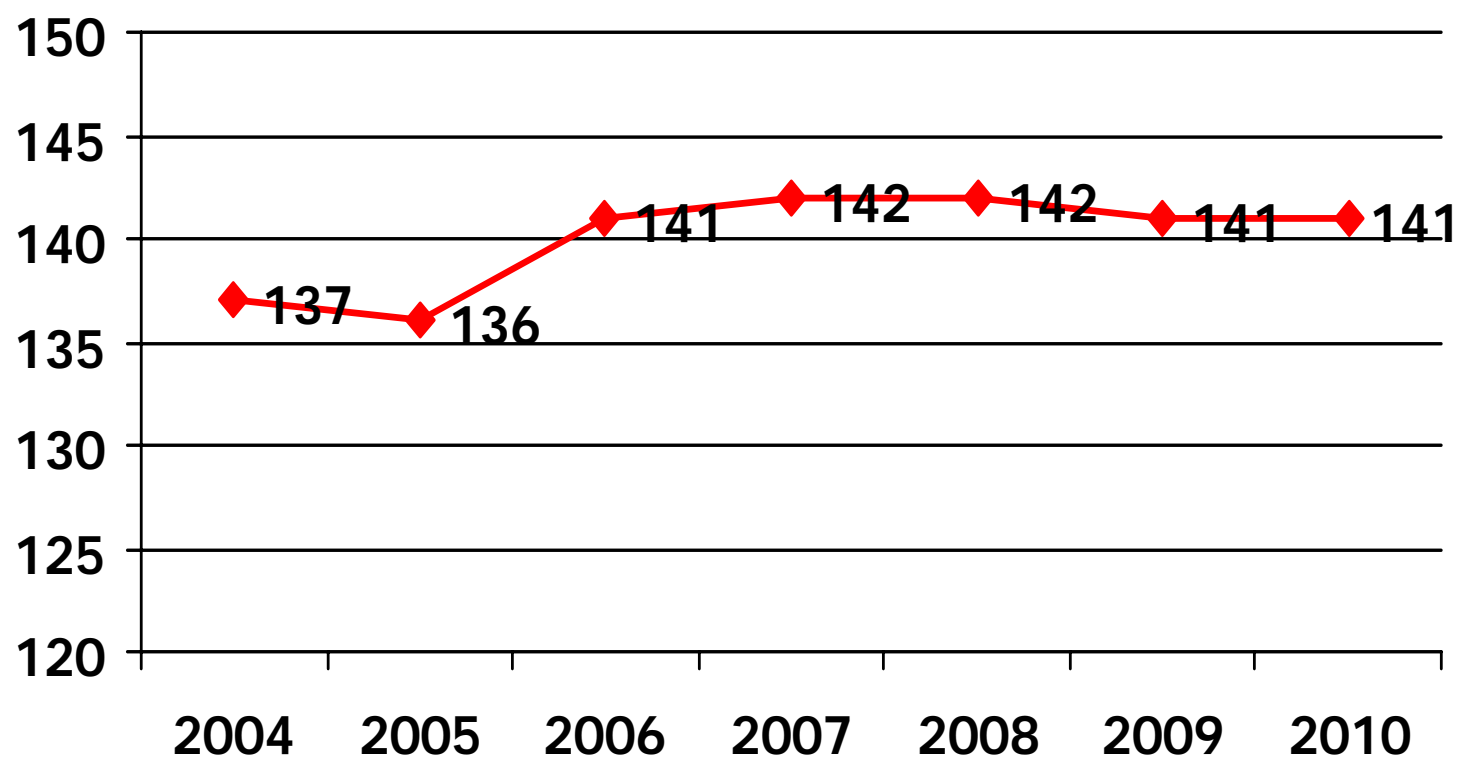
Soovituslik: 60...70 päeva (Samarütel, 2006), 50...75 päeva (Veepro)

Seemendusi tiinestumise kohta



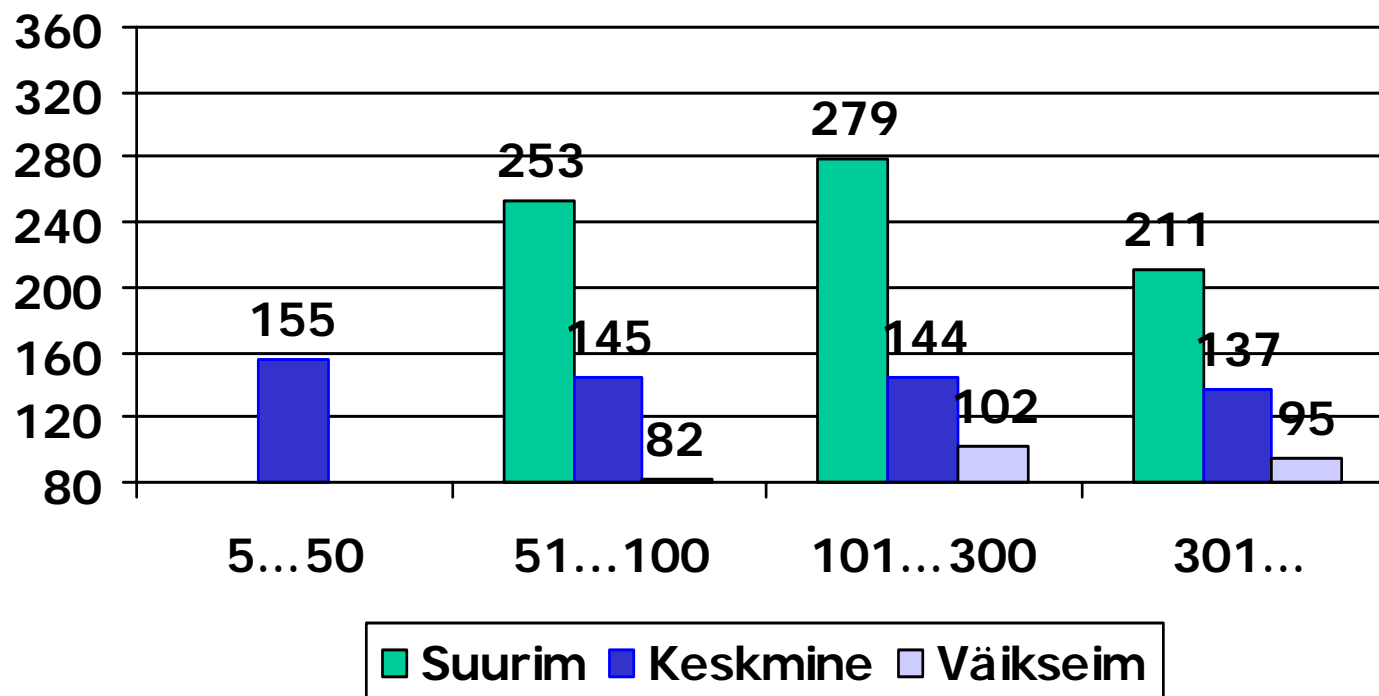
Soovituslik: 1,5 (M. Jalakas, K. Kask)

Uuslüpsiperioodi pikkus

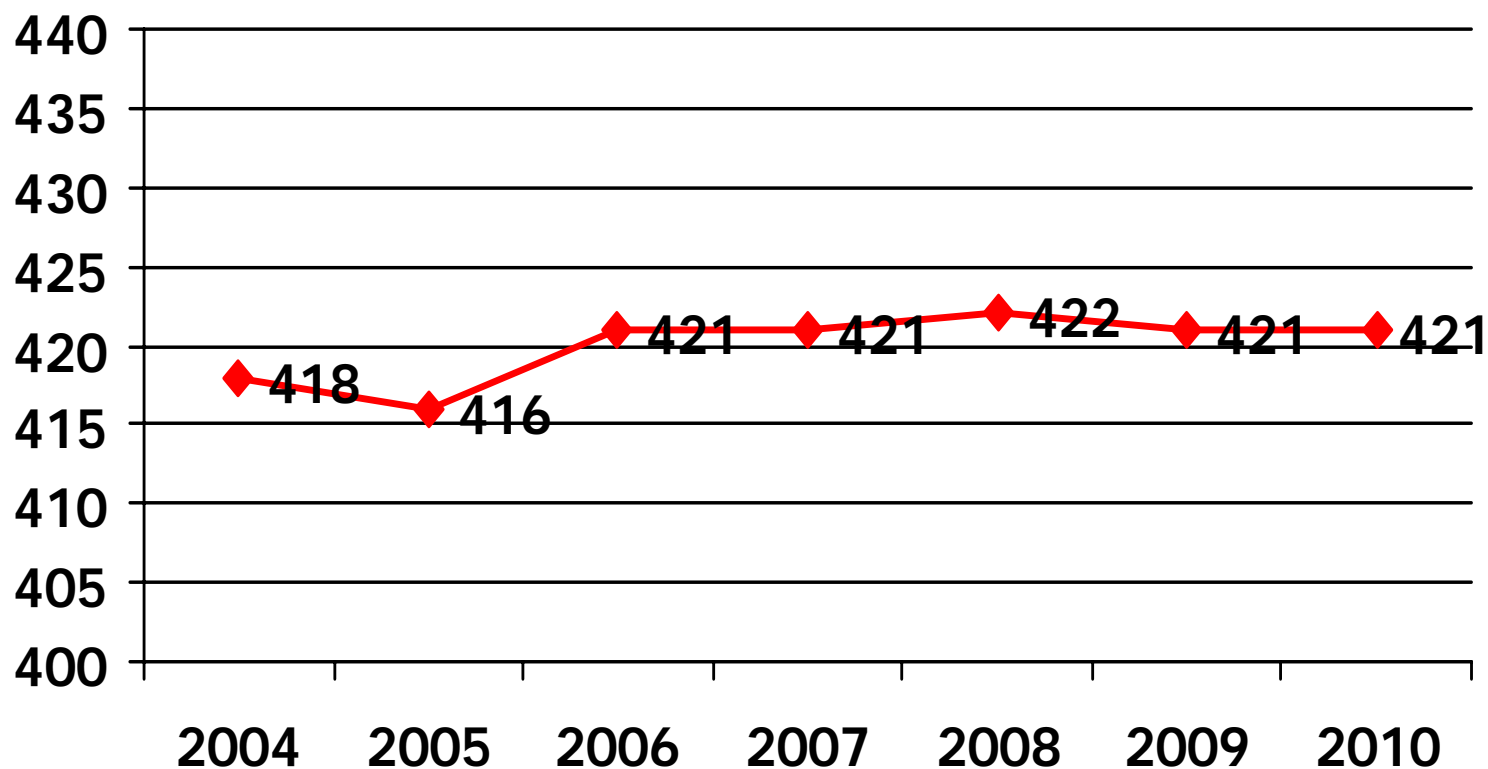


Soovituslik 85...110 (Samarütel), 85...125 päeva (Brand jt)

Uuslüpsiperiood erineva suurusega karjades

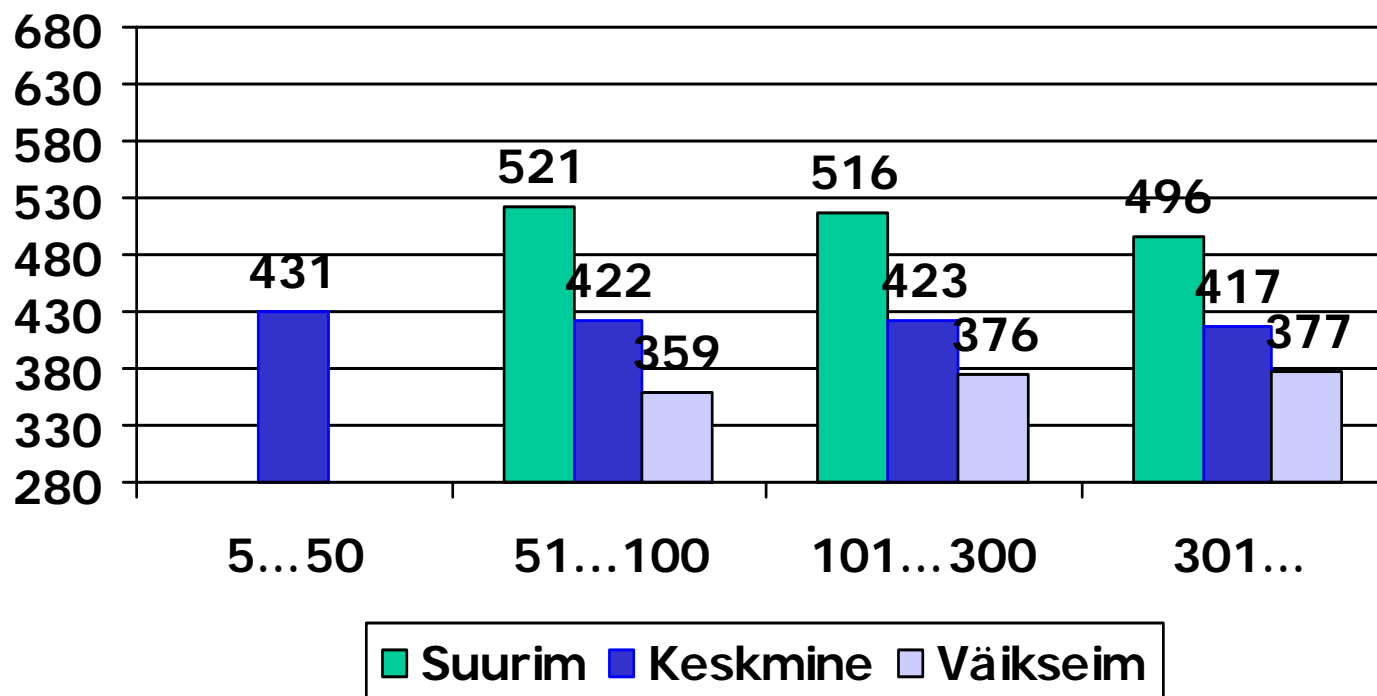


Poegimisvahemiku pikkus

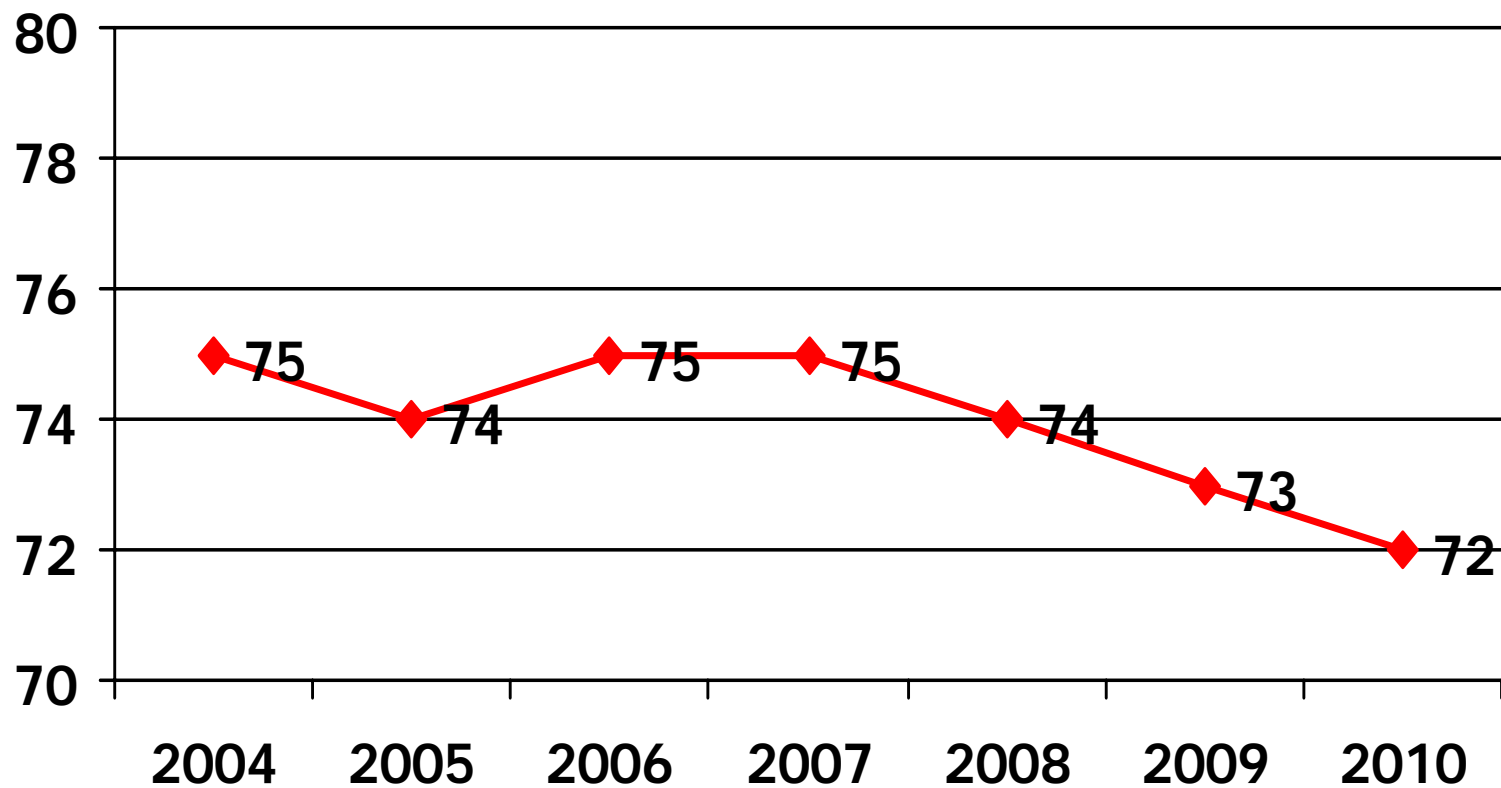


Soovituslik: 365 p (Veepro), <395 (Brand jt)

Poegimisvahemik erineva suurusega karjades

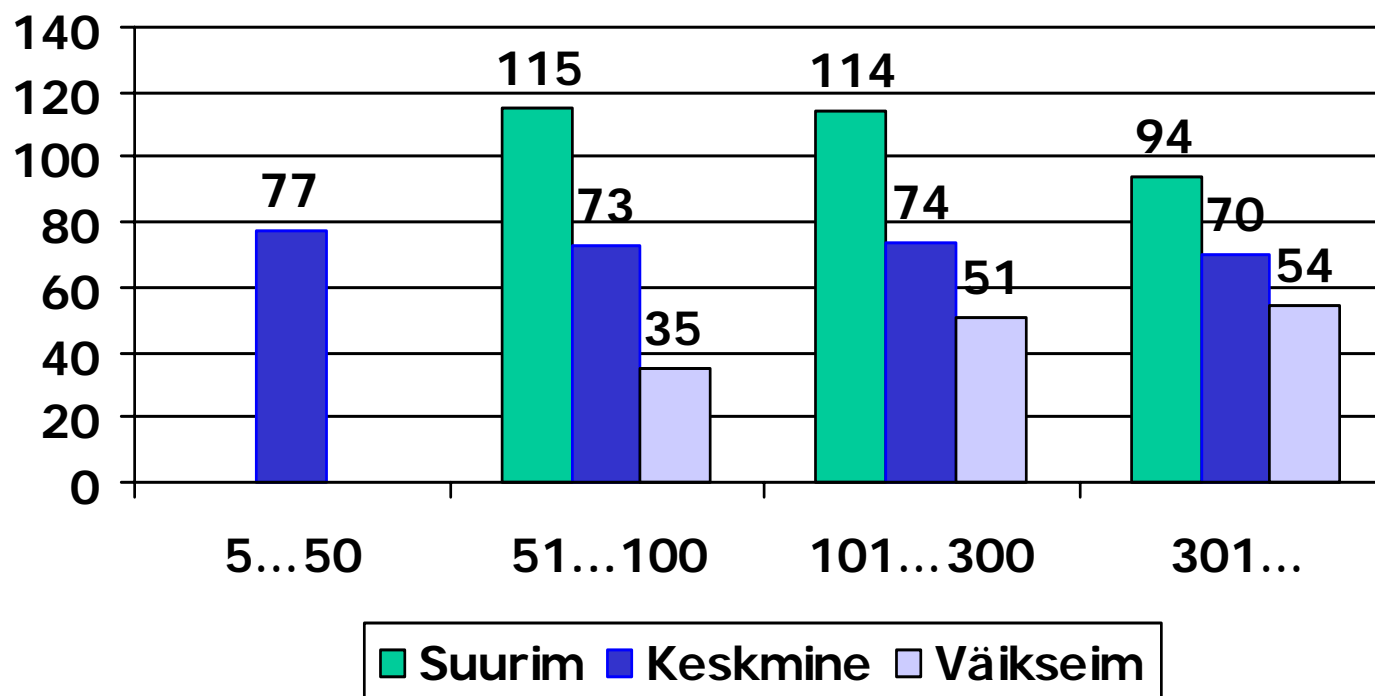


Kinnisperioodi pikkus

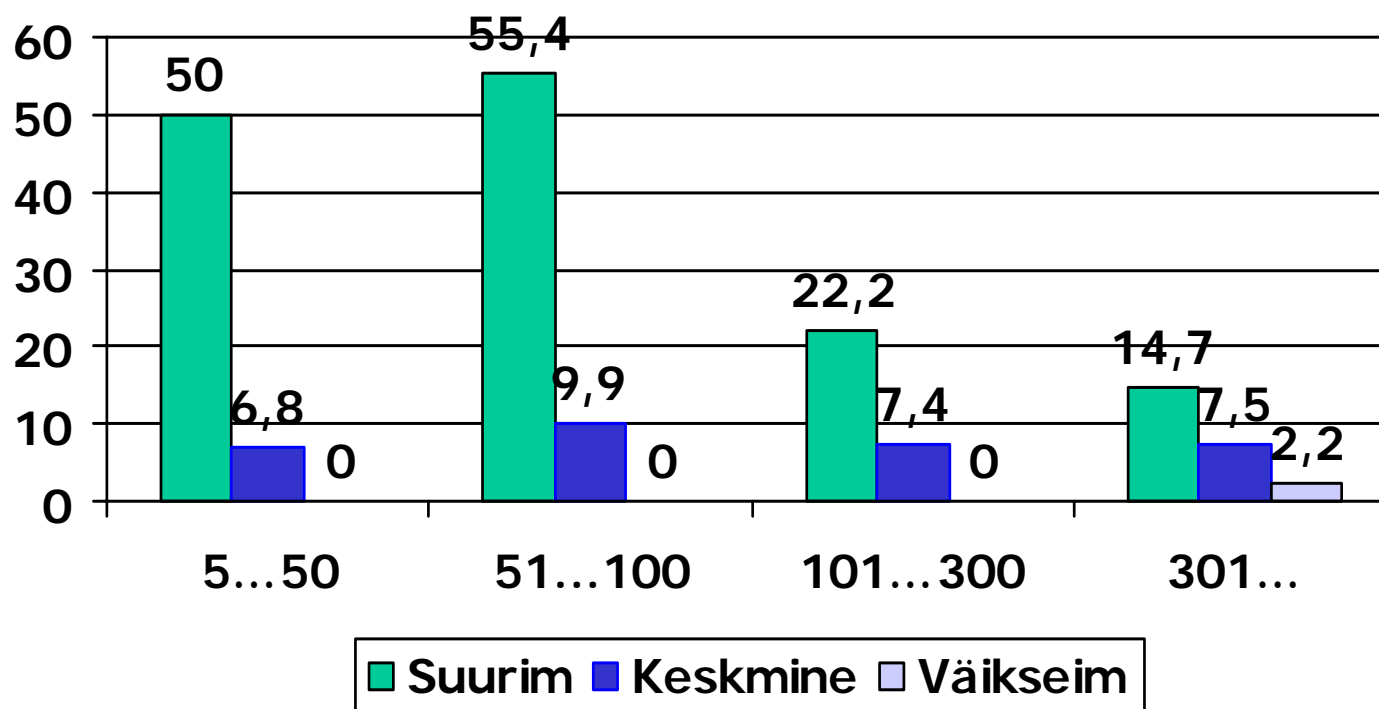


Soovituslik 50-70 päeva (Brand jt).

Kinnisperiood erineva suurusega karjades



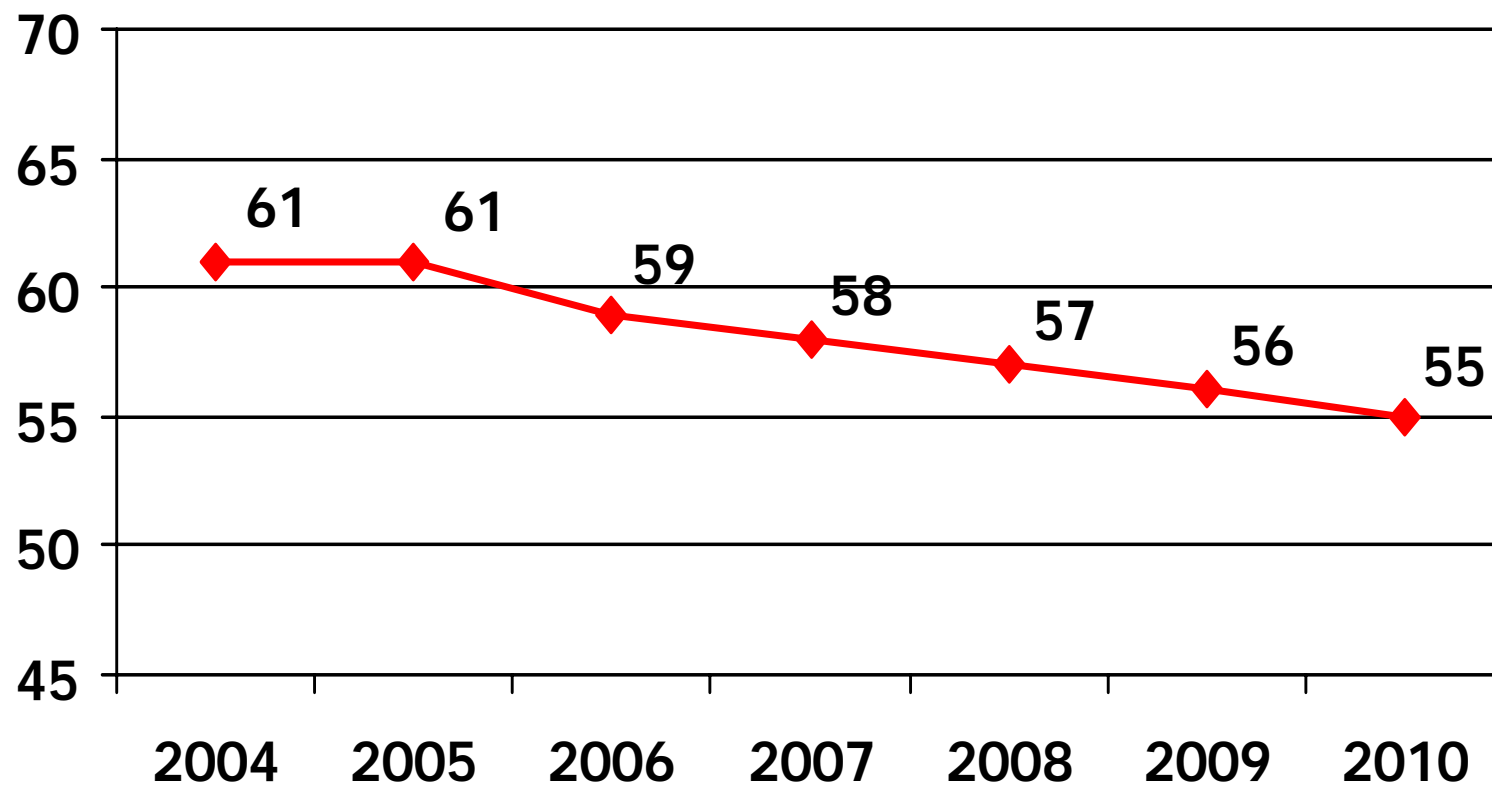
Surnultsünde erineva suurusega karjades (%)



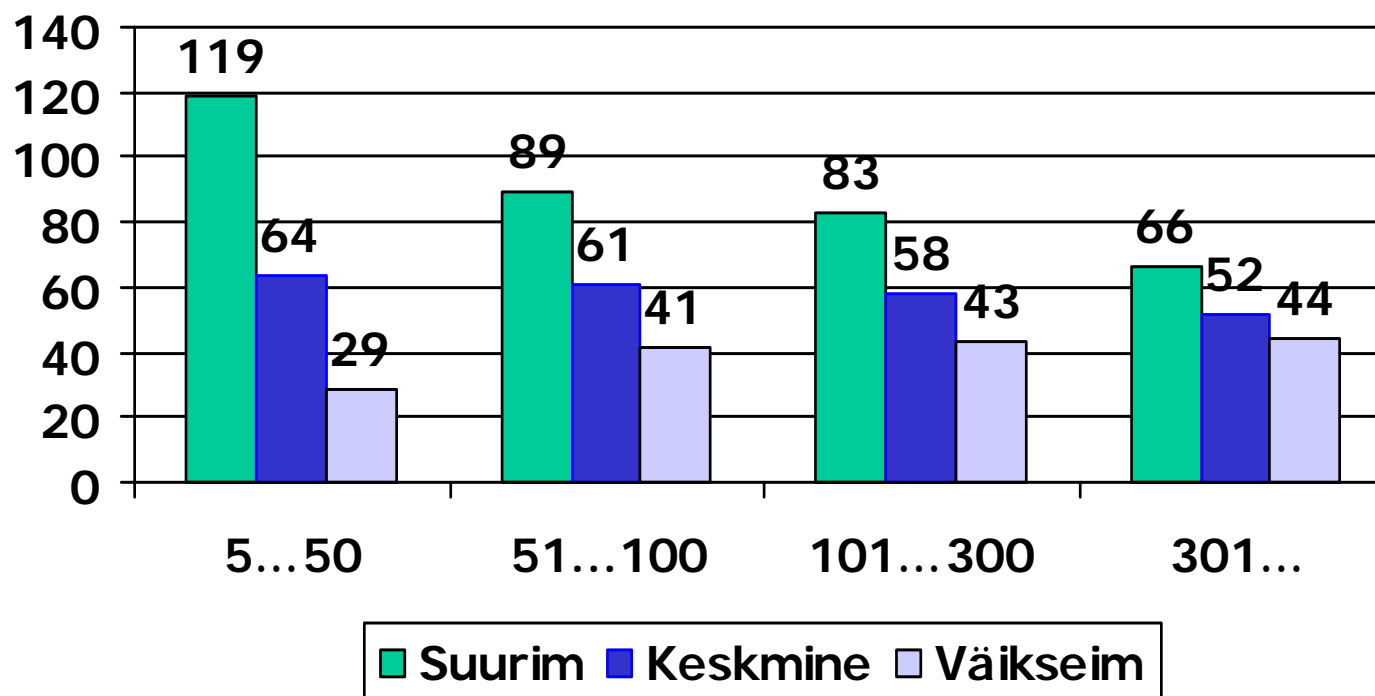
Soovituslik: <5%



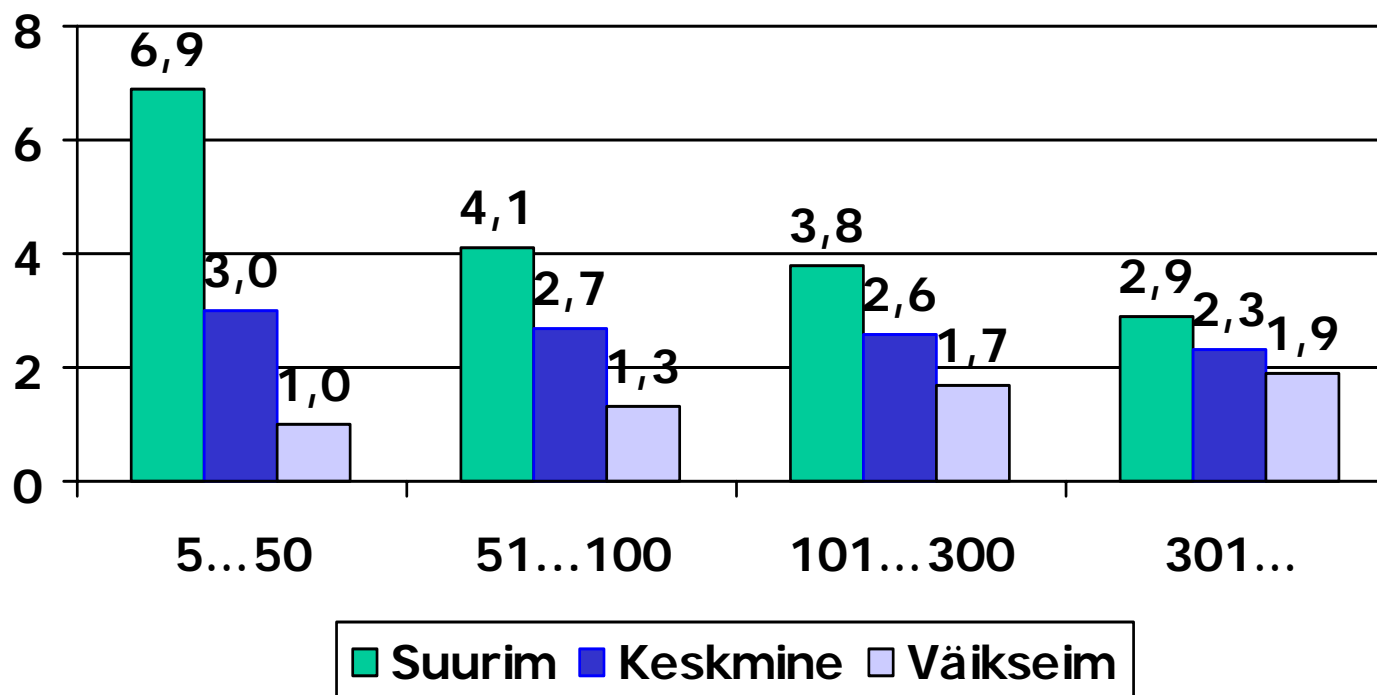
Karjasolevate lehmade keskmine vanus (k)



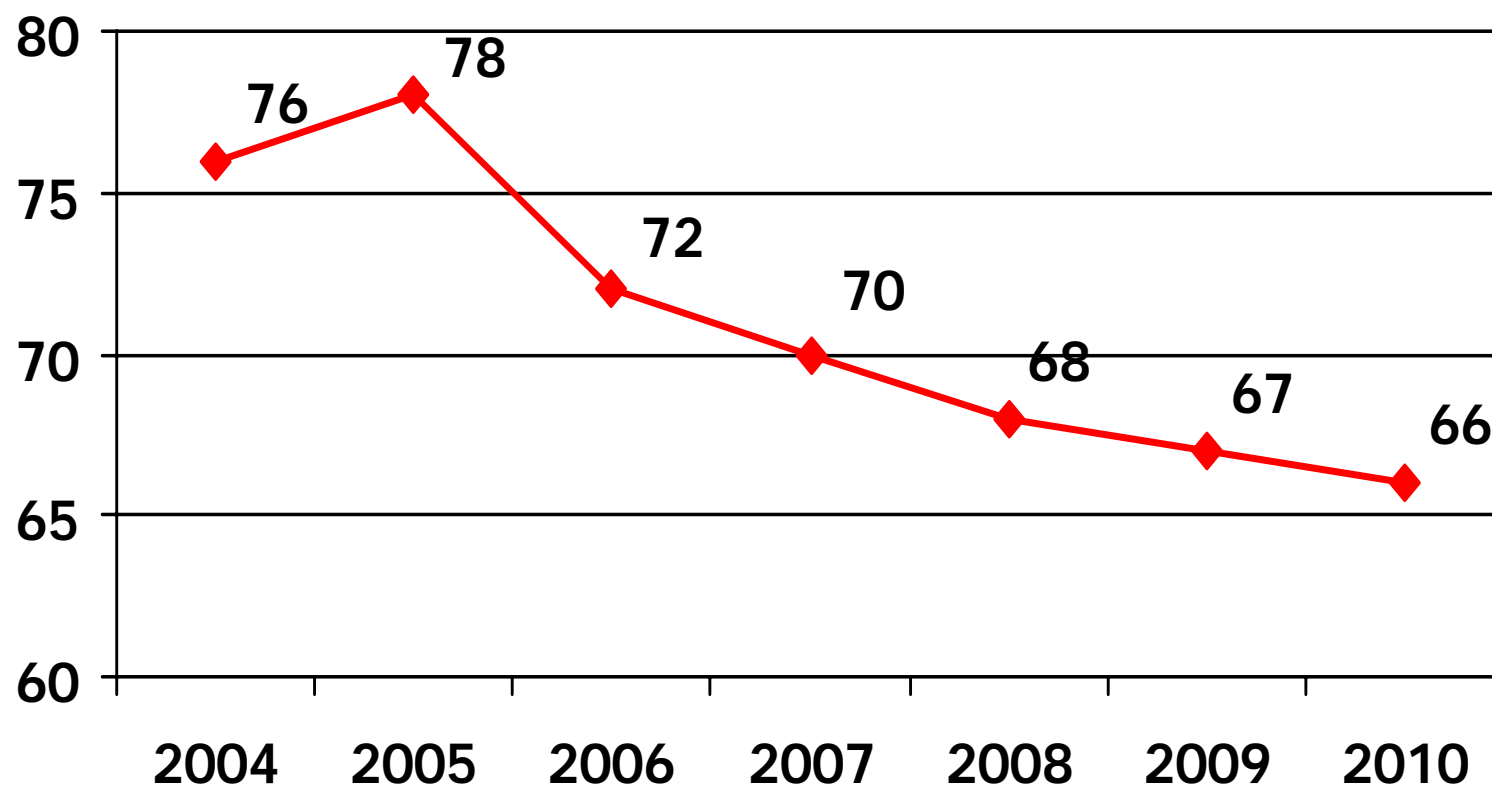
Karjasolevate lehmade vanus erineva suurusega karjades



Karjasolevate lehmade keskmine vanus laktatsioonides

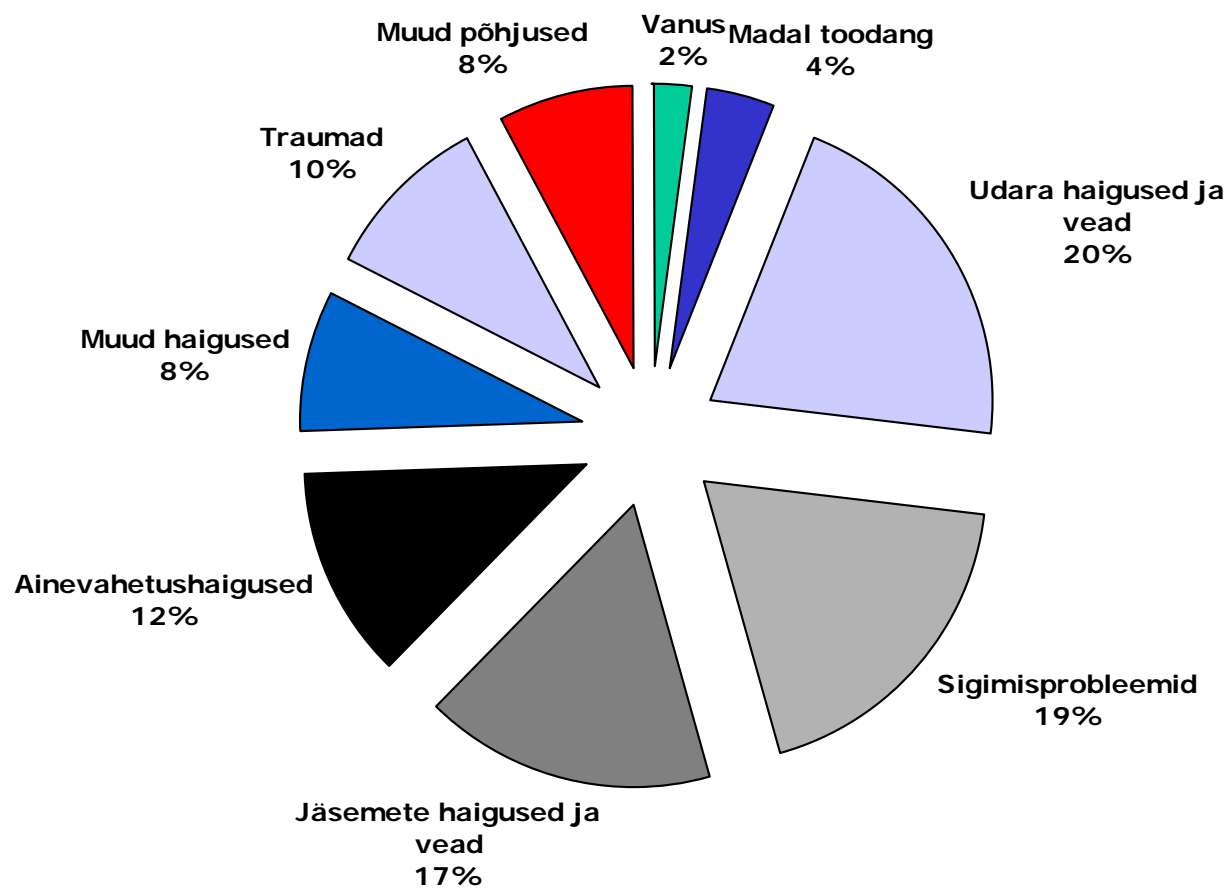


Lehmade vanus väljaminekul (k)

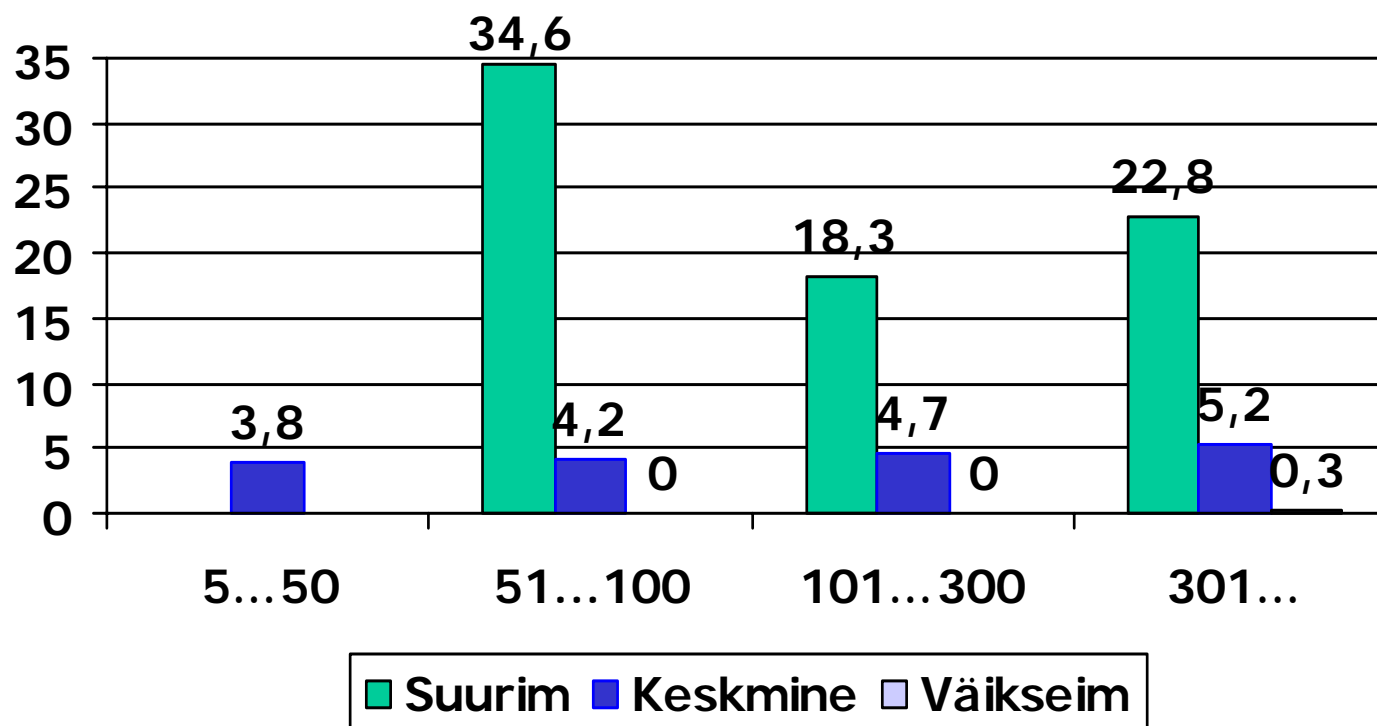


*Lehm hakkab n.ö kasumit tootma 2. laktatsiooni teisest poolest
(Janowitz, 2008)

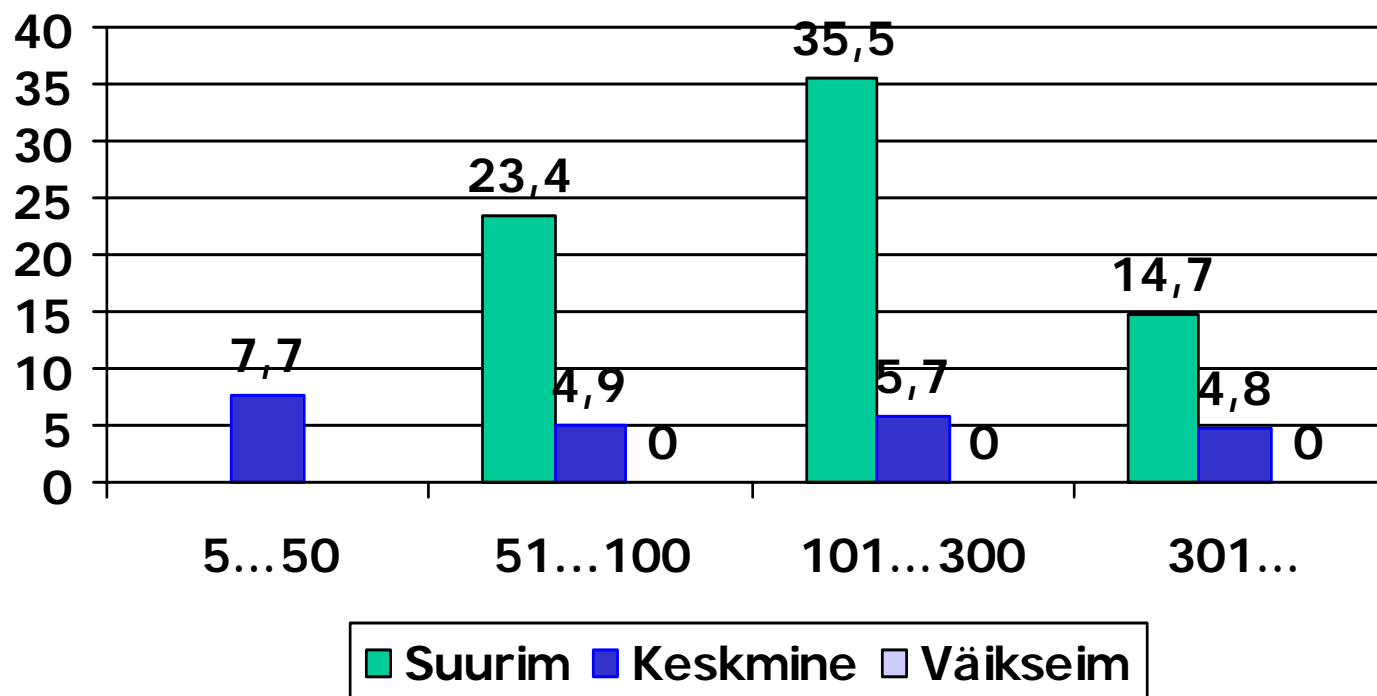
Lehmade karjast väljamineku põhjused



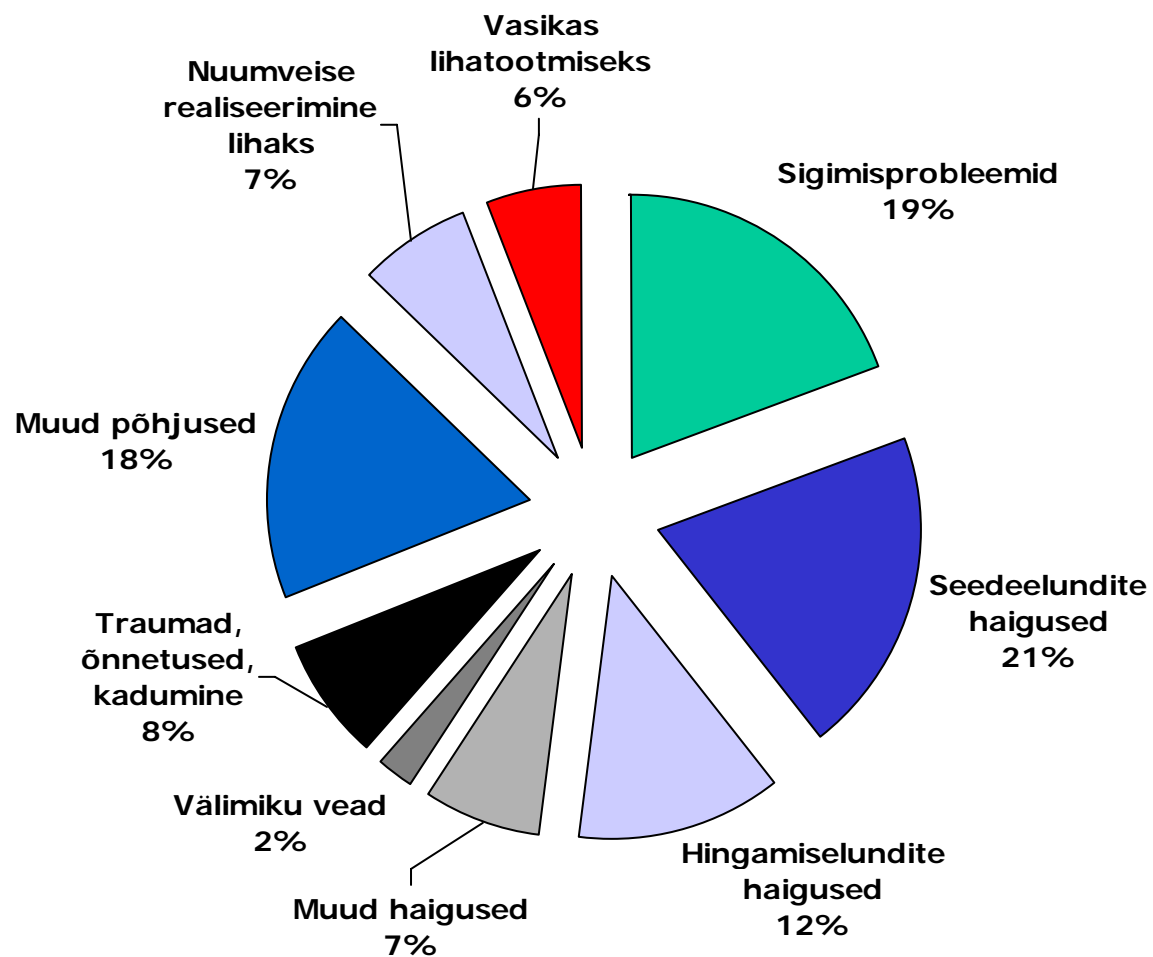
Lehmikute karjast väljaminek (... 6 k)



Lehmikute karjast väljaminek (6k - ...)



Lehmikute karjast väljamineku põhjused



Karjade võrdlus - võimalus võrrelda enda karja tulemusi teiste karjadega

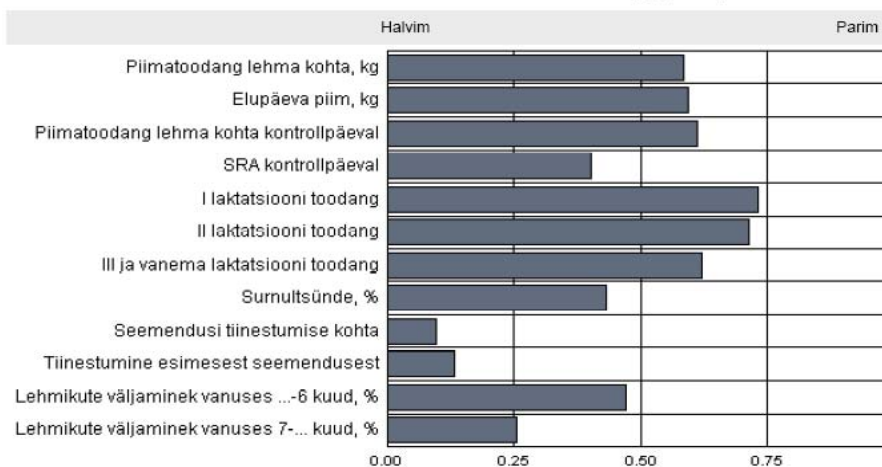


Karjade võrdlus seisuga 31.10.08

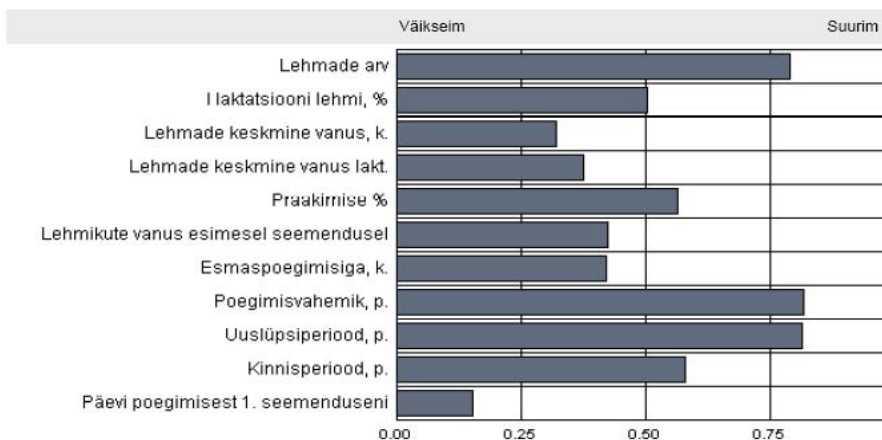
16.02.09

Karja omaniku nimi

Võrdlus vabariigiga. Karjade arv: 1082



Halvim	Ise	Parim	Keskmine
2714	6639	11464	7350
2.5	9.5	15.7	7.4
6.6	20.3	35.3	18.8
3015	387	17	415
2274	6630	10318	6886
2308	7445	11608	7639
2408	7093	11559	7428
75.0	6.6	0.0	7.2
3.8	2.3	1.0	2.0
0.0	40.8	100.0	48.5
71.4	2.4	0.0	2.6
63.6	9.8	0.0	2.7



Väikseim	Ise	Suurim	Keskmine
5	114	1976	83
0.0	15.5	57.1	11.1
31	57	123	75
1.0	2.7	6.9	2.7
0.0	23.0	62.9	24.1
12.1	16.7	34.5	17.7
20.3	26.8	45.0	28.4
322	455	684	422
47	175	525	142
30	75	364	77
34	73	241	87

Tänan!

