

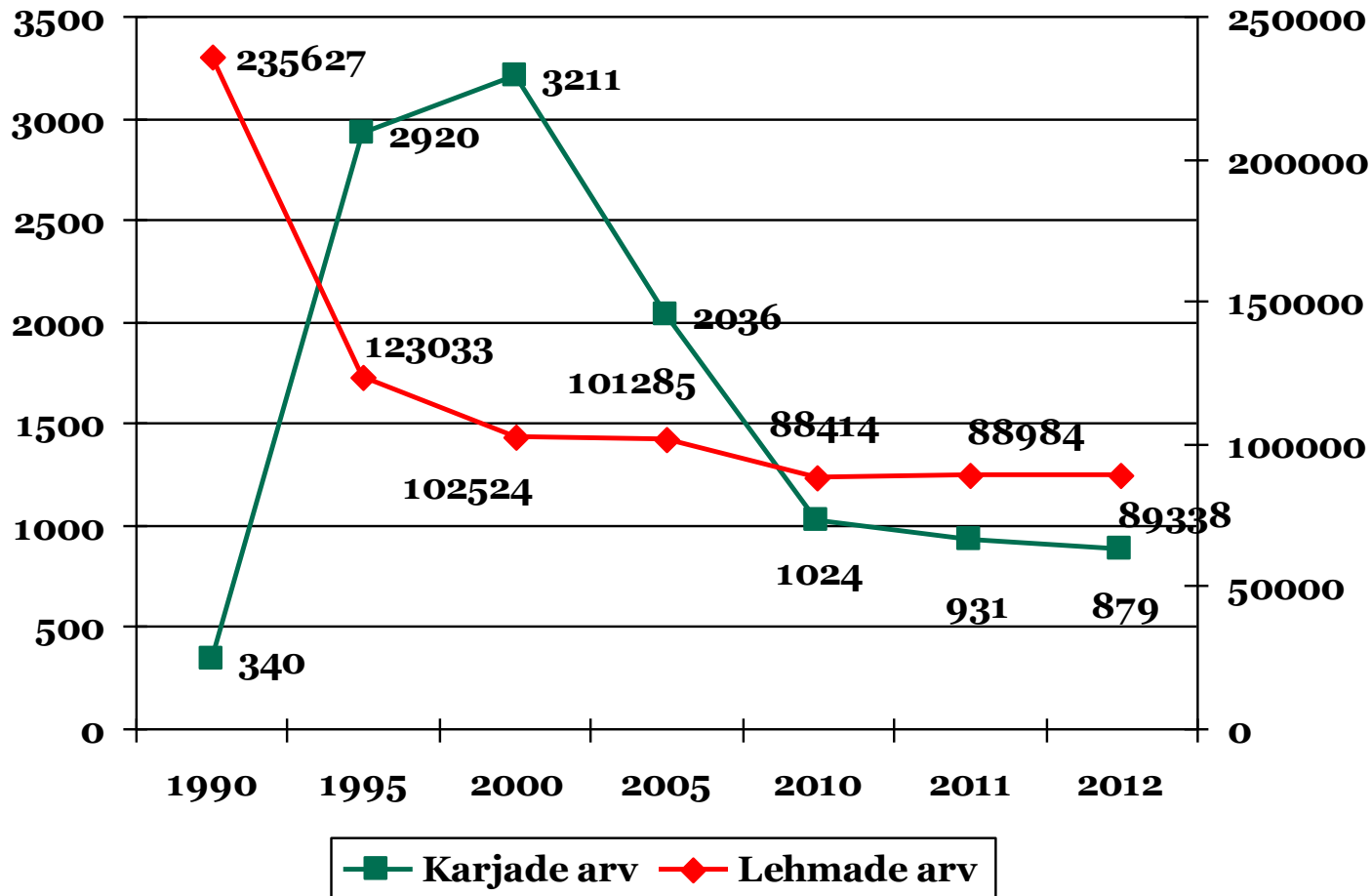


Jõudluskontrolli Keskus
Estonian Animal Recording Centre

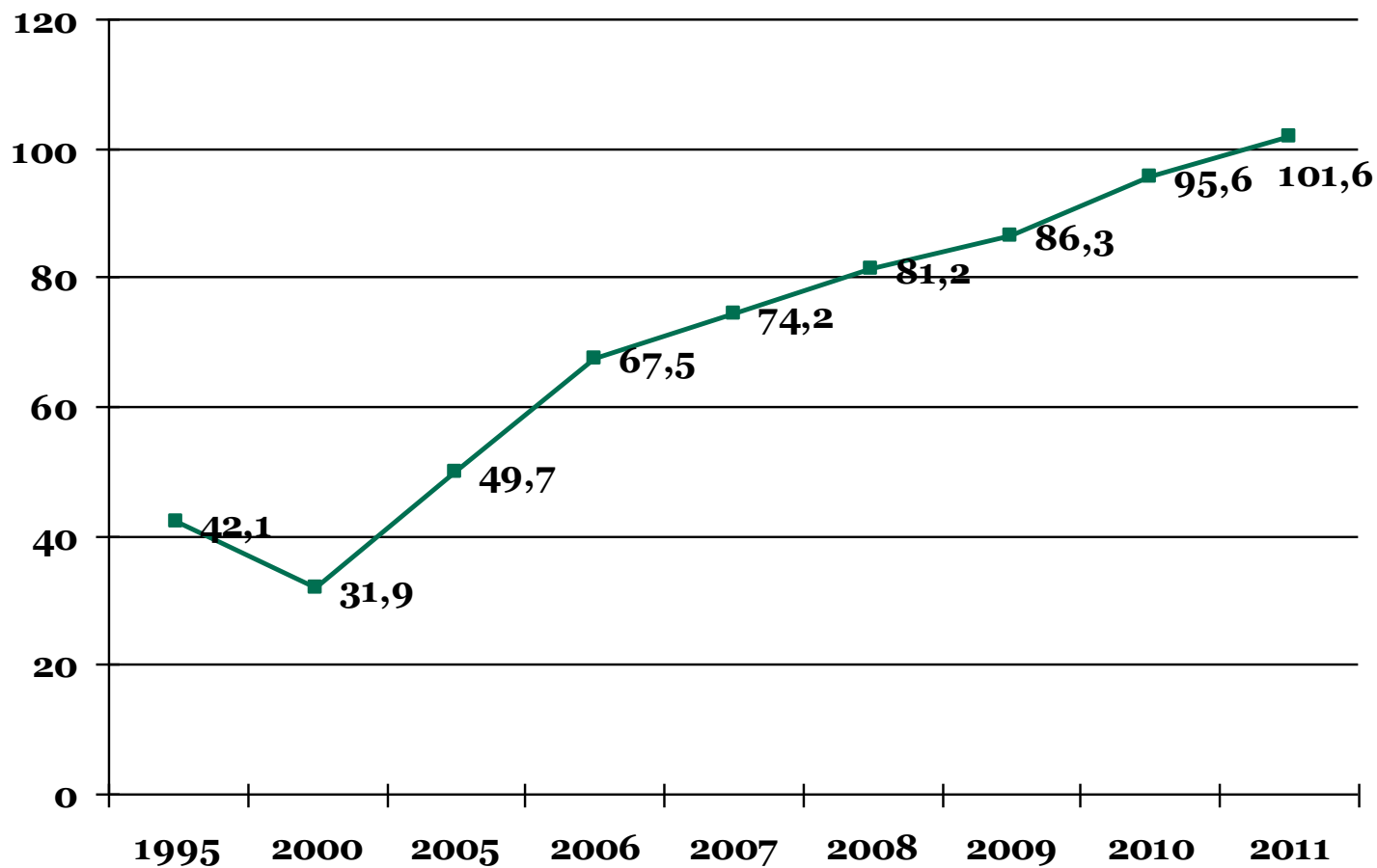
Olukord piimakarjades jõudluskontrolli tulemuste põhjal

Aire Pentjärv
1. märts 2012

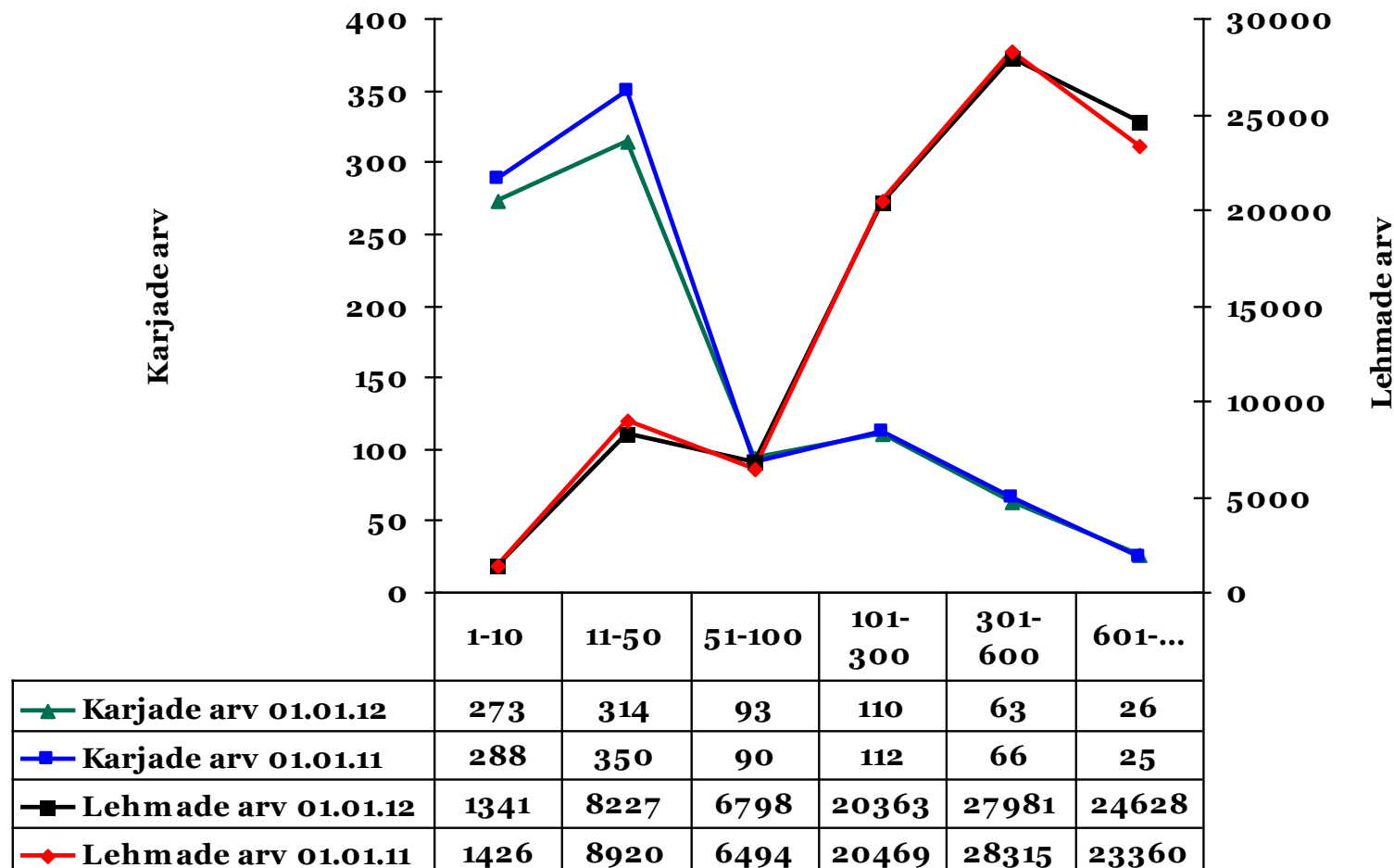
Karjade ja lehmade arv 1. jaanuaril



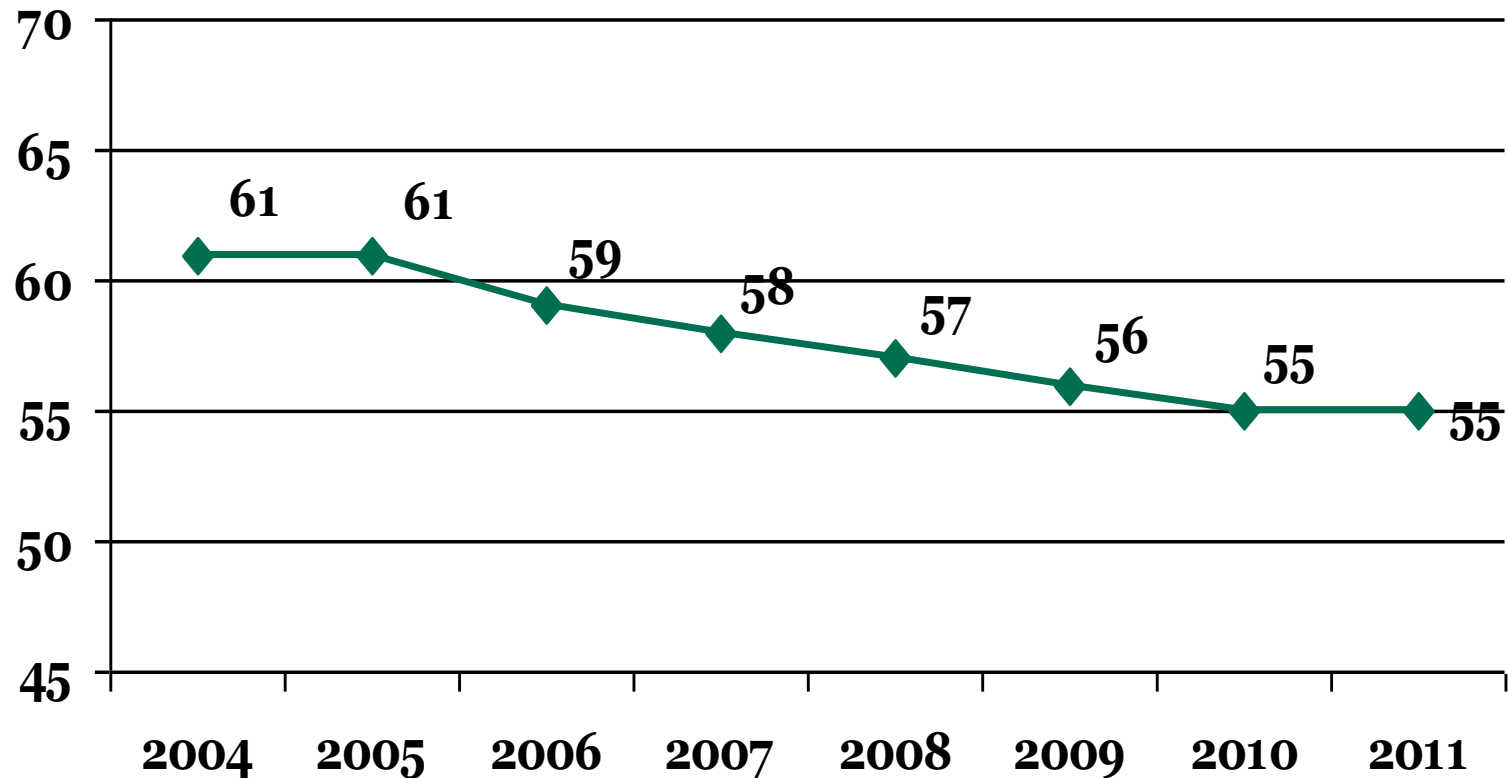
Lehmade arv karjas



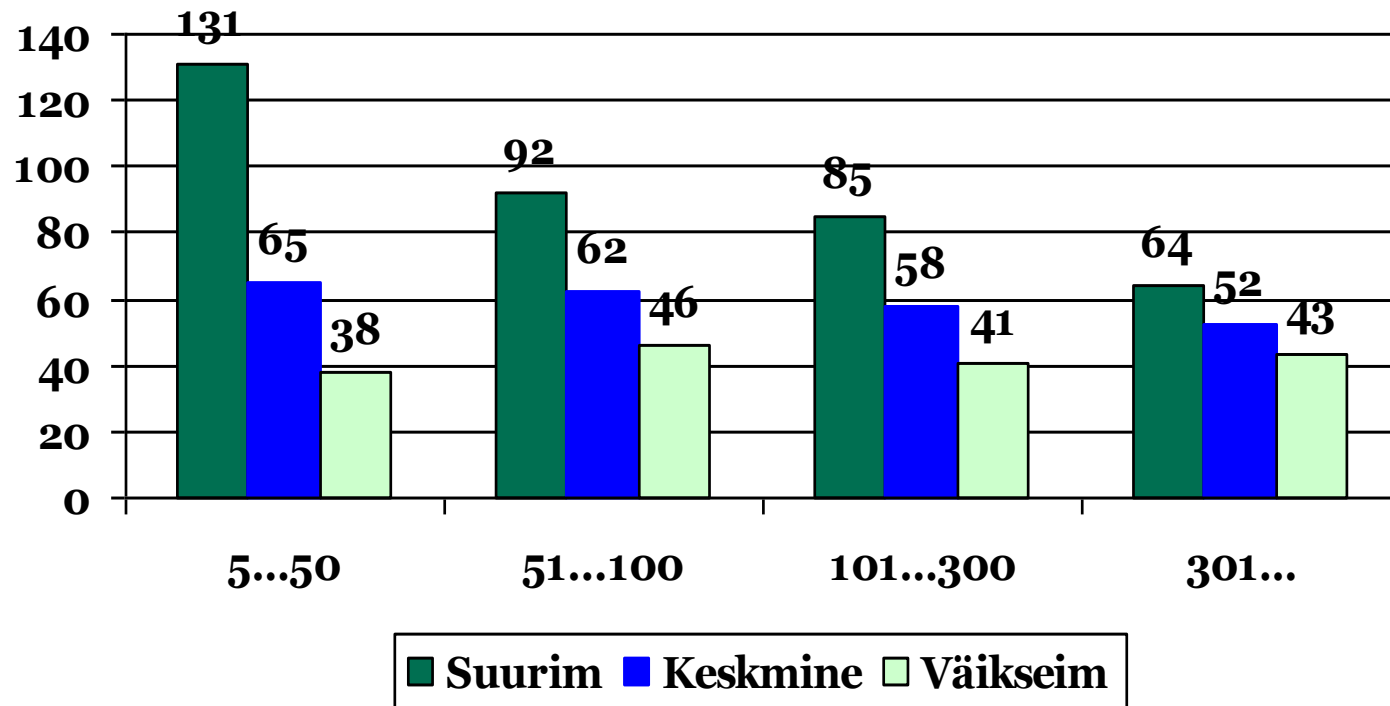
Karjade struktuur



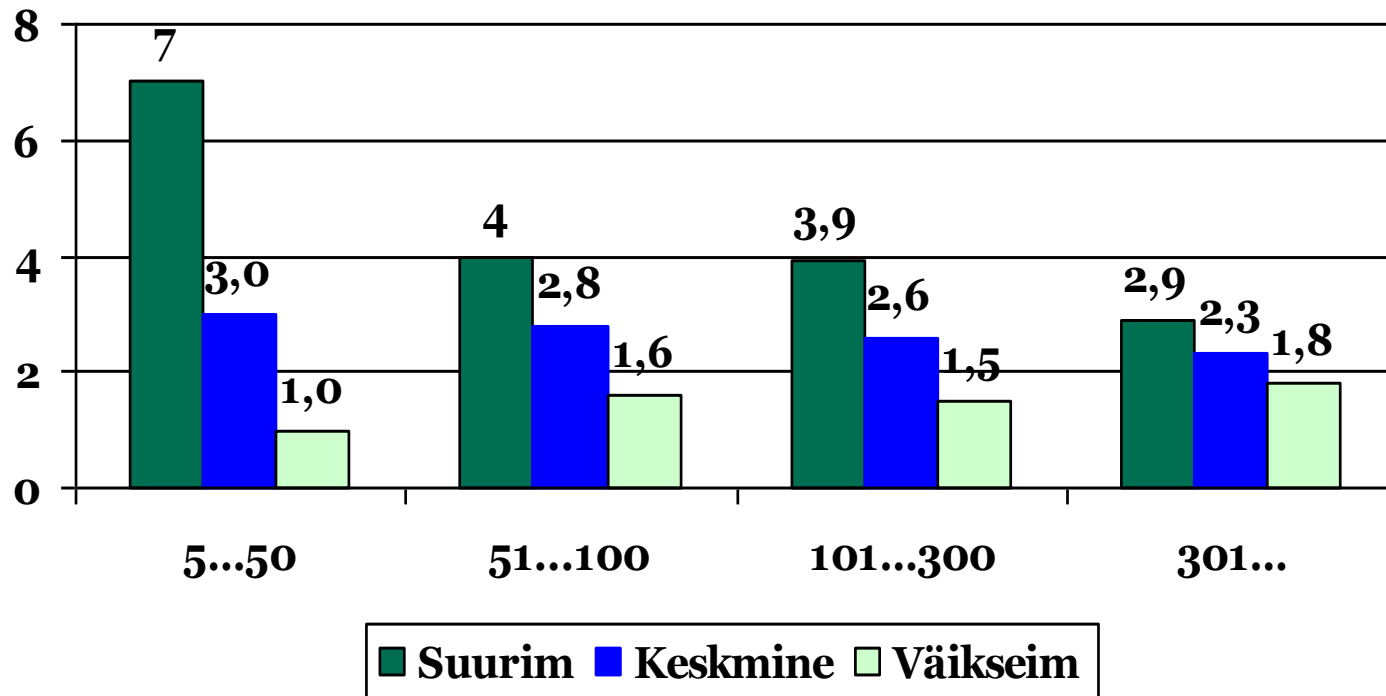
Karjasolevate lehmade keskmine vanus (k)



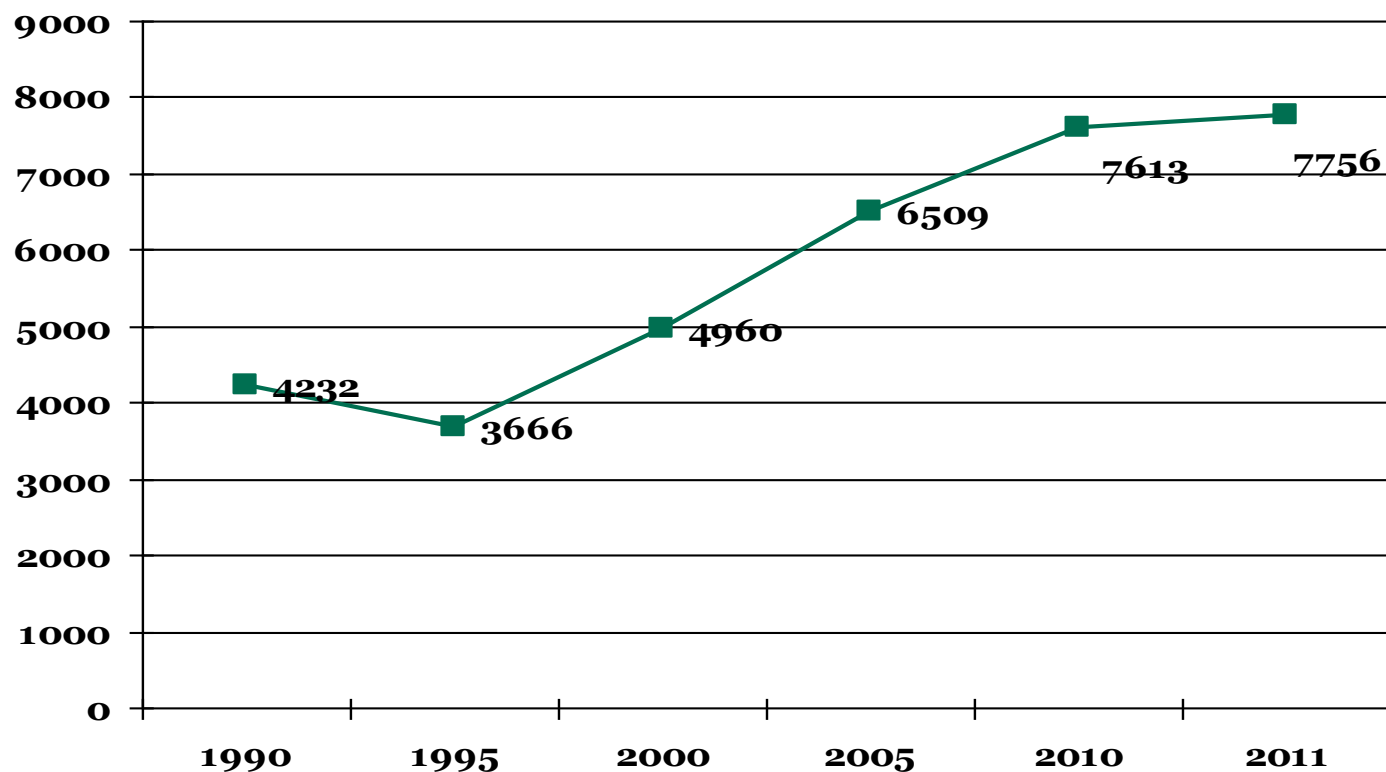
Karjasolevate lehmade vanus erineva suurusega karjades



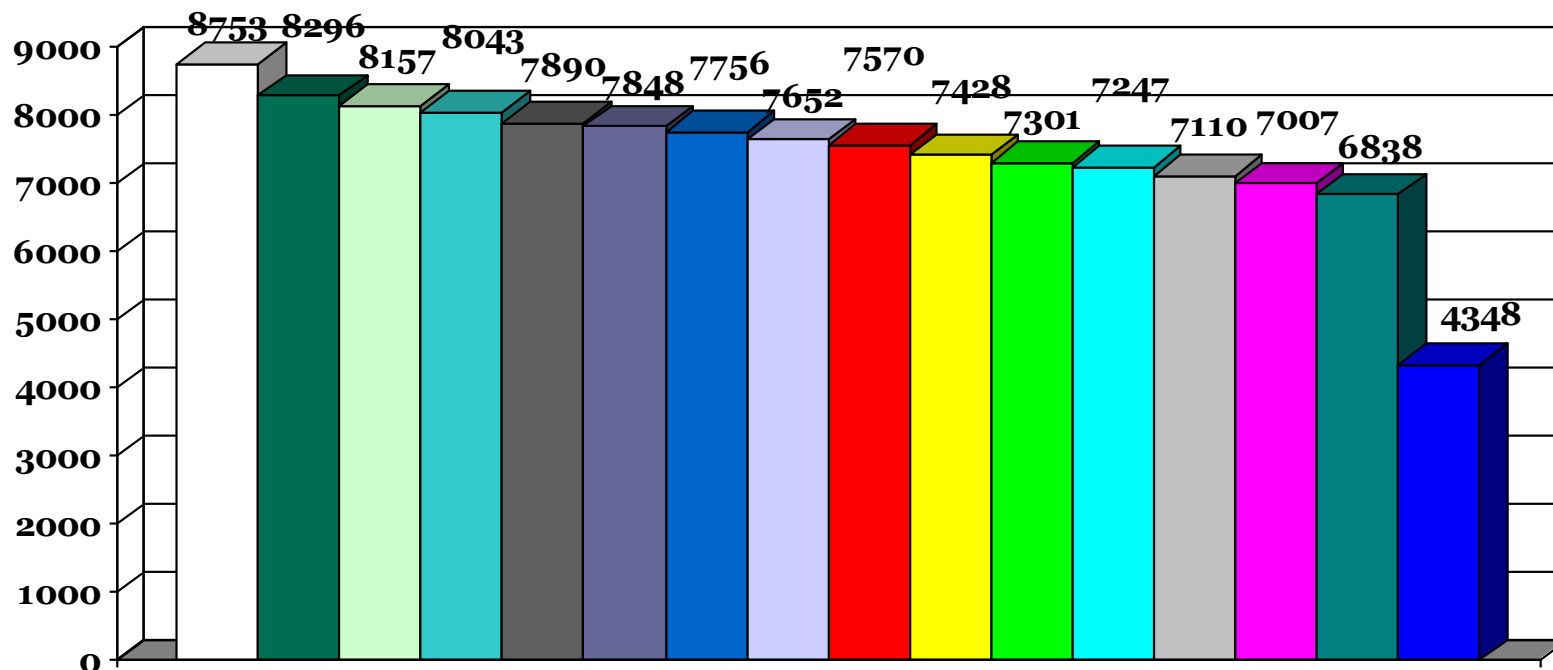
Karjasolevate lehmade keskmine vanus laktatsioonides



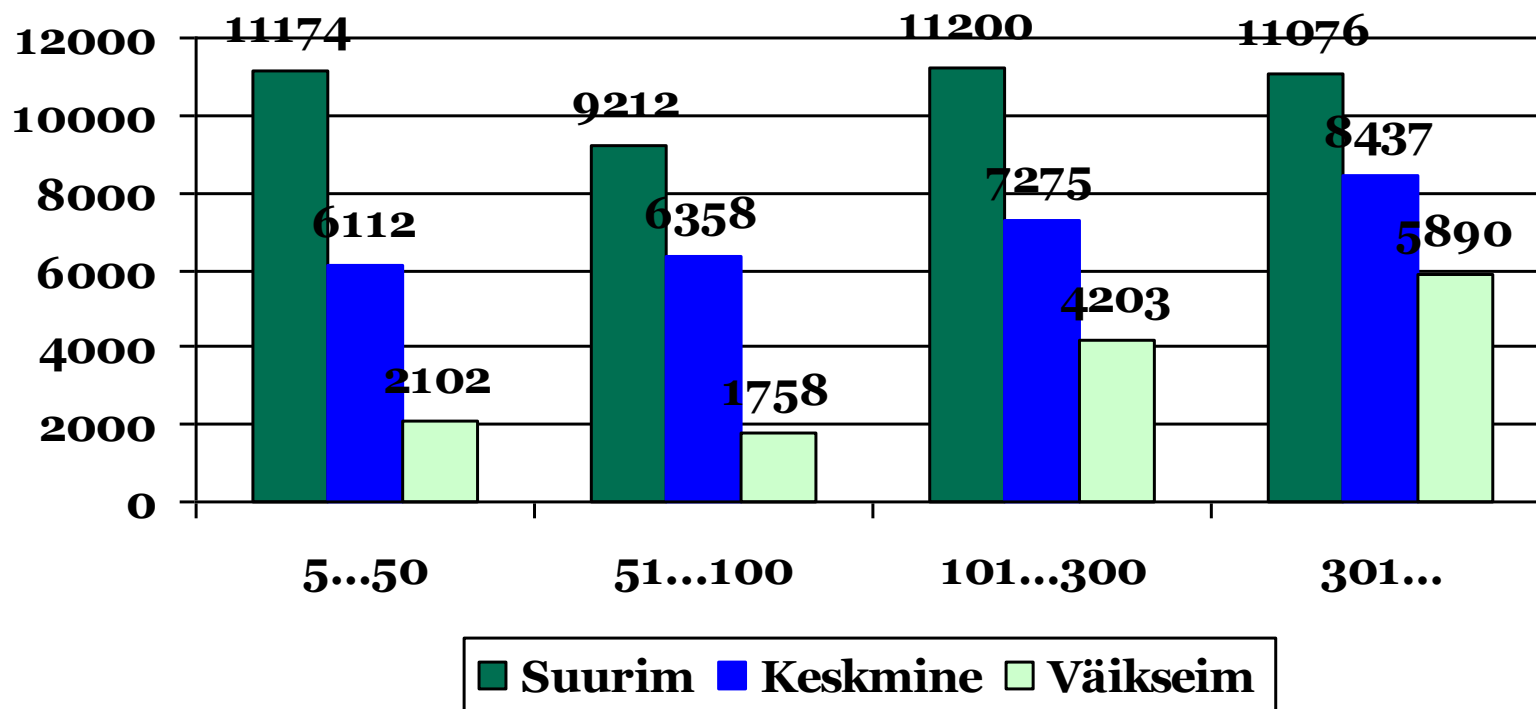
Piimatoodang lehma kohta (kg)



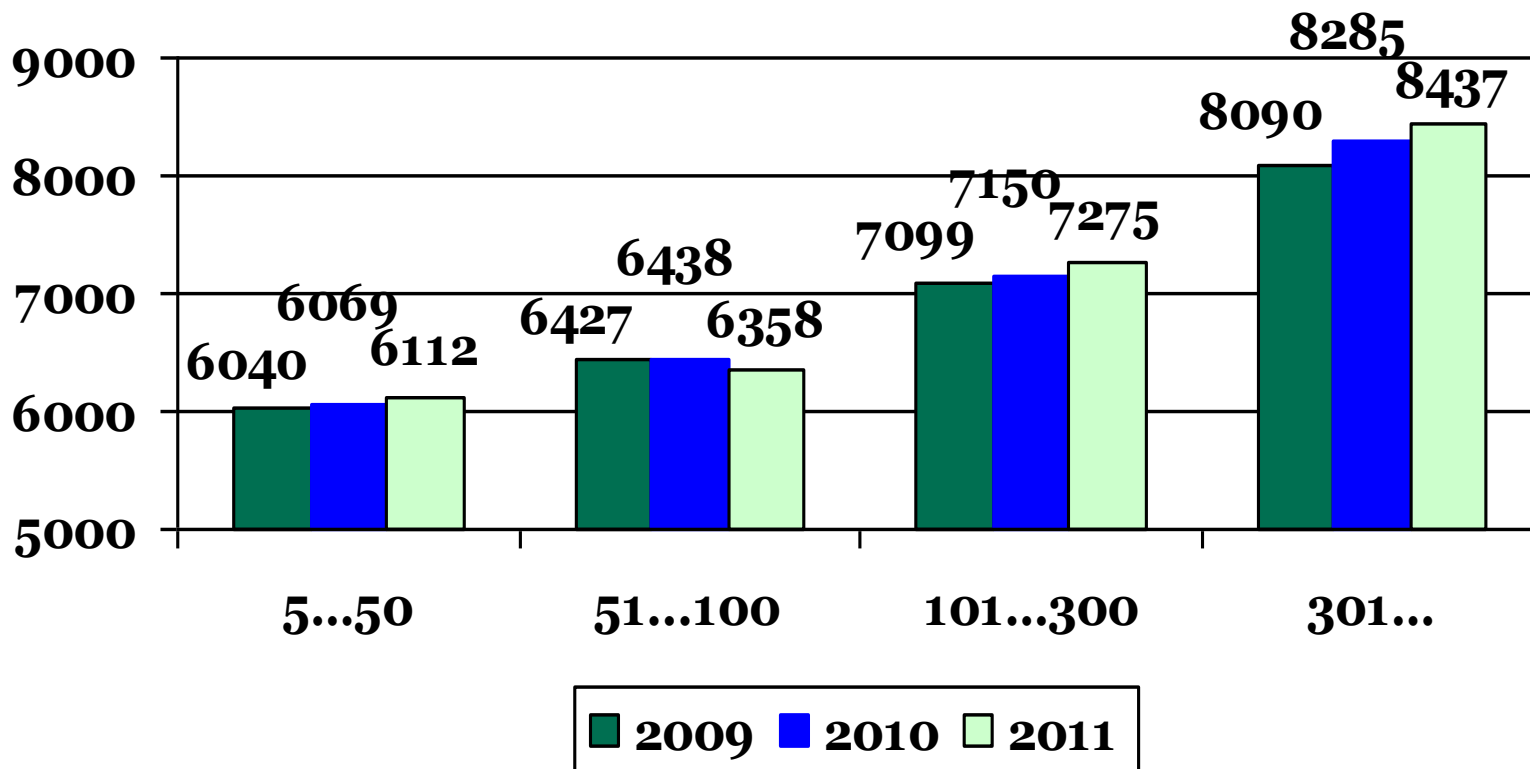
Piimatoodang lehma kohta maakondades 2011. a



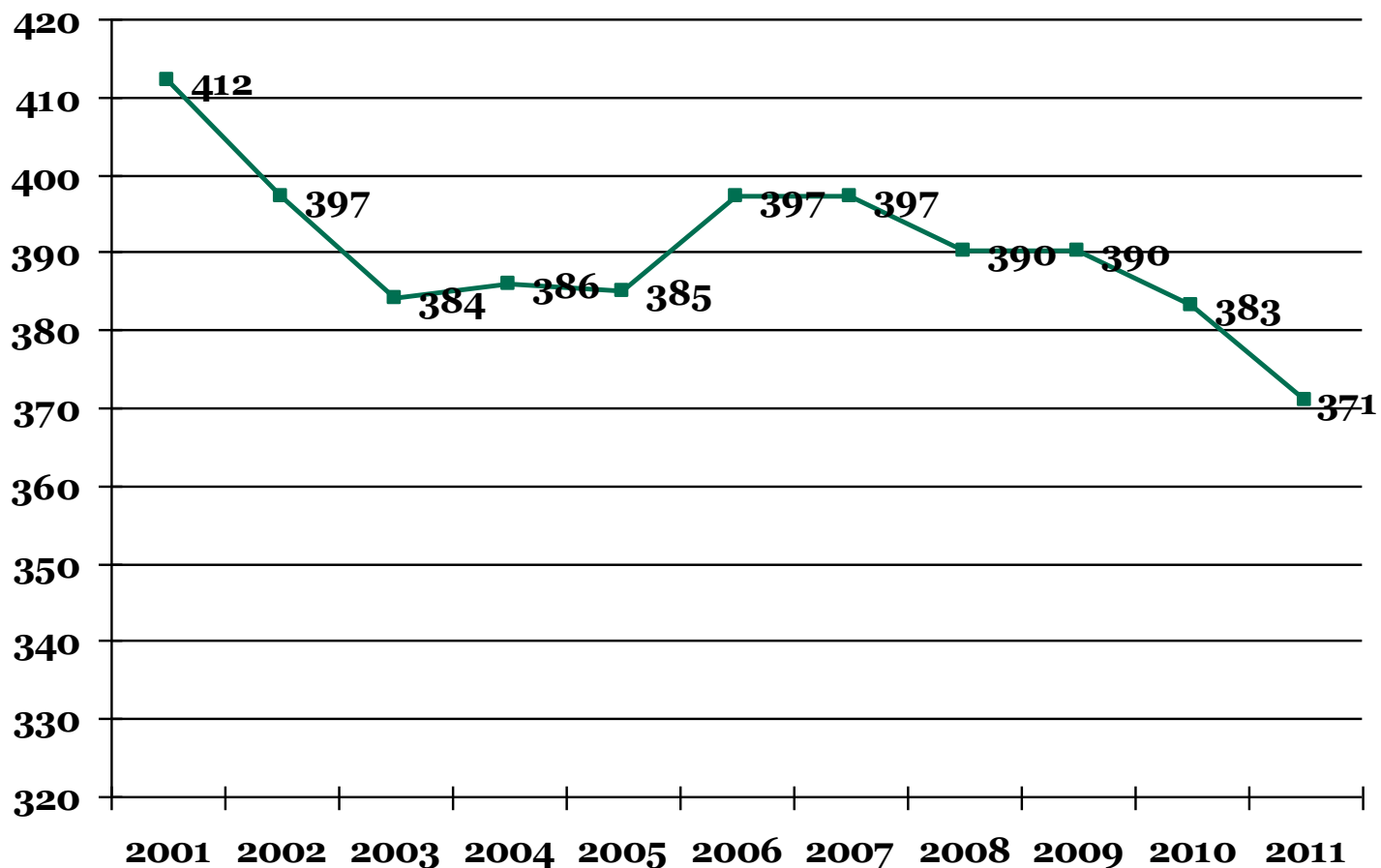
Piimatoodang erineva suurusega karjades



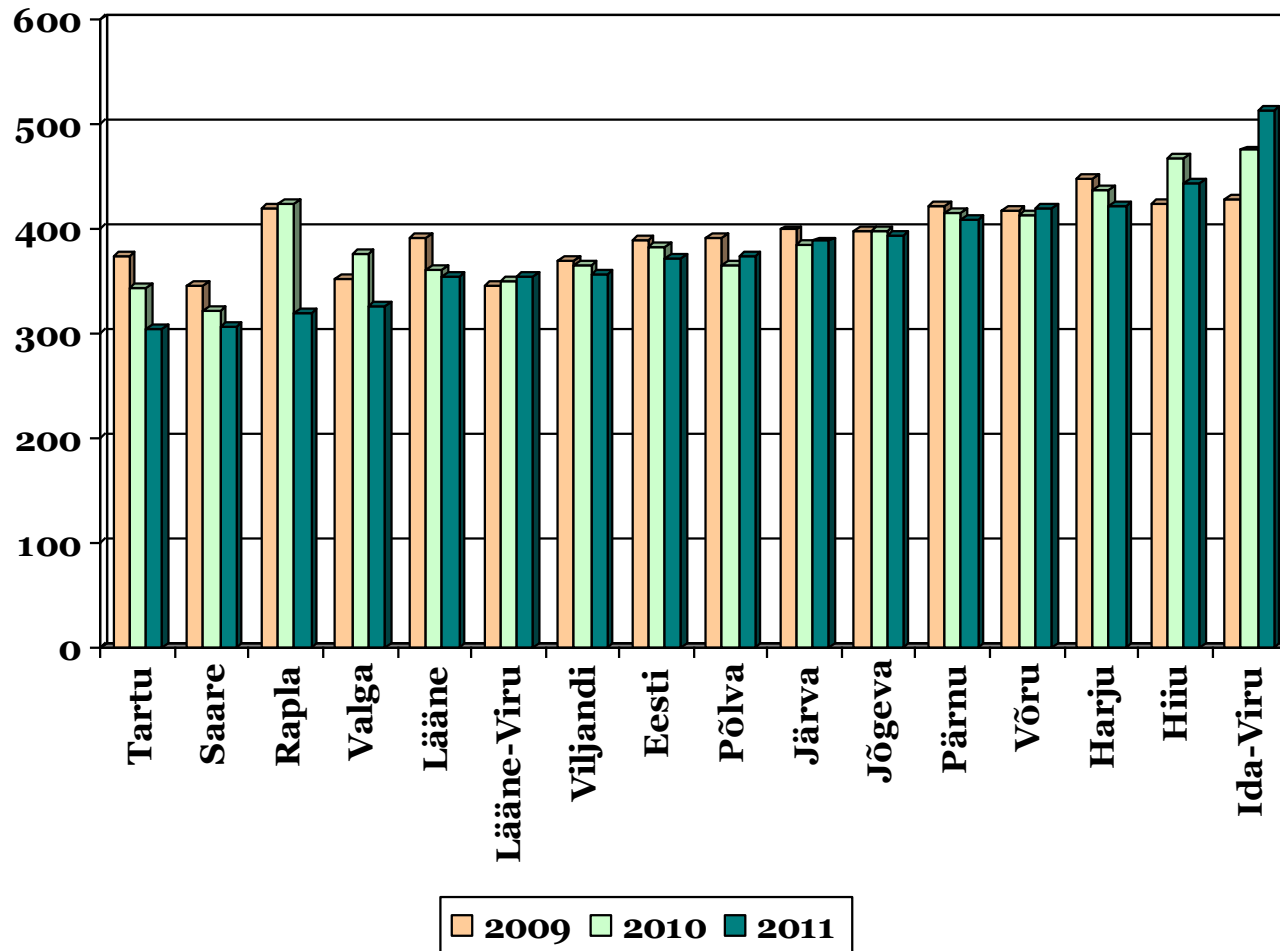
Piimatoodang 2009-2011



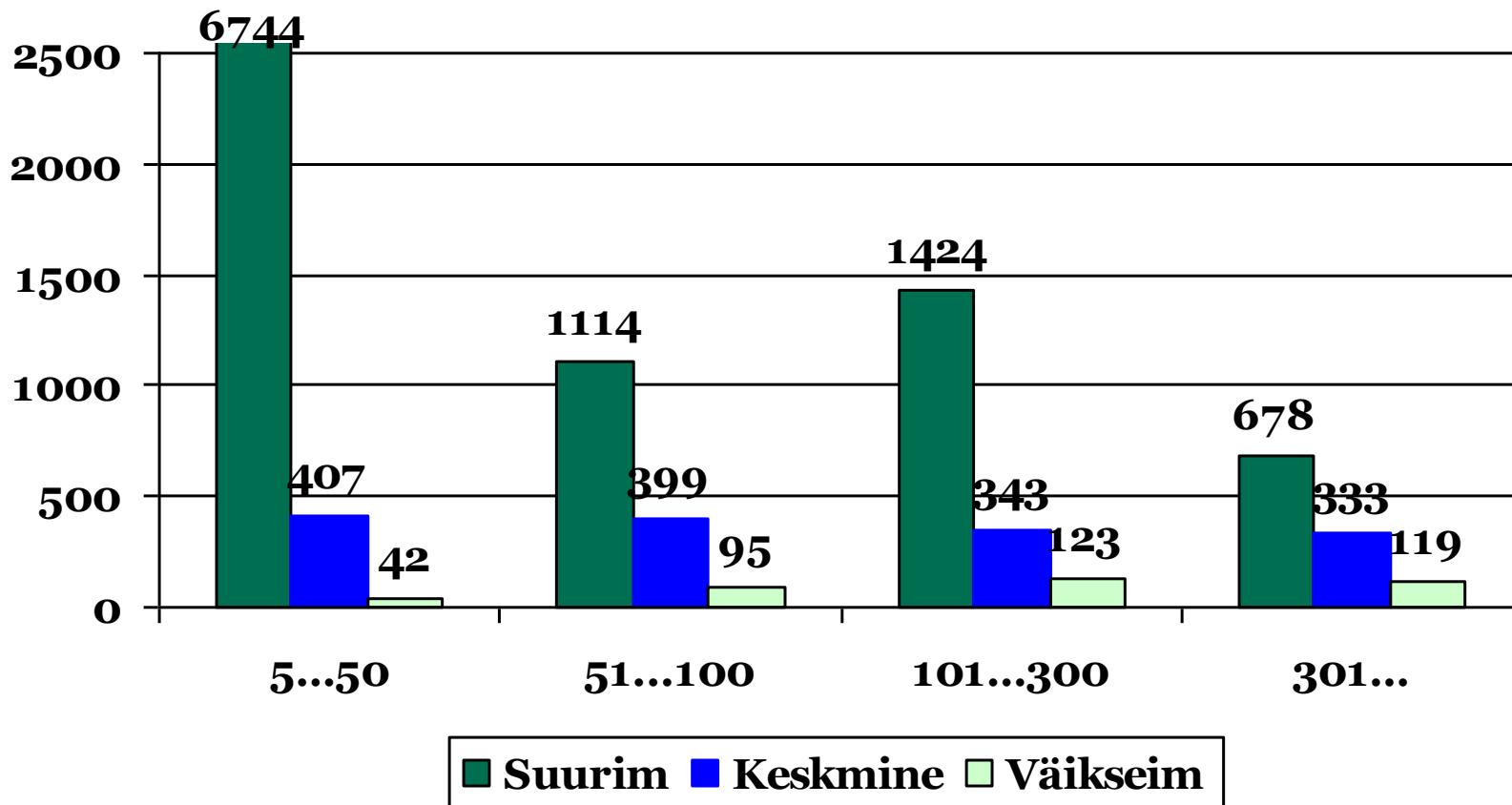
Keskmine SRA piimas (tuh/ml)



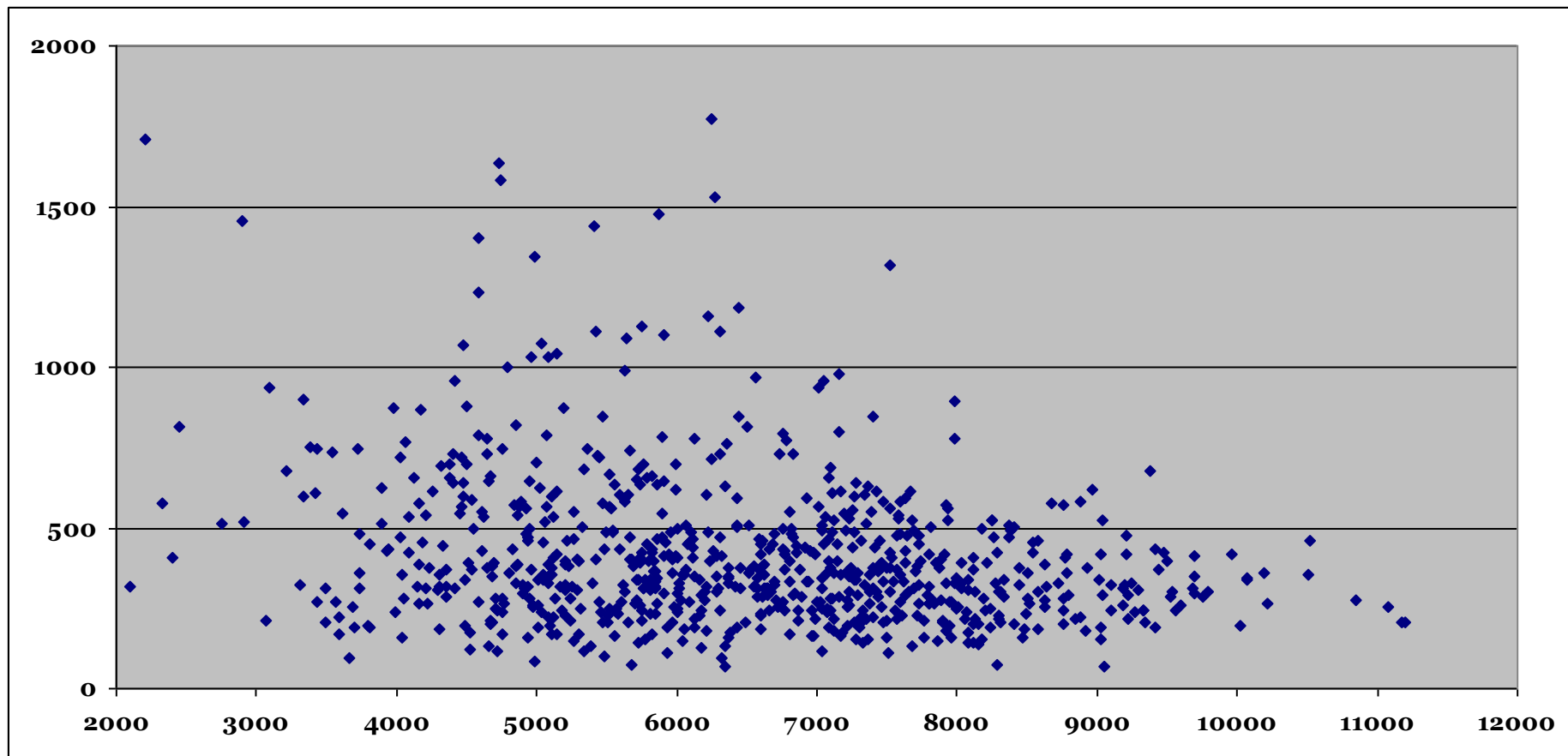
Keskmine SRA maakondades



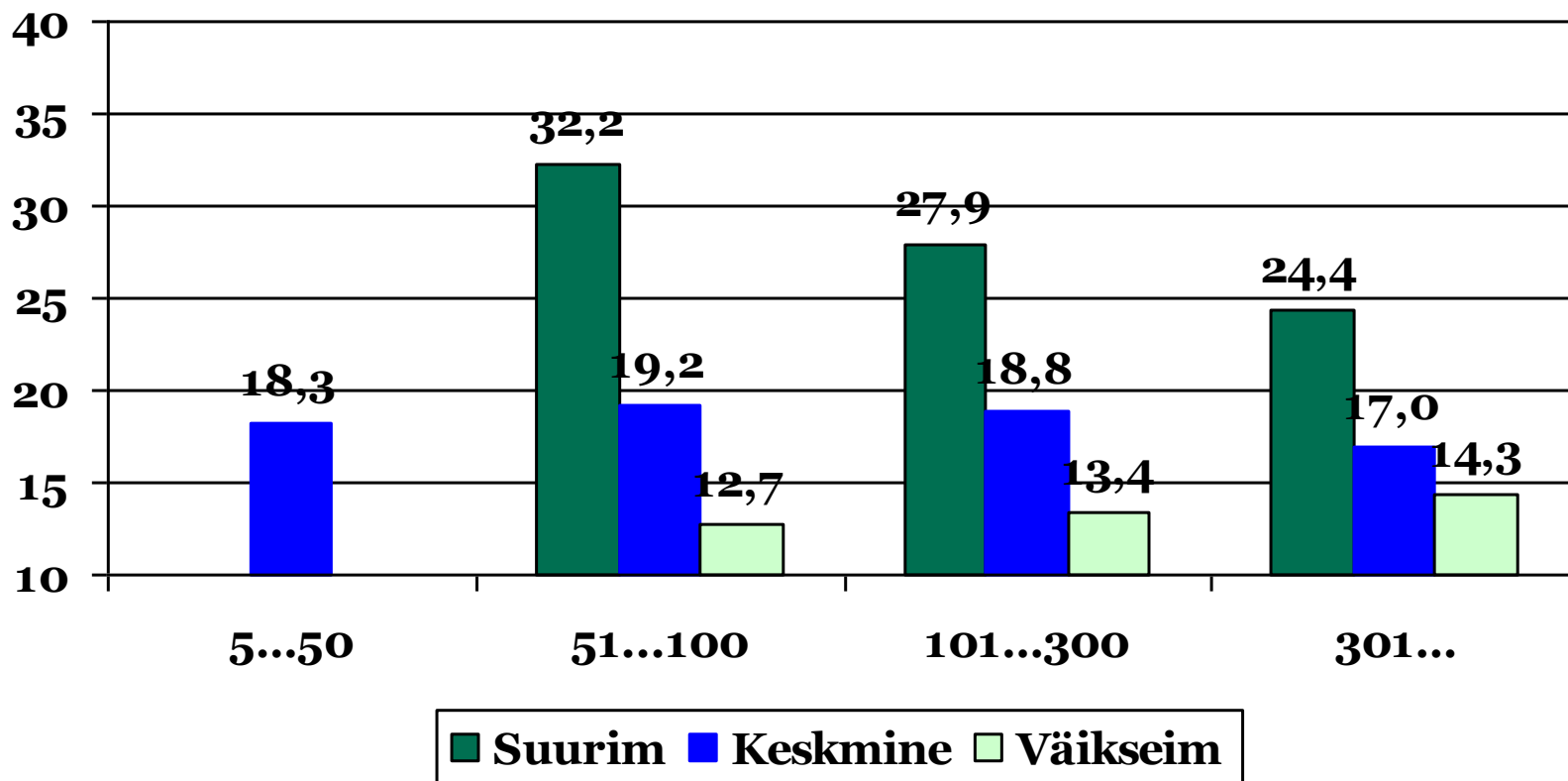
Keskmine SRA (tuh/ml) karjades 2011. a detsembri kontroll-lüpsil



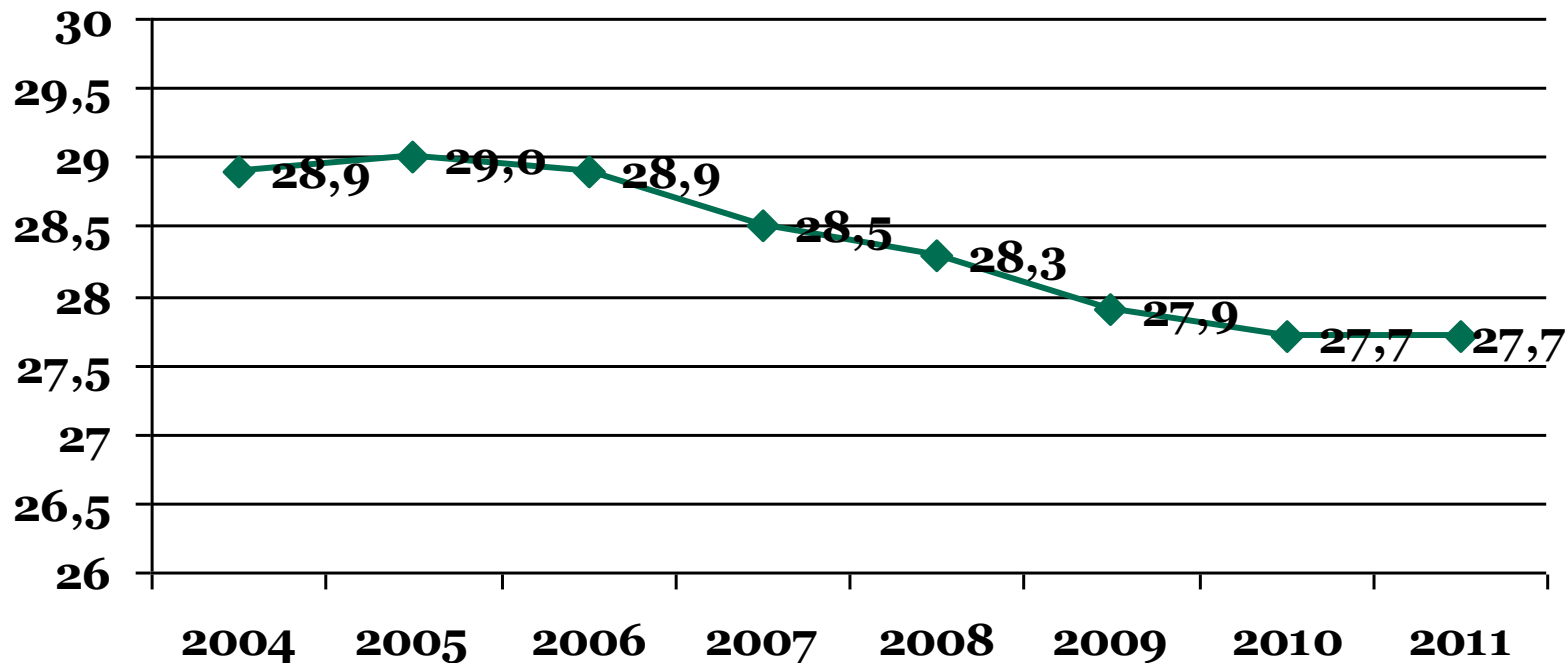
Karjade jaotus 2011. a piimatoodangu ja SRA järgi



Lehmikute vanus esimesel seemendusel

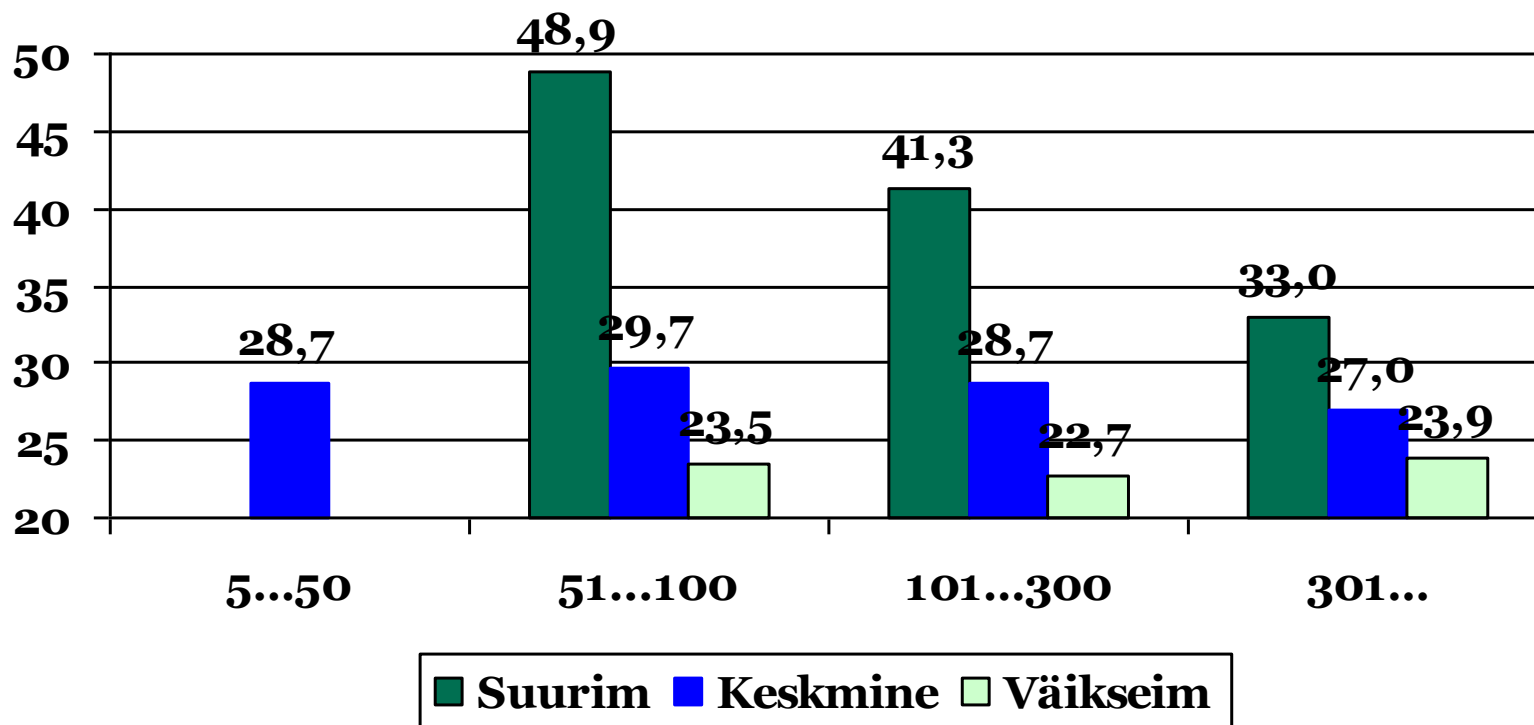


Esmaspoeegimisiga

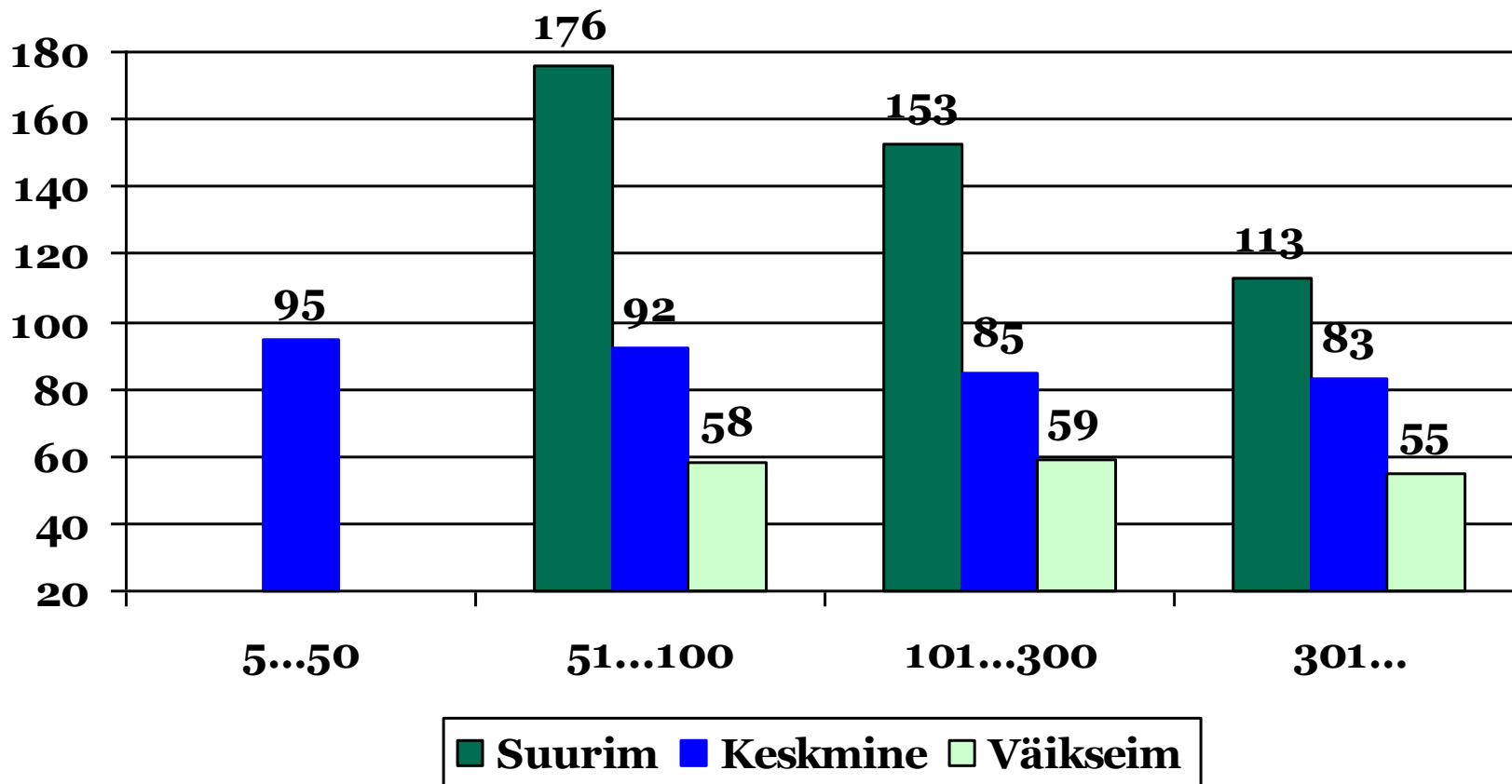


Soovituslik: 22-24 k (A. Brand et al: Herd Health and Production Management in Dairy Practice, 2001)

Esmaspoegimisiga erineva suurusega karjades



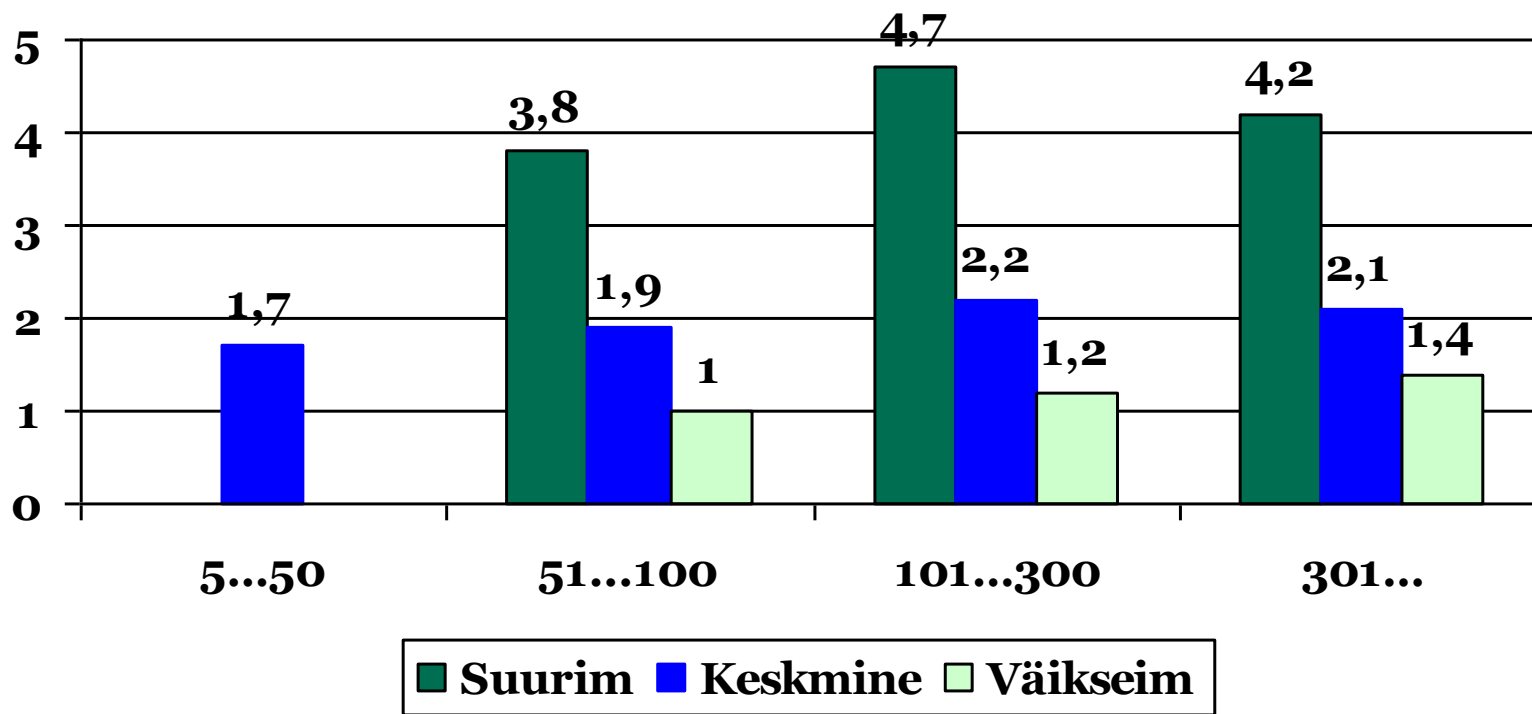
Päevi poegimisest esimese seemenduseni



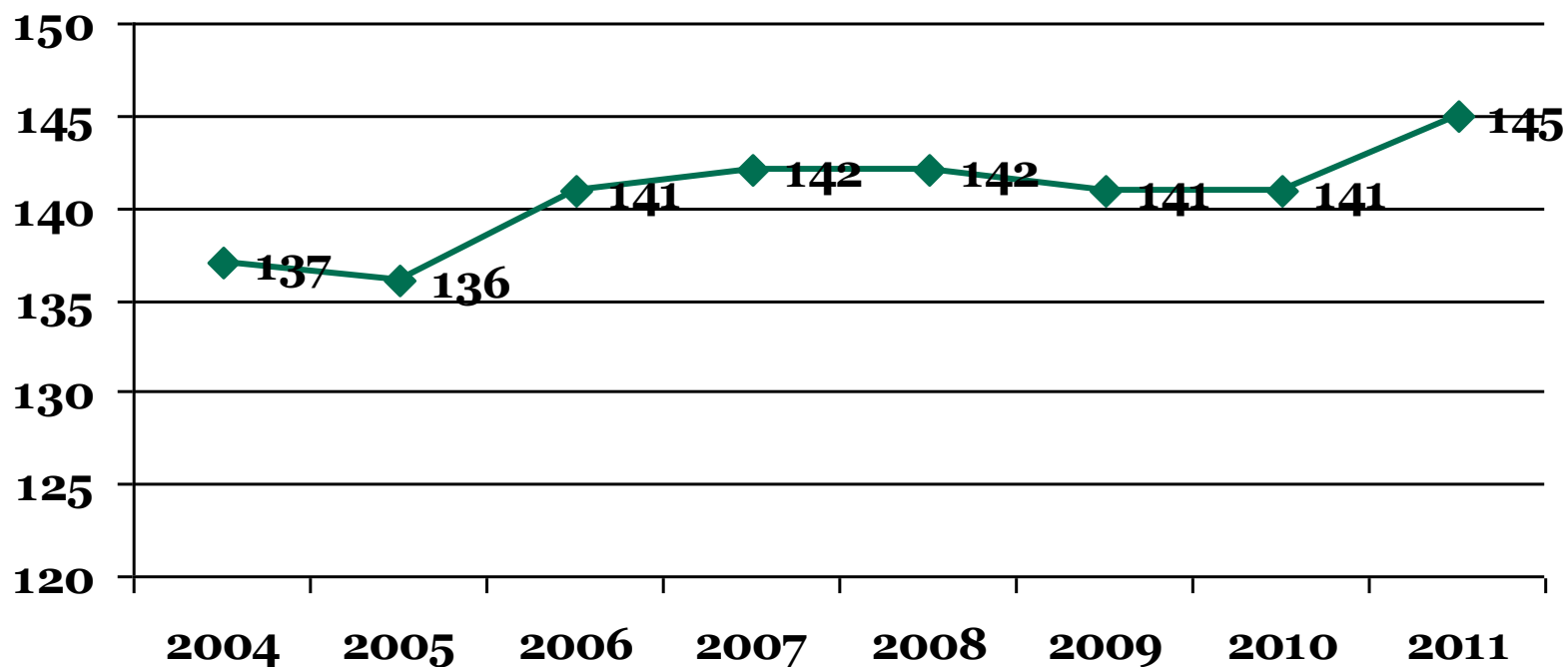
..... Soovituslik: 60...70 päeva (Samarütel, 2006), 50...75 päeva (Veepro)



Seemendusi tiinestumise kohta



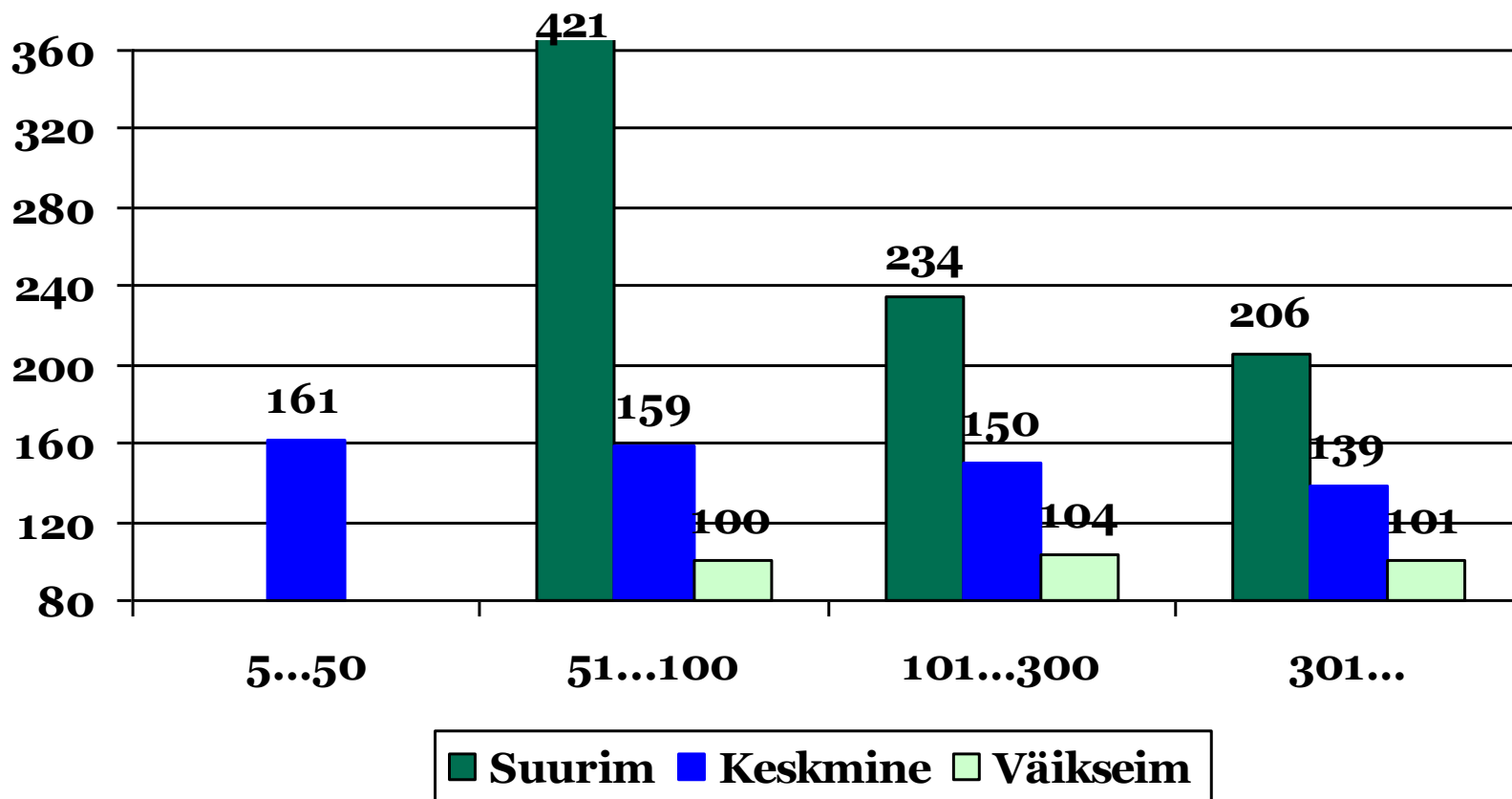
Uuslüksiperioodi pikkus



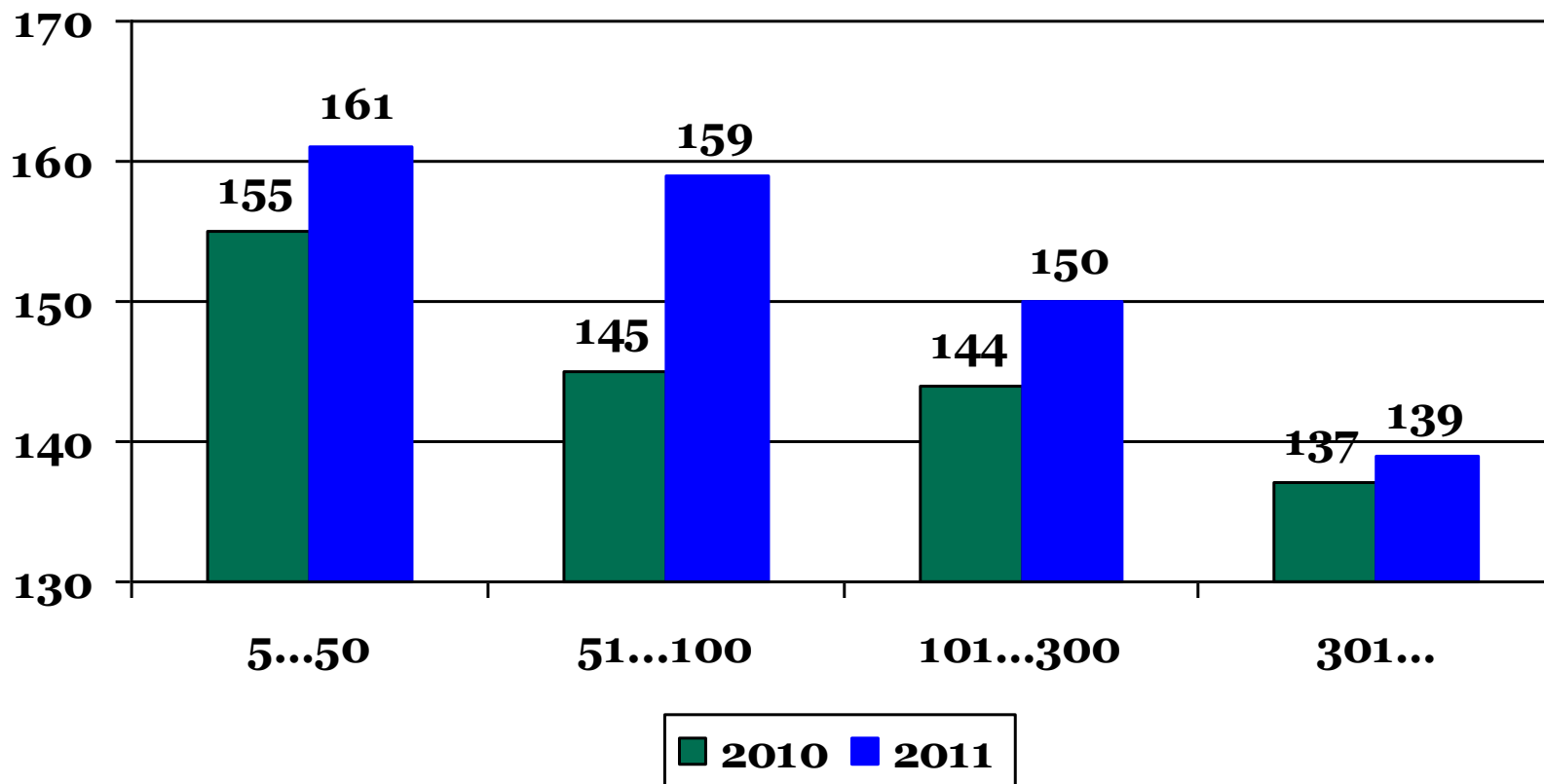
Soovituslik 85...110 (Samarütel), 85...125 päeva (Brand jt)



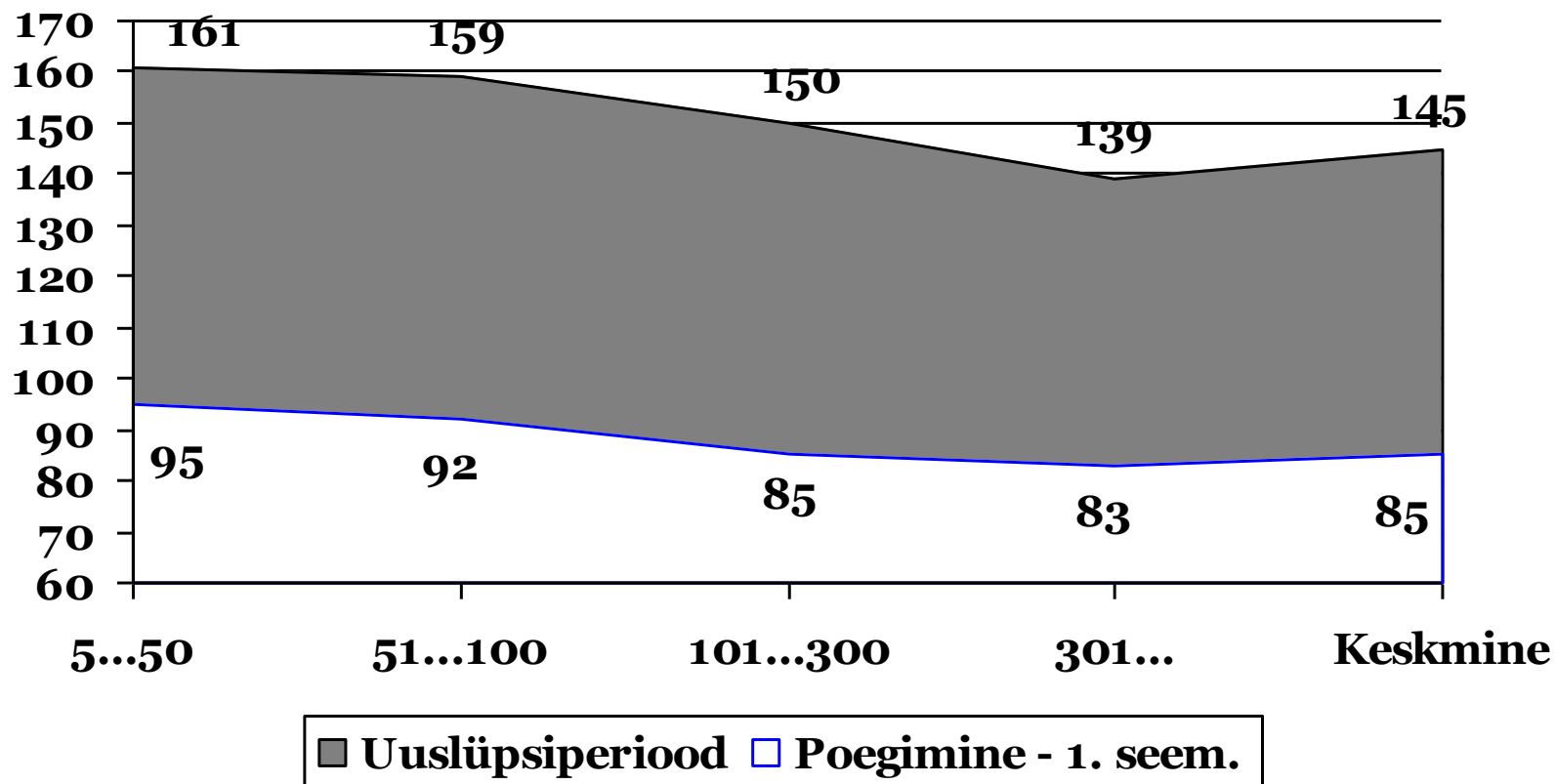
Uuslüpsiperiood erineva suurusega karjades



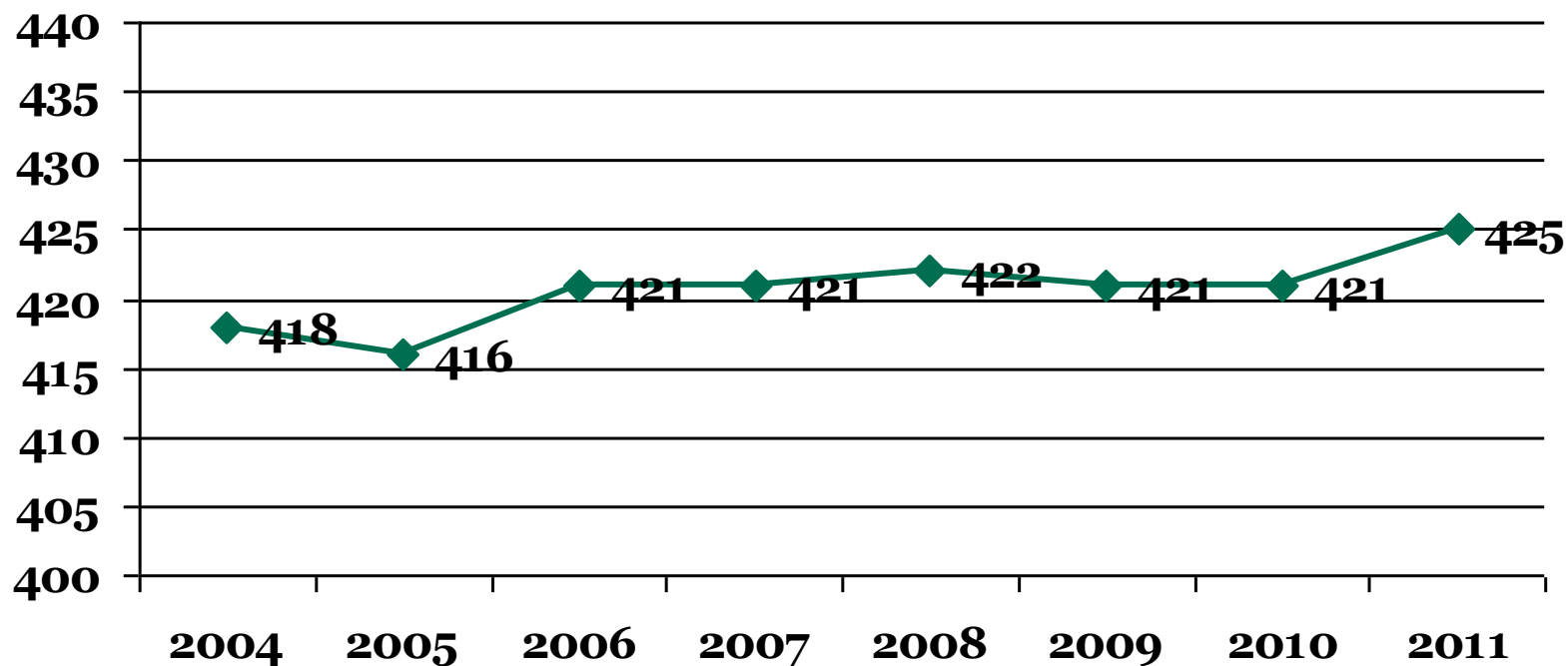
Uuslüksiperiood 2010 ja 2011



Päevi esimesest seemendusest tiinestumiseni



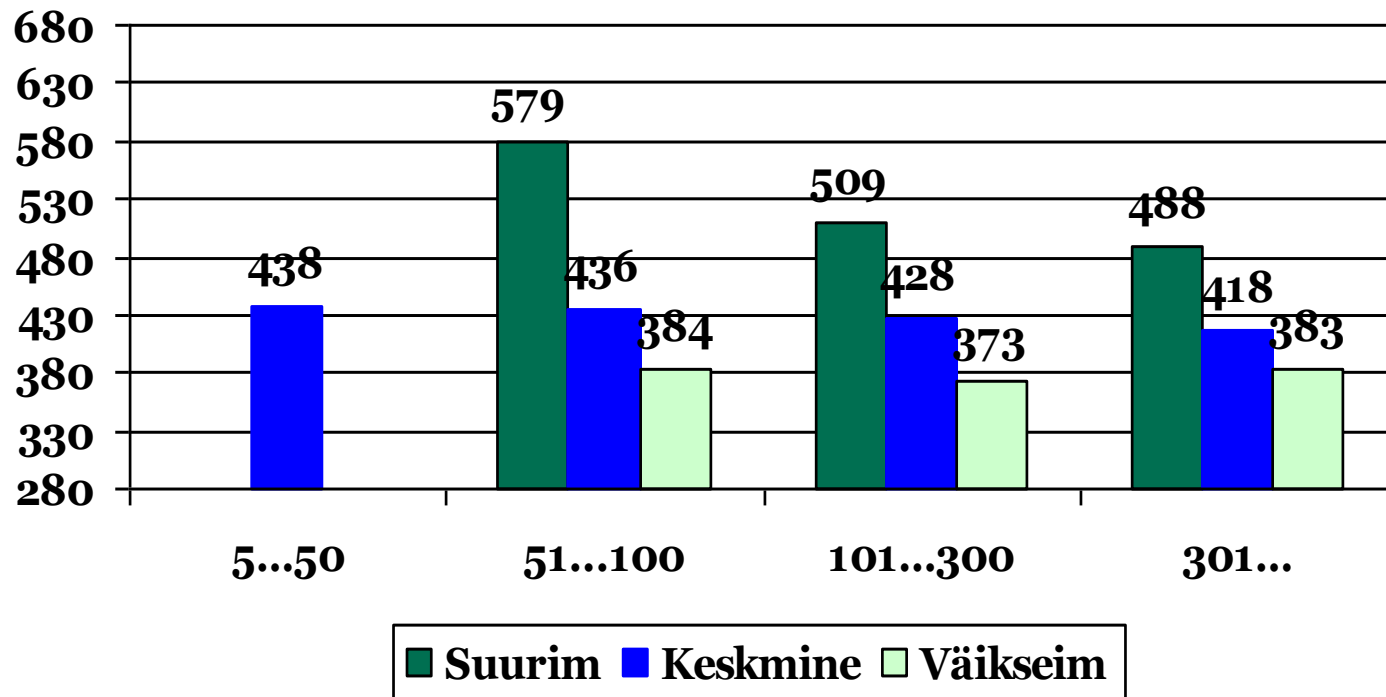
Poegimisvahemiku pikkus



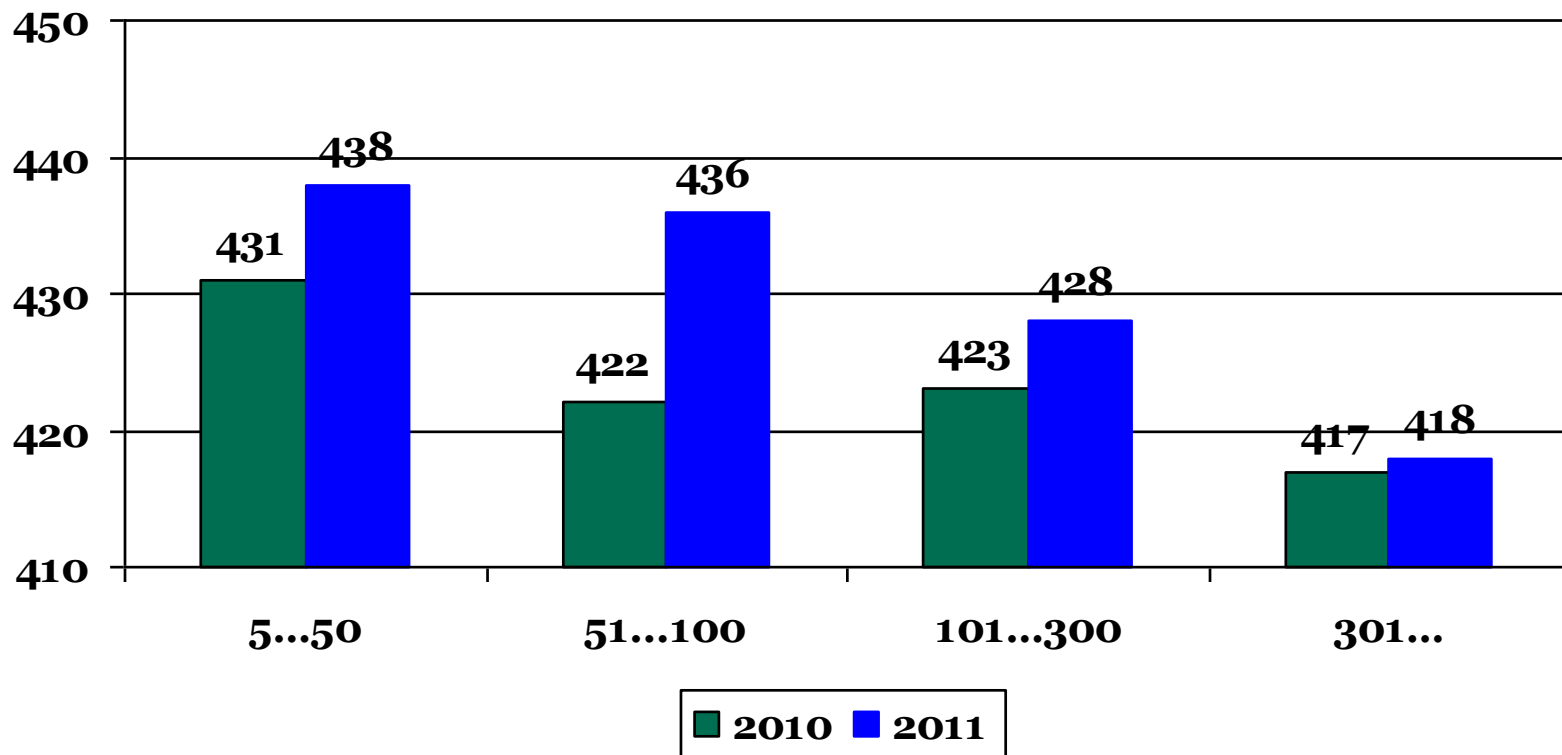
Soovituslik: 365 p (Veepro), <395 (Brand jt)



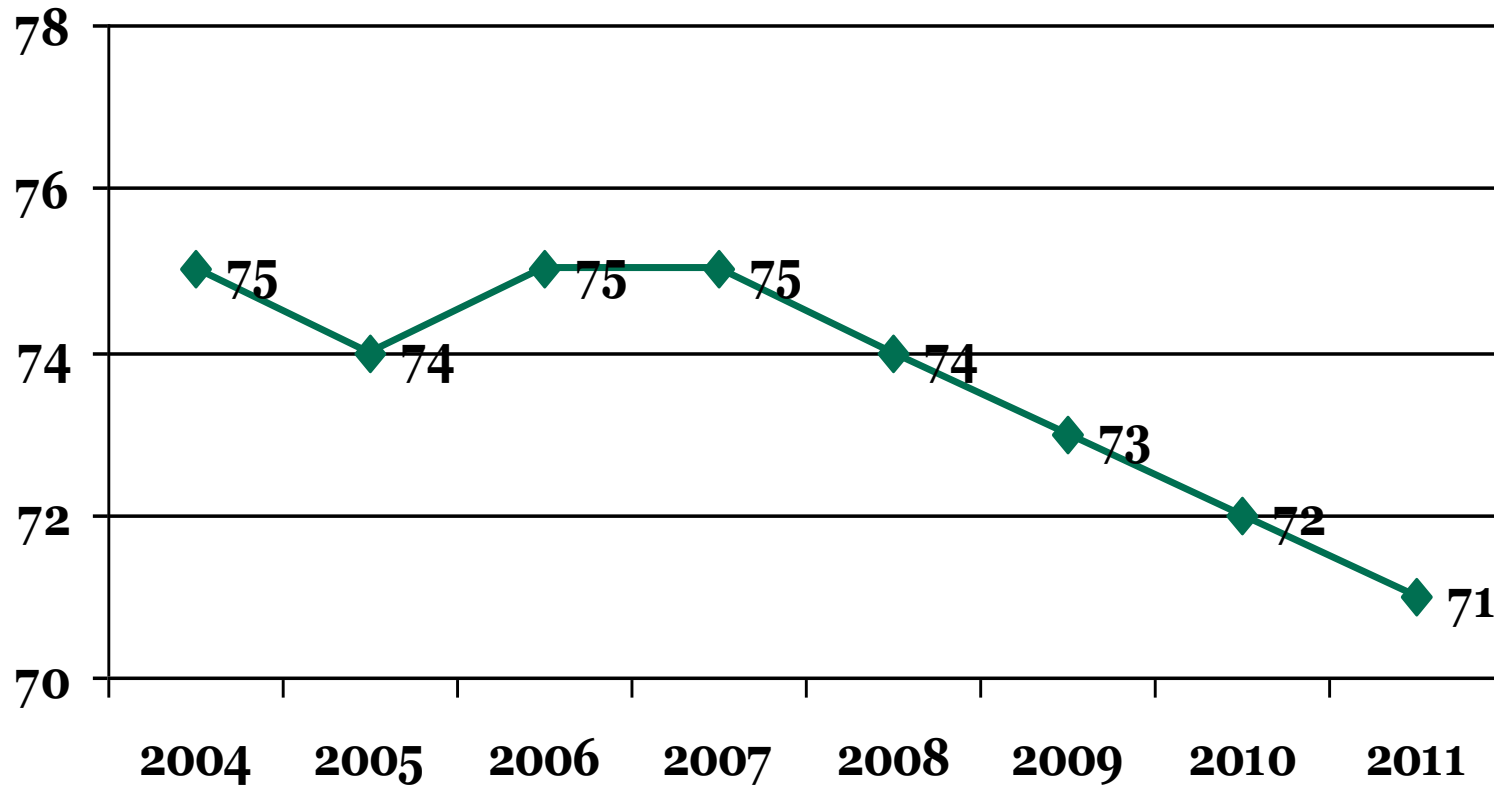
Poegimisvahemik erineva suurusega karjades



Poegimisvahemik 2010 ja 2011



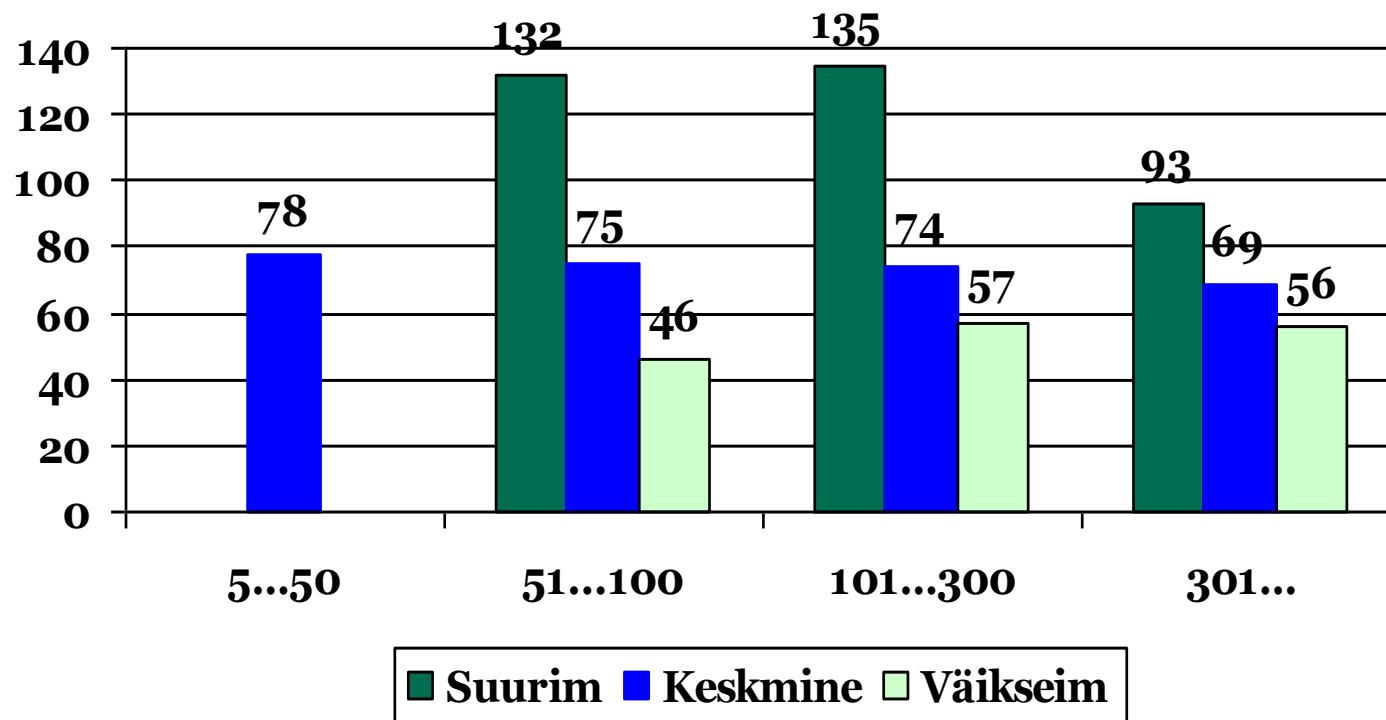
Kinnisperioodi pikkus



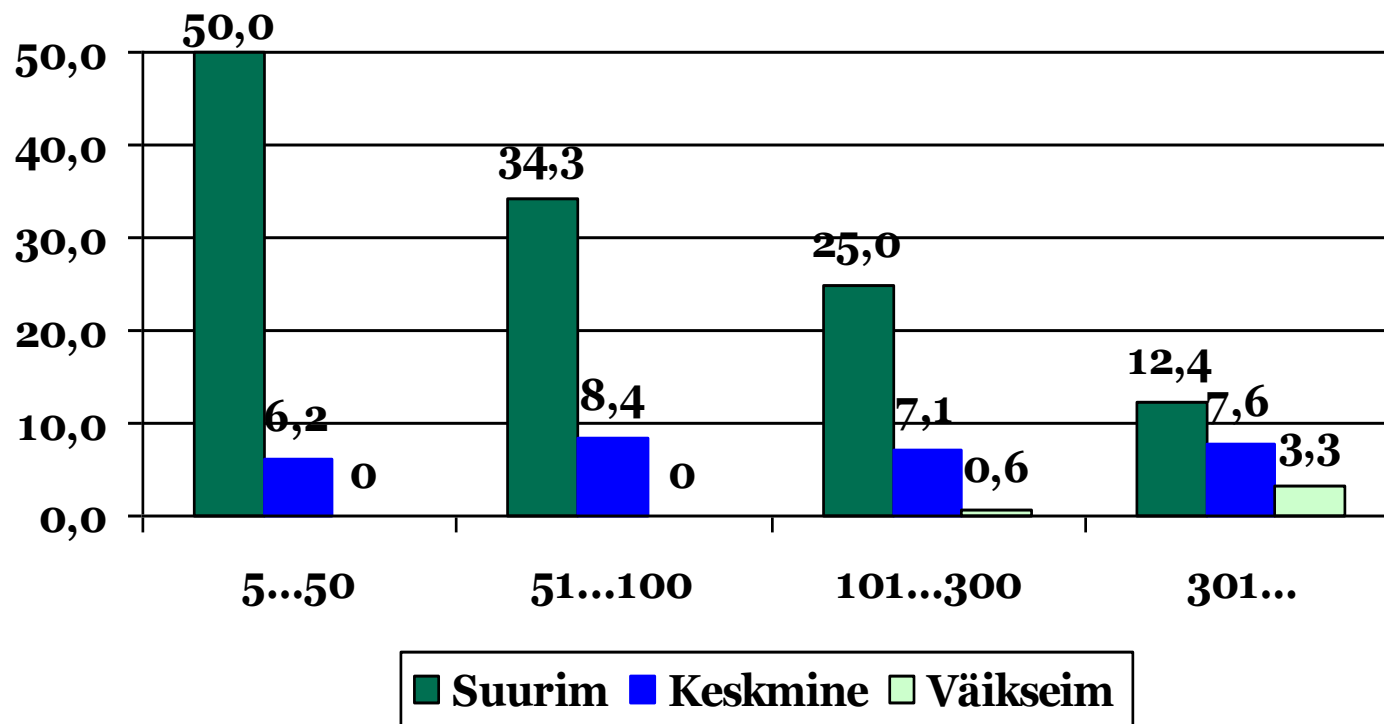
Soovituslik 50-70 päeva (Brand jt).



Kinnisperiood erineva suurusega karjades

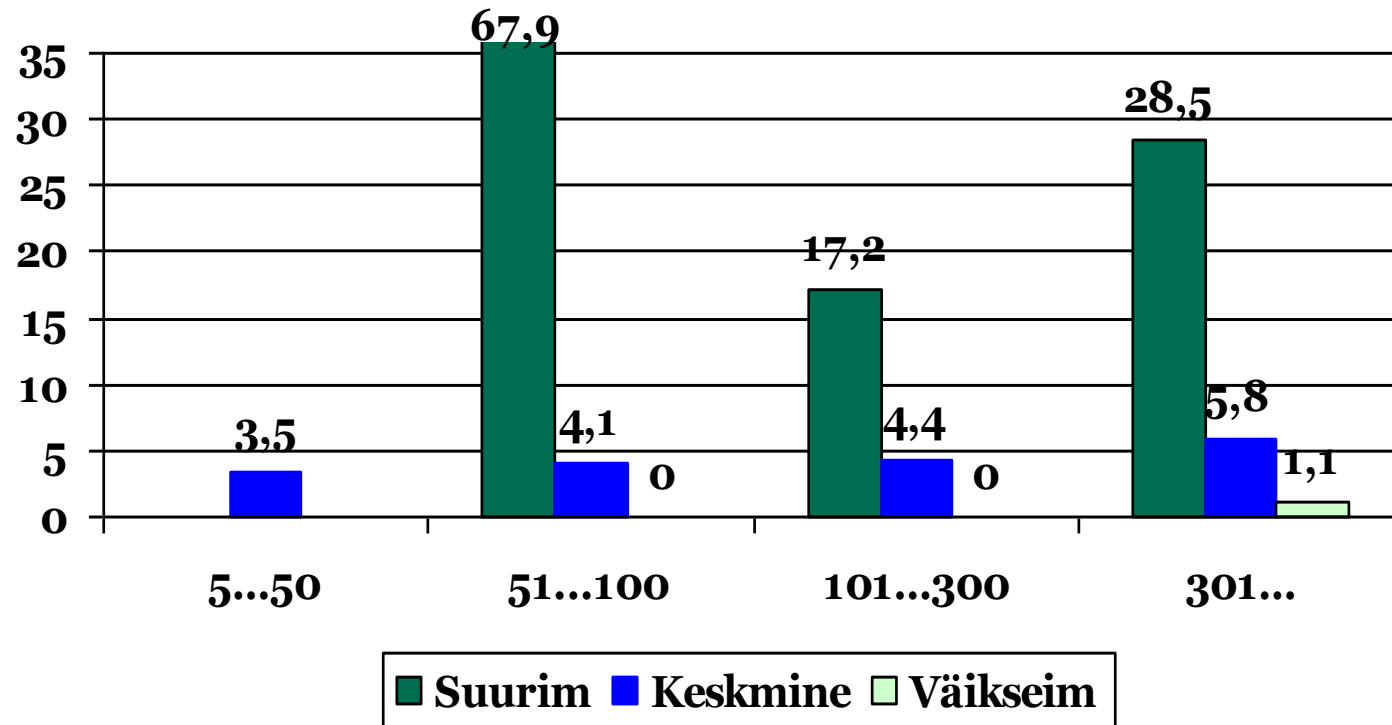


Surnultsünde erineva suurusega karjades (%)

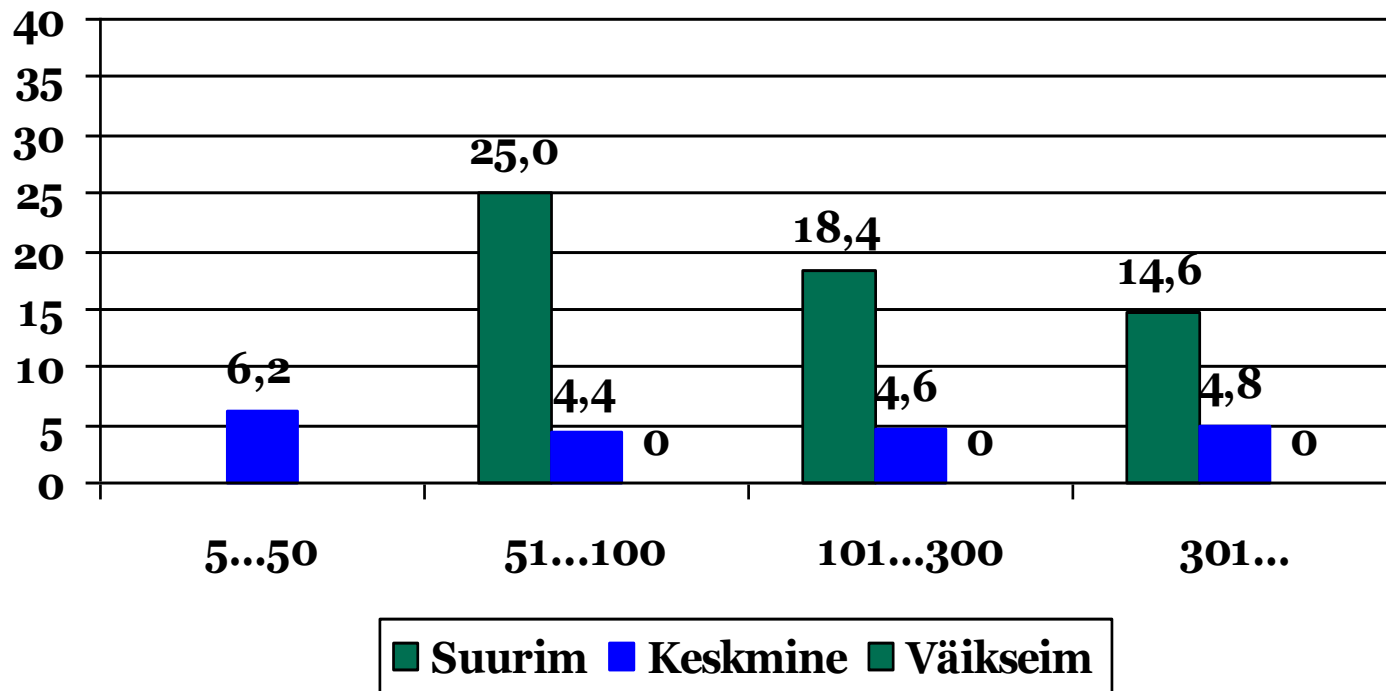


Soovituslik: <5%

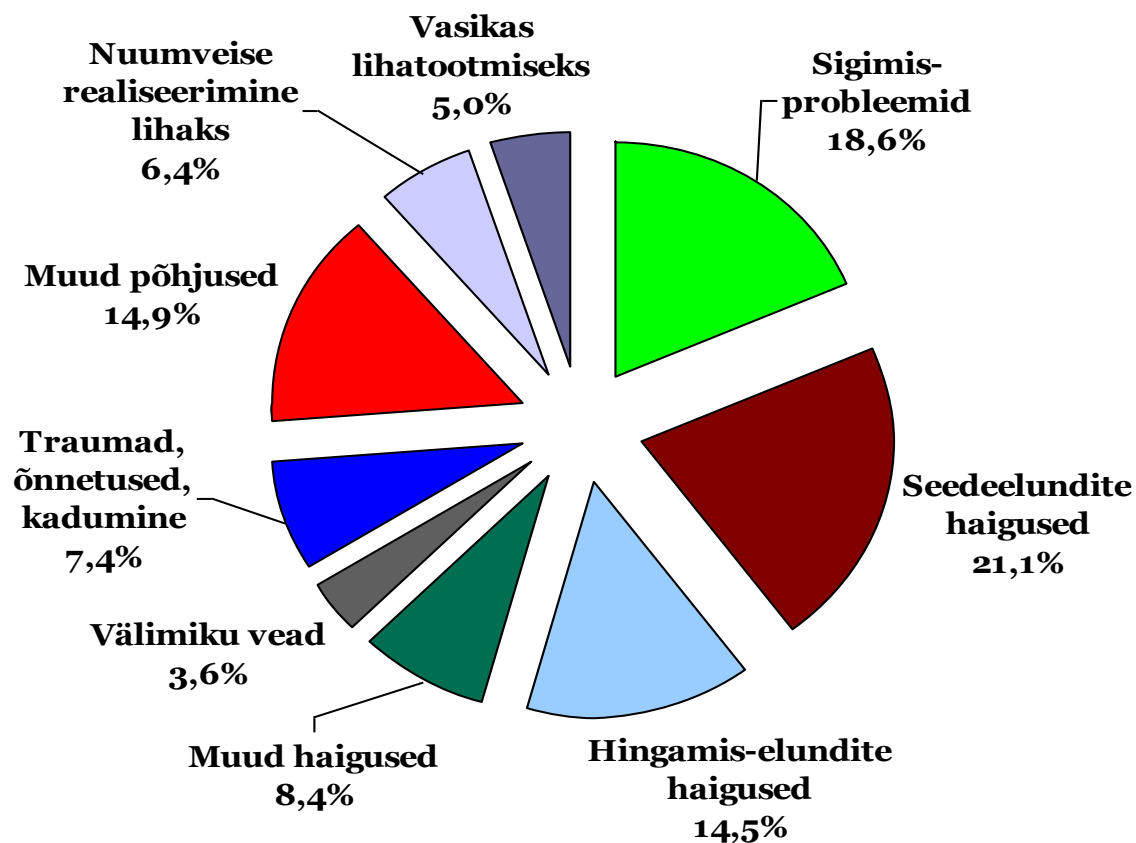
Lehmikute karjast väljaminek (... 6 k)



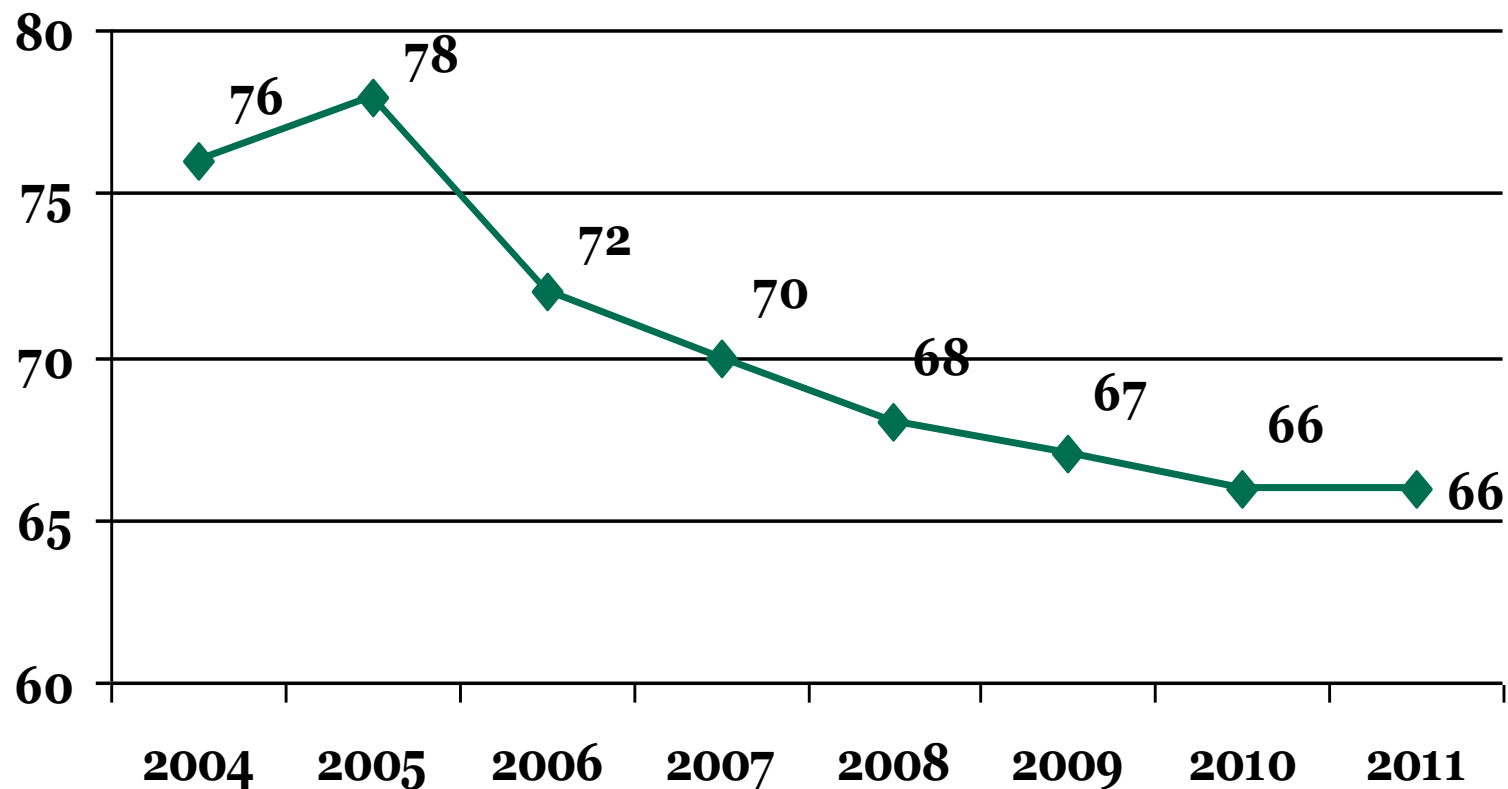
Lehmikute karjast väljaminek (6 k -...)



Lehmikute karjast väljamineku põhjused

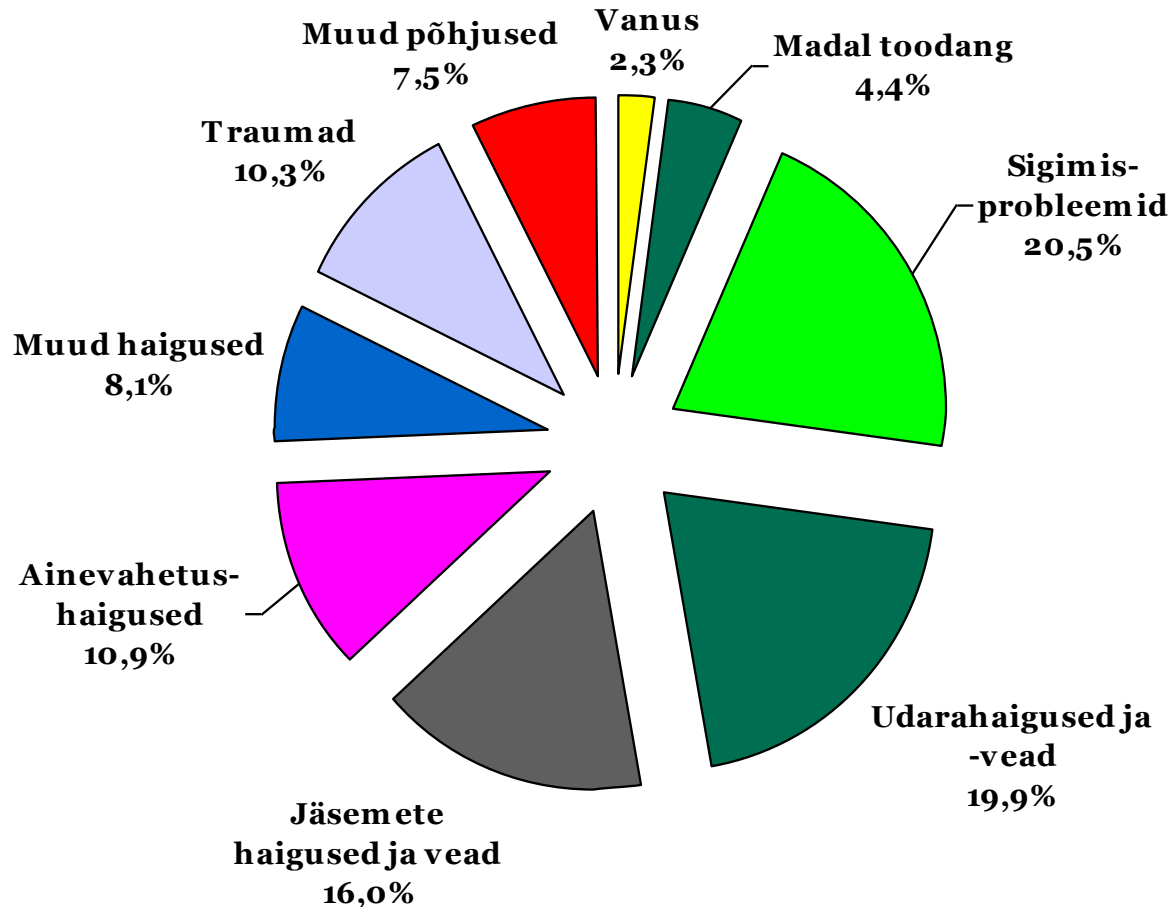


Lehmade vanus väljaminekul (k)



**Lehm hakkab n.ö kasumit tootma 2. laktatsiooni teisest poolest (Janowitz, 2008)*

Lehmade karjast väljamineku põhjused



Edukat piimatootmisaastat!

www.jkkeskus.ee

Kreutzwaldi 48A
Tartu 50094, Estonia

Tel (+372) 738 7700

